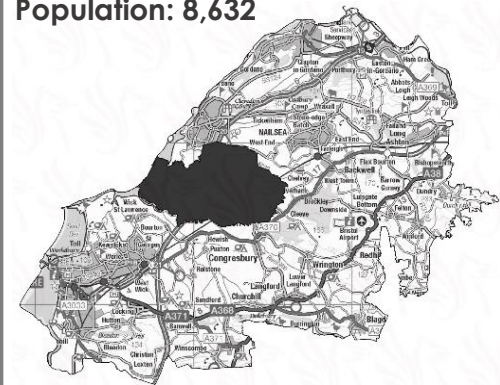


Business Intelligence

North Somerset ward profile: Yatton

Overview

Population: 8,632

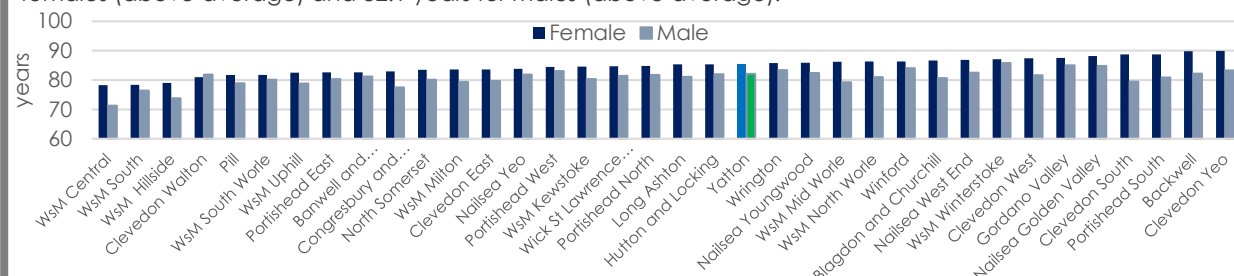


Key messages

- Yatton ward has an overall deprivation ranking of 74.4%. However, at lower geographies (LSOAs) there are some differences.
- Estimated child poverty is lower in Yatton than the North Somerset average both before and after housing costs, but is higher when compared to other wards in the northern part of the district.
- Average house prices are significantly above the national average and nine times the median constituency annual wage, but this too differs by LSOA.
- Unemployment is low in Yatton and across North Somerset but a significant percentage of residents out commute for their work.
- People's health is generally good in Yatton but some social care interventions for adults and children are similar to the North Somerset average.
- Children's attainment is good but children in Yatton schools are about average for claiming free school meals.
- ASB incidents and crimes are below the North Somerset rate.

Health and Wellbeing

Life expectancy in North Somerset is 83.5 years for females and 80.1 years for males. In Yatton it is 85.5 years for females (above average) and 82.1 years for males (above average).



The % of people in Yatton who say that they have good health (84.0%) is above the North Somerset average of 81.0%.

Data based on pre-2015 ward boundaries.

Prosperity and Opportunity

Deprivation

The Indices of Multiple Deprivation provides a relative ranking of areas across England according to their levels of deprivation (not affluence). These indicators are organised into 7 domains of deprivation. The most deprived areas have a percentile near 0% and the least deprived areas have a percentile near 100%. North Somerset wards varied between an overall deprivation percentage ranking of 1.3% in Weston-super-Mare South ward (the worst) and a ranking of 97.1% in Nailsea Golden Valley and Nailsea Youngwood (the best).

Yatton ward ranked at 74.4% for overall deprivation. When looked at by the smaller geographical areas (Local Super Output areas) that make up the ward and also the various domains, there is some variation.

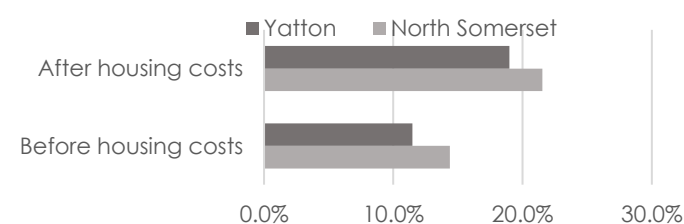
Domains of deprivation % rankings for Yatton wards and LSOAs

	Yatton ward	Kingston Seymour LSOA	Mendip Road LSOA	Claverham LSOA	North Yatton Cleeve	Yatton Station LSOA	Stowey Road LSOA
Overall deprivation	74.4%	64.9%	61.8%	96.8%	63.7%	86.7%	84.7%
Income deprivation	62.3%	82.1%	43.3%	92.6%	58.3%	66.6%	70.3%
Employment/skills deprivation	57.0%	71.3%	46.1%	94.2%	56.8%	66.0%	59.2%
Education deprivation	60.6%	65.8%	37.3%	86.4%	53.6%	82.7%	62.9%
Health/disability deprivation	62.8%	71.9%	59.8%	83.4%	62.4%	69.7%	83.9%
Crime deprivation	78.4%	90.7%	84.8%	83.6%	66.8%	84.2%	81.3%
Barriers to housing / services deprivation	66.8%	9.9%	96.2%	61.3%	35.6%	88.9%	95.8%
Living environment deprivation	72.6%	30.3%	90.1%	87.0%	68.5%	94.2%	92.2%

Children

20.9% of Yatton residents are under the age of 18 years. This compares to 20.1% in North Somerset overall. Population projections are not available at ward level, but for North Somerset overall, the 0-19 years population is projected to increase by almost 12% by 2040 (47,000 people to 52,700 people).

Estimated child poverty data is only available for pre-2015 ward boundaries but this data shows that Yatton has a lower level of child poverty than in North Somerset overall (11.5% compared to 14.4% before housing costs and 19.0% compared to 21.5% after housing costs). However, compared to other areas in the north of the district Yatton has one of the highest levels of child poverty.



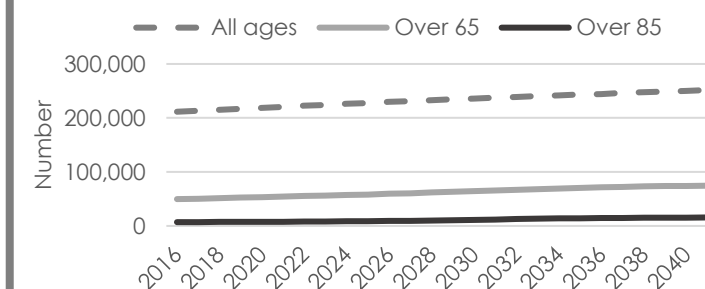
The percentage of children and young people in Yatton who have experienced social care interventions is similar to the North Somerset average for some areas of support and safeguarding but is below average for others.

	Above/below average
Children in Need	Similar
Child Protection Plans	Similar
Looked After Children	Below
High Impact Families	Below

Older residents

23.3% of Yatton residents are over the age of 65 and 2.4% are over the age of 85. This compares to 23.5% over the age of 65 in North Somerset overall and 3.3% over the age of 85.

Population projections are not available at ward level, but for North Somerset overall the over 65 population is projected to increase by over 50% by 2040 (49,000 people to 74,500 people). The over 85 population is predicted to more than double from 7,000 to 15,000.

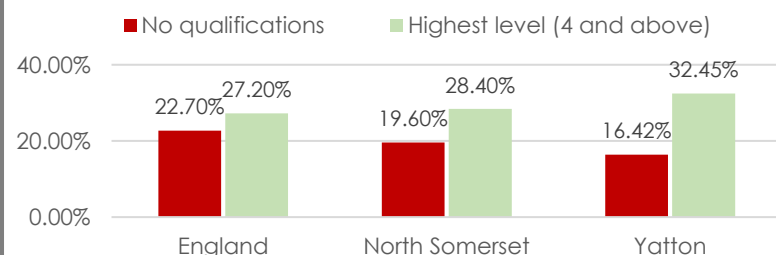


The percentage of older people in Yatton (+65 years) who receive adult social care services in community, and who are receiving support via residential and nursing care is similar to the North Somerset average.

	Above/below average
Community care	Similar
Residential care	Similar
Nursing care	Similar

Qualifications

Data is only available for pre-2015 ward boundaries but at that point Yatton area had a higher percentage of residents with level 4 qualifications and a slightly lower percentage with no qualifications compared to the North Somerset average. There are differences within the area for these measures.

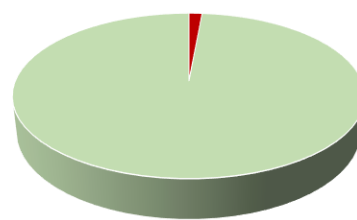


Job types

The percentage of people working in higher managerial and professional/technical occupations is higher than the national and the North Somerset average in Yatton (pre-2015 ward boundary data).

Unemployment

Around 1% of Yatton residents are unemployed but actively seeking work (claimant count). This is below the North Somerset average of 2%.



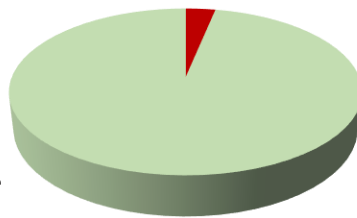
Attainment

Educational attainment for children living in Yatton is below the North Somerset average for Key Stage 1 but above for Key Stage 2 (% meeting the expected standard in reading, writing and maths), and for Key Stage 4 (Attainment 8).

	KS1	KS2	KS4
Yatton	Below	Above	Above
North Somerset average	66.3%	64.1%	46.5

Post-16

2.6% of young people (aged 16 and 17) were not in training, employment or education in Yatton. This is slightly below the North Somerset average of 3%. It should be noted that the cohort size is very small.



Quality Places

Crime

Latest police data shows a lower rate of ASB incidents and crimes per 1,000 people in Yatton compared to North Somerset overall.

	North Somerset	Yatton
ASB rate per 1,000 2018/19	17	10
Crime rate per 1,000 2018/19	63	37
Crime and ASB rate per 1,000 2018/19	80	48

Housing

The average property price in North Somerset (all types of dwellings) was £319k in late 2018. This compares to £322k in Clevedon, £354k in Portishead and £204k in Weston-super-Mare. The average in Yatton was £301k however there are differences by LSOA with Kingston Seymour averaging £259k and Claverham averaging £384k. Property prices in North Somerset have increased by 36% in the past decade, in Yatton the increase was 35%.

9.2% of households in North Somerset live in social housing. This is slightly lower in Yatton.

