



North Somerset Pharmaceutical Needs Assessment 2022-25

Table of Contents

1	Executive Summary	4
2	Introduction	5
2.1	Developing the pharmaceutical needs assessment	5
2.2	Localities used for analysis	6
2.3	Pharmaceutical providers.....	8
2.4	The scope of this PNA: Pharmaceutical services.....	10
2.5	Essential services	11
2.6	Advanced services commissioned by NHS England.....	12
2.6.1	Enhanced Services.....	14
2.6.2	Locally commissioned services	14
3	Overview of North Somerset.....	17
3.1	Population	17
3.1.1	Ethnicity	18
3.1.2	Religion.....	20
3.1.3	Disability	20
3.1.4	Car ownership	20
3.2	Deprivation.....	20
3.3	Population growth	22
3.3.1	Growth in older population age groups	23
3.3.2	Housing developments	24
3.3.3	Progress to date	26
3.4	Health and Wellbeing in North Somerset	26
4	Current pharmacy provision and dispensing activity in North Somerset ..	29
4.1	Considerations for North Somerset	31
4.1.1	Impacts of tourism	32
4.1.2	Bristol Airport	33
4.2	Pharmacy provision by locality area.....	33
5	Locality profiles	38
5.1	Clevedon, Nailsea and Portishead Locality	38

5.1.1	Access to essential services.....	40
5.1.2	Opening hours.....	41
5.1.3	Access to advanced and enhanced services.....	41
5.2	Rural Locality.....	43
5.2.1	Access to essential services.....	45
5.2.2	Opening hours.....	45
5.2.3	Access to advanced and enhanced services.....	46
5.3	Weston and Worle Locality.....	48
5.3.1	Access to essential services.....	50
5.3.2	Opening hours.....	51
5.3.3	Access to advanced and enhanced services.....	52
6	Public engagement in pharmaceutical needs assessments.....	54
6.1	Results of the public consultation.....	55
7	Conclusion.....	56
7.1	Necessary services: statement of any gaps in current provision.....	56
7.2	Necessary services: statement of any gaps in future provision.....	56
7.3	Improvements and better access: statement of any gaps in provision.....	56
8	Table of Figures.....	57
	Appendix I: Locality health needs.....	59
	Appendix II: Travel time maps.....	61
	Appendix III: Pharmacy details.....	65
	Opening hours.....	65
	Advanced and enhanced services.....	68
	Appendix IV: Locally commissioned services.....	70
	Locally commissioned services by BNSSG CCG.....	70
	Locally commissioned services by North Somerset Council.....	71
	Appendix V: North Somerset PNA Steering Group.....	74
	Membership.....	74
	Terms of reference.....	74

1 Executive Summary

The assessment of the need for pharmaceutical services forms part of the role of the People and Communities Board in North Somerset as per the requirements of the Health and Social Care Act (2012).

The previous Pharmaceutical Needs Assessment (PNA) 2018-2021 concluded that pharmaceutical service provision was meeting need in North Somerset and there were no current gaps in provision. A new pharmacy opened in Haywood Village in Weston-super-Mare in 2020, addressing a previously identified need in the largest housing development in the area. Three pharmacies closed in Worle, Portishead and Nailsea.

This needs assessment focuses on services provided by the 40 existing community pharmacies and two dispensing GP practices in North Somerset.

Three localities have been used for this PNA in North Somerset comprising the populations in Clevedon, Portishead and Nailsea, the Rural areas and Weston and Worle.

Access to services has been assessed based on distance and travel time analysis for walking, car use and public transport.

Analysis for the whole of North Somerset shows that 84.4% of the population are within 1.6km (1 mile) or 20-minute walk of a community pharmacy. Almost the entire population (99.2%) is within a 10 minute average peak drive time of a pharmacy. 90.3% percent of the population is within a 5 minute average peak drive time to a pharmacy.

More than three quarters of the population are within a ten minute journey by public transport of a pharmacy, with 98.5% of the population within a 30 minute public transport journey time.

Access was similar when analysed by the three localities, with all having good drive time and public transport access times. There is generally good pharmacy coverage after 5pm and at weekends, but with some scope for improvements, particularly in rural areas.

2 Introduction

The Health and Social Care Act (2012) transferred the responsibility to develop and update pharmaceutical needs assessments (PNAs) to Health & Wellbeing Boards from April 2013.¹

This document assesses the need for pharmaceutical services in North Somerset. Any changes to needs after the publication date (1st October 2022) will be reviewed quarterly by the North Somerset PNA steering group and supplementary statements will be published alongside this document on the North Somerset Council website.

The PNA is designed to assist NHS England, the Clinical Commissioning Group and the Local Authority in commissioning services from both existing and new potential providers through a systematic process of identifying needs and seeking to address them. It will also be used to inform the consideration of applications to join the pharmaceutical list. However, if a need is not identified in the PNA an application can still be made if the applicant can demonstrate granting it would result in significant benefits.

This needs assessment focuses on services provided by the 40 community pharmacies and two dispensing GP practices in North Somerset that exist as of the 1st March 2022.

2.1 Developing the pharmaceutical needs assessment

This PNA has been produced in accordance with the NHS (Pharmaceutical Services and Local Pharmaceutical Services) Regulations 2013 and follows the information provided by the Department of Health and Social Care to support Health and Wellbeing Boards implement their duty to produce the PNA.¹

A North Somerset steering group was formed to guide and review the PNA. A copy of the terms of reference for the steering group can be seen in Appendix V. The group

¹ [The National Health Service \(Pharmaceutical and Local Pharmaceutical Services\) Regulations 2013](#)

was chaired by a Consultant in Public Health and included broad representation from key stakeholders.

Local mapping of pharmacy locations and travel time analysis was produced with SHAPE (Strategic Health Asset Planning and Evaluation tool).

Information on pharmacy locations, opening times and essential/advanced services activity was provided by NHS England and NHS Improvement. The latest data was received on 1 June 2022 and was incorporated following the public consultation.

ONS mid-year population estimates for 2020 were used unless other sources are indicated. Due to a number of consolidations of GP practices in recent years, it was not possible to use health and disease information from GP practices for the PNA. This limits the analysis of health needs at a locality level.

Please note that the data for the 2021 census were not available yet and that some figures had to be used from the 2011 census which might not truly reflect the current population. Some data was only available at pre-2015 electoral ward level or Lower Super Output Area (LSOA), both of which are not coterminous with localities, therefore these rates may over or under represent the area.

2.2 Localities used for analysis

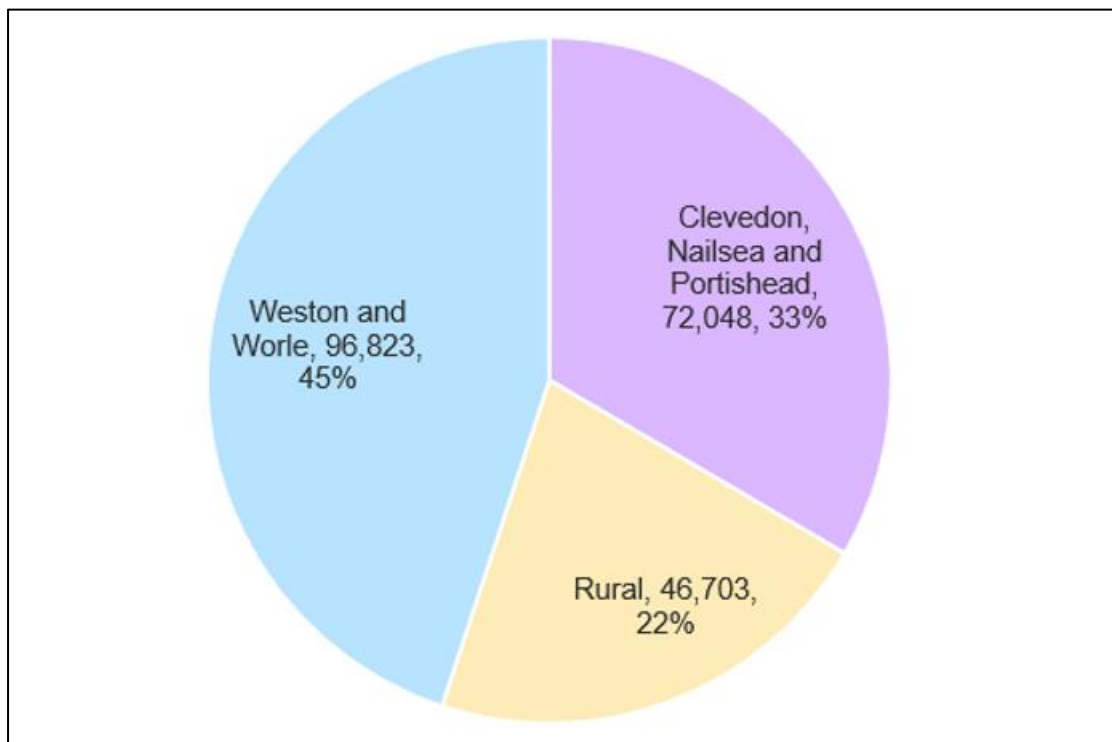
Three localities have been used for the PNA in North Somerset to best reflect the experience by users of pharmaceutical services. There is a distinct difference in experience in the rural areas compared to the towns in the northern part of North Somerset and the conurbation of Weston-super-Mare. Expectations around access to pharmacies will also vary in each of the localities.

PNA localities for North Somerset:

- Clevedon, Portishead and Nailsea
- Rural
- Weston-super-Mare and Worle (Weston and Worle)

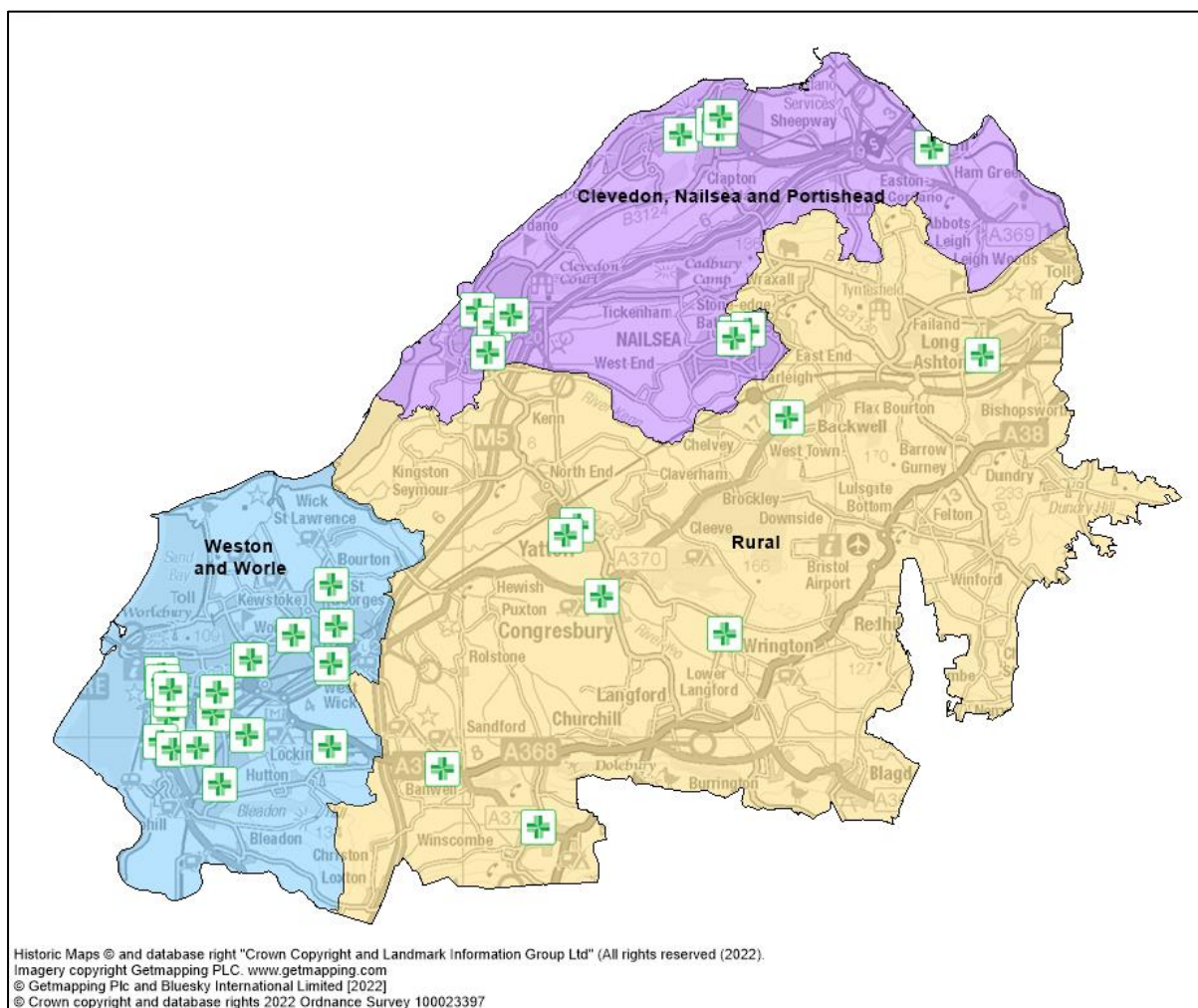
Figure 1: Resident population figures by locality area, North Somerset, 2020 shows that the rural locality contains the least residents and that all three towns of Clevedon, Nailsea and Portishead contain still fewer residents than Weston and Worle.

Figure 1: Resident population figures by locality area, North Somerset, 2020



Source: ONS mid-2020 population estimates

Figure 2: The three locality areas with pharmacies highlighted



2.3 Pharmaceutical providers

NHS England maintains a number of lists of providers of pharmaceutical services for each Health and Wellbeing Board area. Those lists are of:

Pharmacy contractors (healthcare professionals working for themselves or as employees who practice in pharmacy, the field of health sciences focusing on safe and effective medicines use). Within this category there are the following groups:

Community pharmacies, which mainly provide pharmaceutical services in person from premises in high street shops, supermarkets or adjacent to doctors' surgeries. Most community pharmacies open for at least 40 hours per week, however some are required to be open for a minimum of 100 hours per week;

Distance-selling pharmacies (DSP), which provide pharmaceutical services remotely from the patient: no essential services may be provided face-to-face on the pharmacy's premises. Most DSPs now receive their prescriptions by electronic transfer, and the medication will be delivered to the patient's home using Royal Mail or a courier. There are currently **no distance-selling pharmacies in North Somerset** and this facility is not within the scope of this PNA. It should however be noted that this is an option for obtaining pharmacy services and there are approximately 370 across England. ²

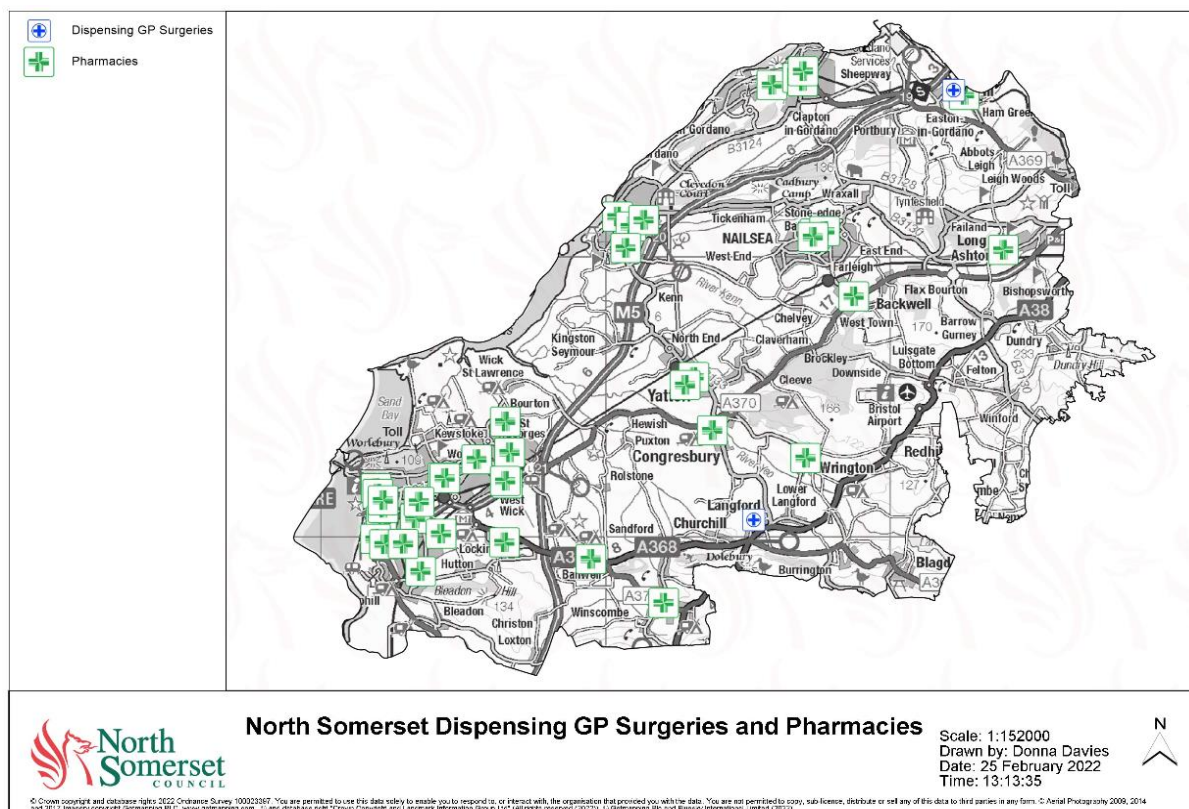
Local pharmaceutical services (LPS) contractors (similar to pharmacy contractors, but the services they provide may be more tailored to the area they serve). There are currently **no LPS contractors in North Somerset**.

Dispensing appliance contractors (providers who supply, on prescription, appliances such as stoma and incontinence aids, dressings, bandages etc. They cannot supply medicines). While there are **no dispensing appliance contractors in North Somerset**, an offer of free home delivery is part of the requirements of the dispensing essential service for 'specified appliances' which includes catheters, catheter accessories and maintenance solutions, laryngectomy or tracheostomy appliances,

Dispensing doctors (medical practitioners authorised to provide drugs and appliances in designated rural areas known as "controlled localities".) There are two dispensing GP practices in North Somerset. Dispensing doctors can only dispense to their own patients.

² <https://www.statista.com/statistics/418249/distance-selling-pharmacies-in-england/> (accessed March 2022)

Figure 3: Pharmacy and dispensing GP practice locations in North Somerset in March 2022



2.4 The scope of this PNA: Pharmaceutical services

Pharmaceutical services are provided by community pharmacies, dispensing GP practices and hospital pharmacies. Hospital pharmacies are not within the scope of this PNA.

Community pharmacies provide services under a contractual framework with three tiers of services: Essential, advanced and enhanced. Each community pharmacy must provide essential services in order to be entered onto the pharmaceutical list.

Unlike for GPs, dentists and optometrists, NHS England does not hold contracts with most pharmacy contractors (the exception being Local Pharmaceutical Services contractors). Instead, as noted above, they provide services under terms of service set out in legislation.

For the purposes of this PNA we consider a ‘necessary’ service to be the essential services. All other advanced, enhanced and locally-commissioned services are not

considered necessary but secure improvements or better access to pharmaceutical services.

2.5 Essential services

- All pharmacies must provide these services. There are seven essential services:
- **Dispensing of prescriptions** – The supply of medicines and appliances ordered on NHS prescriptions, together with information and advice, to enable safe and effective use by patients and carers, and maintenance of appropriate records. Also, the urgent supply of a drug or appliance without a prescription at the request of a prescriber.
- **Dispensing of repeatable prescriptions** – The management and dispensing of repeatable NHS prescriptions for medicines and appliances in partnership with the patient and the prescriber. Repeatable prescriptions allow, for a set period of time, further supplies of the medicine or appliance to be dispensed without additional authorisation from the prescriber, if the dispenser is satisfied that it is appropriate to do so.
- **Disposal of unwanted drugs** – Acceptance of unwanted medicines which require safe disposal from households and individuals.
- **Discharge medicines service** - By referring patients to community pharmacy on discharge with information about medication changes made in hospital, community pharmacy can support patients to improve outcomes, prevent harm and reduce readmissions.
- **Promotion of healthy lifestyles** – The provision of opportunistic healthy lifestyle advice to patients receiving prescriptions who appear to have particular conditions, and pro-active participation in national/local campaigns, to promote public health messages to general pharmacy visitors during specific targeted campaign periods.
- **Signposting** – The provision of information to people visiting the pharmacy, who require further support, advice or treatment which cannot be provided by

the pharmacy, but is available from other health and social care providers or support organisations who may be able to assist the person. Where appropriate, this may take the form of a referral.

- **Support for self-care** – The provision of advice and support by pharmacy staff to enable people to derive maximum benefit from caring for themselves or their families.

Note: where a pharmacy contractor chooses to supply appliances as well as medicines, the requirements of the appliance services also apply.

2.6 Advanced services commissioned by NHS England

- Pharmacies may choose whether to provide these services or not. If they choose to provide one or more of the advanced services they must meet certain requirements and must be fully compliant with the essential services and clinical governance requirements.
- **New medicine service (NMS)** – The promotion of the health and wellbeing of patients who are prescribed a new medicine or medicines for certain long term conditions, by providing support to the patient after two weeks and four weeks with the aim of reducing symptoms and long-term complications, and enabling the patient to make appropriate lifestyle changes and self-manage their condition.
- **Influenza vaccination service** – The provision of seasonal influenza vaccinations to patients in at-risk groups, to provide more opportunities for eligible patients to access vaccination with the aim of sustaining and maximising uptake.
- **Stoma appliance customisation service** – The modification to the same specification of multiple identical parts for use with a stoma appliance, based on the patient's measurements (and, if applicable, a template) to ensure proper use and comfortable fitting, and to improve the duration of usage.
- **Appliance use review service (AUR)** – The improvement of patient knowledge, concordance and use of their appliances through one-to-one

consultations to discuss use, experience, storage and disposal, and if necessary, making recommendations to prescribers.

- **Community Pharmacist Consultation Service (CPCS)** – The urgent supply of a Prescription Only Medicine (POM) without a prescription to a patient who has previously been prescribed the requested POM. The service takes referrals from NHS 111 (and NHS 111 online for requests for urgent supply), Integrated Urgent Care Clinical Assessment Services and in some cases, patients referred via the 999 service. These services can also refer patients for minor illness consultations. Since November 2020, general practices have also been able to refer patients. If a community pharmacist does make a supply of a medicine or appliance through CPCS they are required to notify the patient's GP on the day the supply is made or on the following working day.
- **Hypertension Case-Finding Service** - The service aims to help prevent cardiovascular disease by identifying people aged 40 years or older with high blood pressure who have previously not had a confirmed diagnosis of hypertension. At the request of a general practice, the pharmaceutical provider can undertake ad hoc normal and ambulatory blood pressure measurements; provide 24-hour ambulatory blood pressure monitoring (ABPM) for those with high blood pressure readings and promote healthy behaviours to patients.
- **Hepatitis C testing service** - The provision of point of care testing for Hepatitis C antibodies to people who inject drugs, i.e. individuals who inject illicit drugs, e.g. steroids or heroin, but who haven't yet moved to the point of accepting treatment for their substance use. Where people test positive for Hepatitis C antibodies, they will be referred for a confirmatory test and treatment, where appropriate.
- **Smoking Cessation Service** – The provision of evidence-based smoking cessation support for 12 weeks including follow up after patient discharge from hospital. NHS trusts can refer patients to a pharmacy of their choice so they can receive continuing treatment, advice and support with their attempt to quit smoking.

2.6.1 Enhanced Services

Enhanced services are also directly commissioned by NHS England. The only enhanced service in North Somerset are Specialist Medicines Service (SMS).

2.6.2 Locally commissioned services

Since April 2013, services other than the essential services have been commissioned from community pharmacies by a number of organisations.

Locally-commissioned services are commissioned by North Somerset Council or NHS Bristol, North Somerset and South Gloucestershire (BNSSG) Clinical Commissioning Group (CCG) in response to local health needs that are identified through the JSNA (Joint Strategic Needs Assessment) and the health priorities identified through relevant strategies, such as the North Somerset Joint Health and Wellbeing Strategy (2021-2024) and the BNSSG Primary Care Strategy (2019-2025).

North Somerset's Joint Health and Wellbeing Strategy (2021-2024)³

The Joint Health And Wellbeing Strategy sets out the vision, shared ambitions, principles, and actions for health and wellbeing across North Somerset from 2021-2024.

It aims to identify areas for improvement in health and wellbeing and to reduce health inequalities.

The strategy and action plan are centred around three main approaches:

- prevention - prevent people from becoming unwell or experiencing poor health and wellbeing
- early intervention - support people to identify and manage health and wellbeing problems as early as possible. Ensure support is in the right place to address those problems
- thriving communities - focus on the wider factors and influences on health, and work with partners to support communities to thrive.

³ [North Somerset Joint Health and Wellbeing Strategy \(2021-2024\)](#) – accessed 01/03/2022

Within these approaches, the following priority themes will be addressed:

- mental health and wellbeing
- physical activity
- diet and nutrition
- tobacco use
- alcohol use
- substance use
- other factors that may contribute to health.

The strategy and action plan address these themes across all areas of life, from children and young people, to adults and older people.

Healthier Together BNSSG Primary Care Strategy 2019 2024⁴

The following diagram represents the primary care priorities for the Bristol, North Somerset and South Gloucestershire CCG.

Figure 4: Primary Care priorities for BNSSG

Aim	Priorities	Objectives	Deliverables	Outcomes
A Resilient and Thriving Primary Care at the heart of an Integrated Health and Social Care system by 2024	Models Of Care	Improving access to a wider range of care in a community setting	Achieving new models of care that support people to stay well based on close working across primary care and the community that boosts out of hospital care for all	Improved Primary Care resilience Increased patient satisfaction with faster access to care when needed with the most appropriate person at the right time
	Quality & Resilience	Decreasing health inequalities and unwarranted variation	Prioritisation of prevention and tackling health inequalities	Reduced health inequalities and unwarranted variation
	Developing the Workforce	Addressing variability in Quality and Outcomes	More proactive and personalised care with more people having control over their health	Optimal quality of care and better health outcomes
	Infrastructure	Improving continuity of care	Increased skill mix and workforce	There are the right people employed to support the local population need
		Managing increasing demands and workload in Primary Care with reducing workforce numbers	Release time for care in Primary Care	Increased control over workload due to increased efficiency, skill mix, education and resourcing
		Supporting integration of services	Care underpinned by digitally enabled systems	Reduced staff turnover and increased job satisfaction within our health and social care system Effective collaboration across health and social care to improve population health management

⁴ [Healthier Together BNSSG Primary Care Strategy 2019 2024](#) accessed 01/03/2022

More detailed descriptions can be found in Appendix IV: Locally commissioned services.

2.6.2.1 Locally commissioned services by BNSSG CCG

- Patient group directions service to support the management of minor ailments where the pharmacist can supply some prescription only treatments
- A service to support supervised consumption of tuberculosis medicines
- An antiviral service in case of flu outbreaks
- Emergency supplies of medicines, which enables the pharmacist to provide a supply of a prescription only medicine when required to ensure prompt access and continuity of supply for the person e.g. if they have run out of their medicines on a weekend.

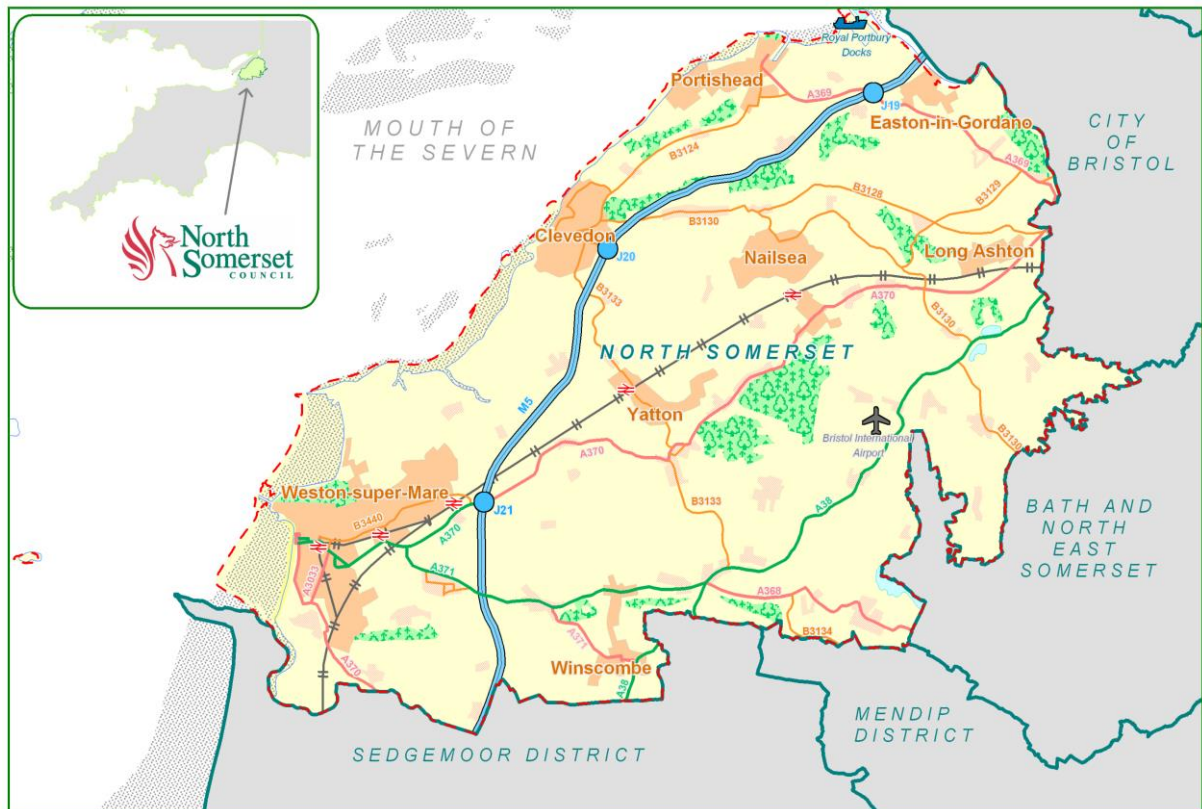
2.6.2.2 Locally commissioned services by North Somerset Council

- Young adult Sexual Health Services (including condoms, emergency contraception, chlamydia screening and treatment)
- Needle and Syringe Exchange Service for injecting drug users
- Supervised Consumption Service for opiate substitute treatment with methadone or buprenorphine
- Stop Smoking Services (including supply of nicotine replacement products and varenicline (via patient group directions)).

3 Overview of North Somerset

North Somerset Unitary Authority covers an area of approximately 145 square miles, bordering the local government areas of Bristol, Bath and North East Somerset, Mendip and Sedgemoor, see Figure 5.

Figure 5: Map of North Somerset area



This map is reproduced from Ordnance Survey material with the permission of Ordnance Survey on behalf of the Controller of Her Majesty's Stationery Office © Crown copyright. Unauthorised reproduction infringes Crown copyright and may lead to prosecution or civil proceedings. North Somerset Council, 100023397, 2006

Source: © Crown copyright 2011 Ordnance Survey 100023397

3.1 Population

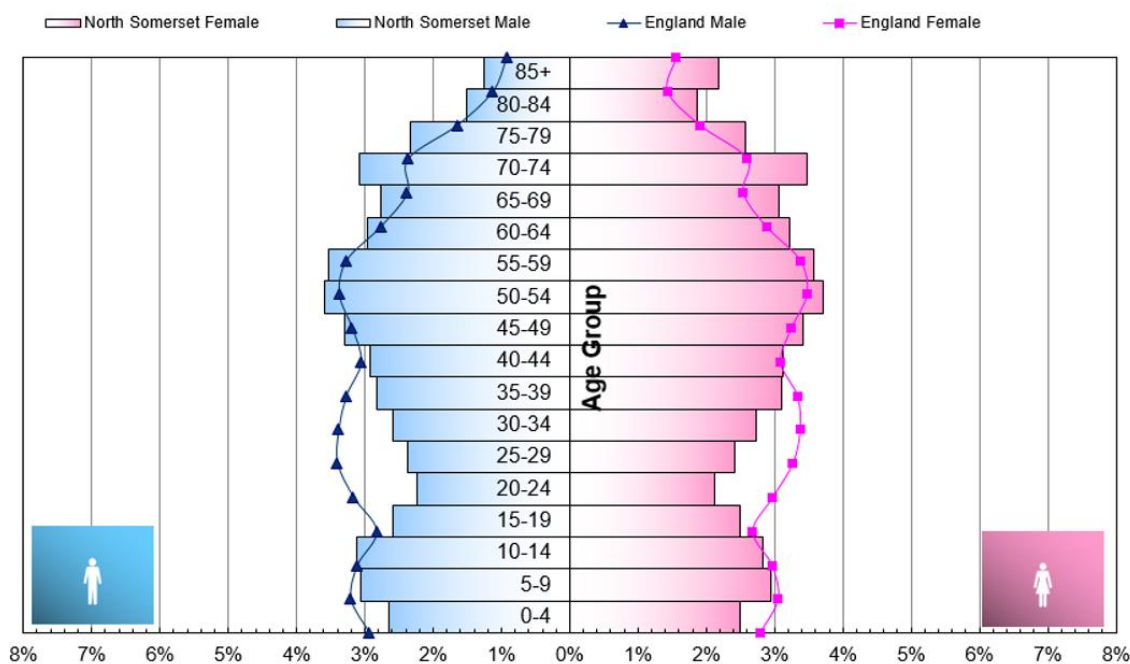
The population of North Somerset in 2020 was estimated to be 215,574 (49% male; 51% female)⁵. The main settlements are Weston-super-Mare (84,461 people) and the three smaller towns of Clevedon (21,451 people), Nailsea (15,522 people) and

⁵ Office for National Statistics, Mid-year estimates 2020.

Portishead (26,511 people). Over two thirds of people in North Somerset live within these four towns, with the remaining living in the villages and countryside.

The age structure in North Somerset is older, with fewer young people aged between 20 and 39 years compared to the national average (20% in North Somerset, 26% in England). North Somerset has a larger proportion of older people with almost one in four people (24%) aged over 65 years compared to 19% in England. One in eight people are aged over 75, 3% are aged over 85 and 1% are aged over 90 years.

Figure 6: Population breakdown by gender for North Somerset and England, 2020



Source: ONS Mid-year estimates for 2020

3.1.1 Ethnicity

Coming from a black or minority ethnic (BME) background can impact negatively on your health. This might be because of passive or active discrimination or may be linked to other factors which can include deprivation, poverty, and/or from a genetic predisposition to certain illnesses. Overall, this means that people from some BME backgrounds have poorer health and shorter life expectancy than the general population.

In the last available census from 2011 the BME population (all ethnic groups other than white) of North Somerset accounted for 2.7% (5,490 people), compared to 4.6% in the South West and 14.6% in England as a whole. Of those from a black or minority

ethnic group 43% classified themselves as Asian and a further 37% classified themselves as mixed race. Table 1 shows the breakdown of the North Somerset population by ethnic group in comparison to the average for England and Wales.

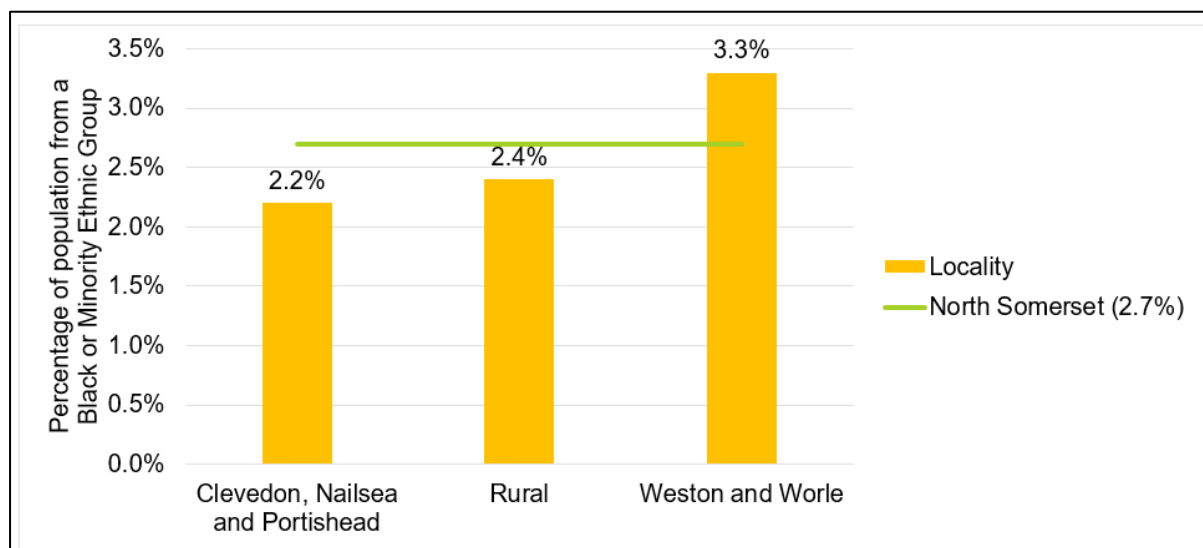
Table 1: Population estimates by ethnic group in North Somerset and England and Wales

	North Somerset		England and Wales	
	Number	%	Number	%
All Groups	202,566	100%	56,075,912	100%
White	197,076	97.3%	48,209,395	86%
Mixed	2,033	1.0%	1,224,400	2%
Asian	2,436	1.2%	4,213,531	8%
Black	632	0.3%	1,864,890	3%
Other	389	0.2%	563,696	1%

Source: 2011 Census

Estimates about the BME population in the three localities suggest that proportions are highest in Weston and Worle and below North Somerset average in the other two localities.

Figure 7: Percentage of the population from a Black or Minority Ethnic Group, 2011



Source: 2011 Census

3.1.2 Religion

In the 2011 census 61% of respondents reported being Christian, 0.3% being Muslim 0.3% being Buddhist, 0.2% being Hindu and 0.1% being Jewish. 30% of people who answered the census question reported not having a religion. Due to the small numbers religion was not assessed at locality level.

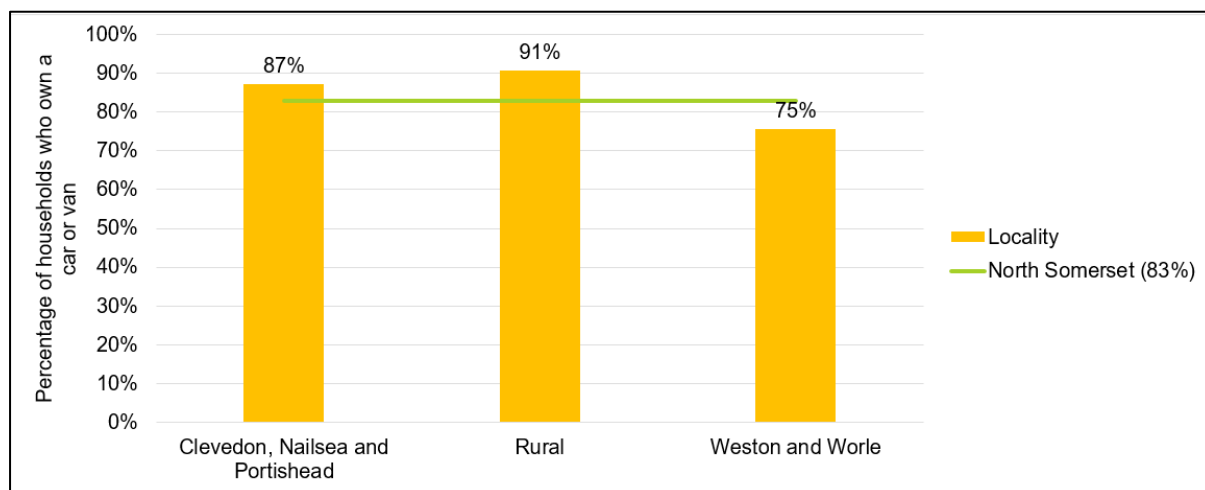
3.1.3 Disability

Of the total population in North Somerset, 8.6% (17,335) had a disability that limited their day-to-day activities a lot and 10.6% (21,405) had a disability that affected their day-to-day activities a little. (Census, 2011). Around half of those severely limited live in the Weston and Worle locality, 29% in the Clevedon, Portishead and Nailsea locality, and the lowest proportion in the Rural locality (19%).

3.1.4 Car ownership

North Somerset has a high rate of car ownership, particularly in the rural areas. Residents in the Weston and Worle locality have the lowest car ownership and a quarter do not have access to a car (see Figure 8).

Figure 8: Percentage of households who own a car by locality area, 2011



Source: 2011 Census, Nomis QS416EW

3.2 Deprivation

North Somerset is an overall relative affluent area, but with areas of significant deprivation.

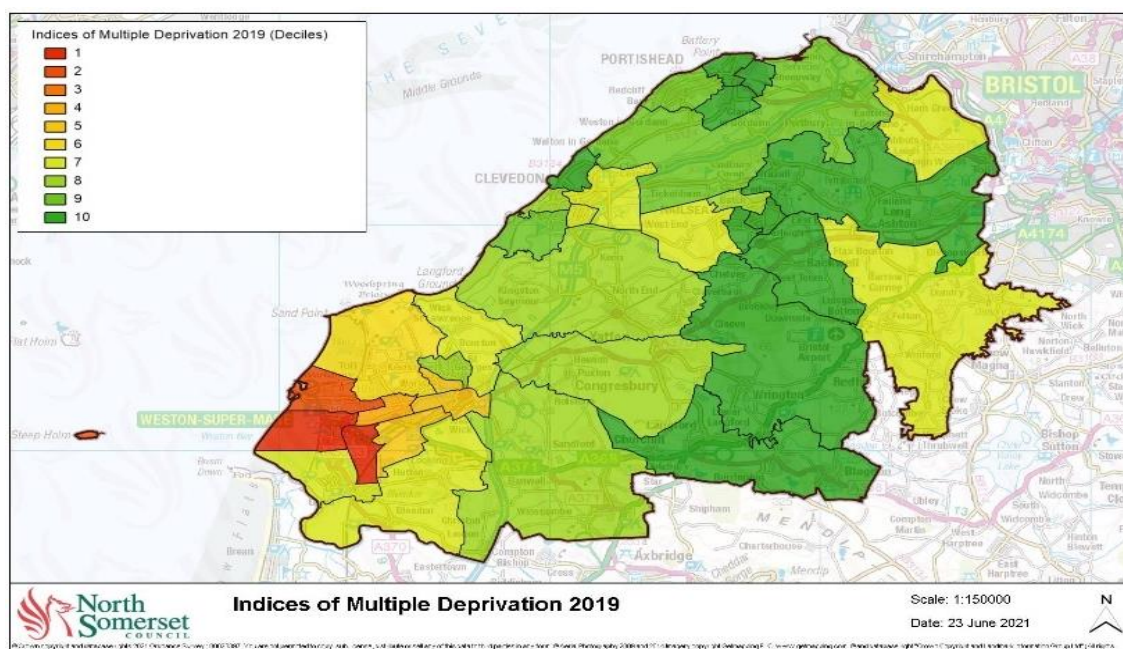
The English Indices of Deprivation 2019 (IMD 2019) provides a relative ranking of areas across England according to their level of deprivation.

The Indices of Multiple Deprivation are based on the premise that multiple deprivation is made up of the following separate dimensions, or 'domains' of deprivation, each of which is weighted as follows:

- Income Deprivation (22.5%)
- Employment Deprivation (22.5%)
- Health Deprivation and Disability (13.5%)
- Education, Skills and Training Deprivation (13.5%)
- Barriers to Housing and Services (9.3%)
- Crime (9.3%)
- Living Environment Deprivation (9.3%)

North Somerset continues to have areas within both the most deprived 1% nationally, and the least deprived 1% nationally. North Somerset has the fifth largest range of inequality of all of the 317 authorities in England (calculated using the difference between the highest and lowest score in a unitary authority). Nineteen of the 135 lower super output areas (LSOAs) in North Somerset are within the most deprived 25% of areas nationally. All are within the Weston and Worle Locality Area. Figure 9 illustrates the distribution by deciles.

Figure 9: Deprivation (IMD 2019) in North Somerset



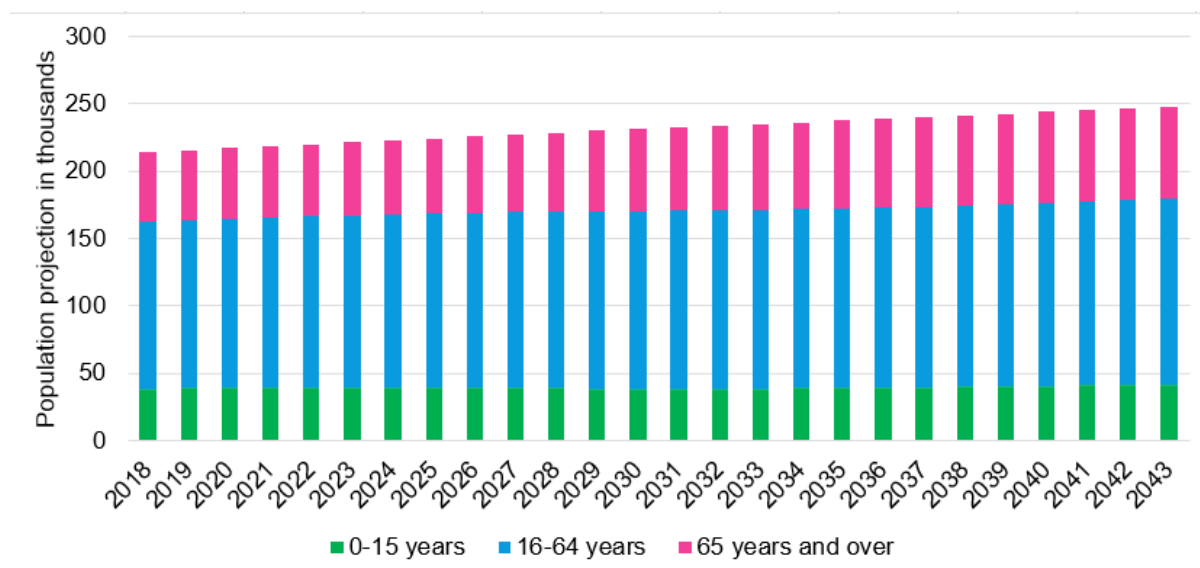
© Crown copyright and database rights 2021 Ordnance Survey 100023397. You are not permitted to copy, sub-license, distribute or sell any of this data to third parties in any form. © Aerial Photography 2009 and 2014 Imagery copyright Getmapping PLC. www.getmapping.com. © and database right "Crown Copyright and Landmark Information Group Ltd" (All rights reserved (2021)).

The dimensions contributing the largest amount of deprivation in North Somerset relate to the domains of employment deprivation, health deprivation and disability and income deprivation. In all but one of the seven domains, Weston-super-Mare contains the North Somerset LSOAs within England’s most deprived quintile, clearly demonstrating the area of greatest need. The one domain of exception is the barriers to housing and services domain, where the affect is seen in more rural areas. Very few LSOAs fall within the most deprived quintile for the Living Environment domain.

3.3 Population growth

Figure 10 demonstrates that the population of North Somerset will continue to grow significantly over the coming years. By 2030 the population of North Somerset is estimated to be at 231,000 people. This is an anticipated rise of 7.3 % from the mid 2020 estimate and is higher than the projected England growth of 4.7%.

Figure 10: Population projections (2018-2043) for North Somerset



Source: ONS 2018-based Subnational Population Projections

This increase is not driven primarily by an increase in births, there are in fact less births than deaths (a negative natural population gain), and the average number of children a woman has during her lifetime is declining. The population increase is driven by migration. Migration is both internal within the UK i.e. people moving from other areas to North Somerset and international i.e. people moving to North Somerset from other countries. Internal migration makes up the bulk of overall migration to the area.

3.3.1 Growth in older population age groups

North Somerset faces significant demographic pressures with a population which is both ageing and growing. One in four people in North Somerset are aged over 65 years. Between 2022 and 2027 in North Somerset there is expected to be per annum growth of 0.7% across all age groups. The largest increase is in the 80-84 age group (7.2% per annum).

Longer term projections estimate growth of 0.6% per year is expected to continue across all ages between 2022 and 2032. The largest growth across the ten year period will be in the 85-89 age group (5.4% per annum).

However, the longer the projected time horizon the more inaccurate the modelling is expected to be, so this should only be used as an indicator.

3.3.2 Housing developments

The adopted North Somerset Core Strategy sets out the broad long-term vision, objectives and strategic planning policies for North Somerset up to 2026.

The plan outlines the vision to deliver sustainable housing developments across North Somerset to meet housing needs, through the provision of a minimum of 20,985 new homes by 2026.

The following table shows where current planned housing development is to be located within North Somerset, which incorporates a longer time frame to 2038 taking account of the emerging draft Local Plan allocations as well as the existing Core Strategy.

Table 2: Anticipated housing development in North Somerset to 2038

Location	Houses to 2038
Weston-super-Mare	6,980
Wolvershill (north of Banwell)	2,800
Clevedon	226
Nailsea	1,781
Portishead	572
Yatton	391
Backwell	1,120
Yanley Lane (Woodspring Golf Course)	2,500
Villages and rural area	1,676

3.3.2.1 Weston Villages Development

The Weston Villages are the main strategic growth area for North Somerset and are forecast to deliver up to 6,500 new homes and 10,000 new jobs. This equates to a potential 14,950 new residents in the area.

The development is split across two “villages”: Haywood village (formally known as “Winterstoke village”) on the former Weston Airfield and Parklands village comprising the former RAF Locking base and surrounding land. The split would be approximately 5,865 residents in the Haywood Village area and 9,085 new residents in the Parklands village. Details of the development and plans can be found in the North Somerset Core Strategy⁶.

Key principles guiding these villages are set out in the Weston Villages Supplementary Planning Document (SPD) but are summarized as:

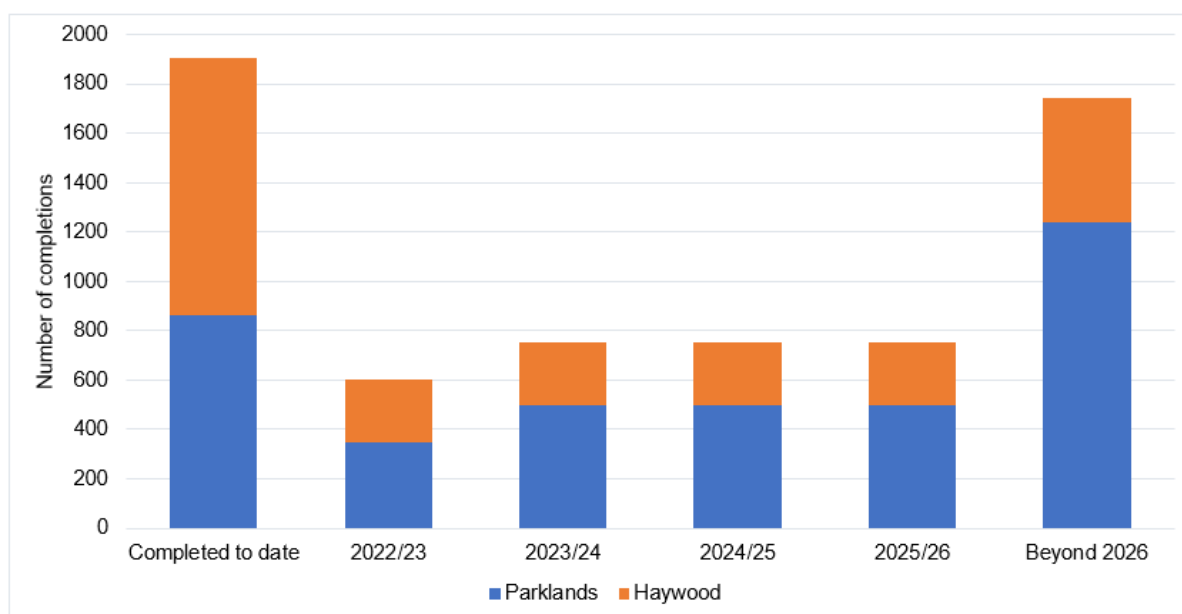
- “Place-making” and “community-building”: seeking to create distinct, relatively self-contained settlements with their own sense of identity and community feeling. There is a strong desire to avoid ‘urban sprawl’.
- Employment-led: developers are to provide 1.5 jobs for every home that is built.

The developments will be supported by a range of infrastructure, including flood mitigation, open space, bus services, foot / cycle / bridleway links, schools, local centres, community facilities, sports pitches and a new health practice. Funding for community capacity building work has also been secured.

Figure 11 shows the planning trajectory for the development, which shows the majority of houses will become available outside of the timeframe of this PNA.

⁶ <https://www.n-somerset.gov.uk/my-services/planning-building-control/planning-policy/core-strategy> (accessed 01/03/2022)

Figure 11: Building development trajectory for Weston Villages



3.3.3 Progress to date

- The first 863 homes at Parklands Village are complete and occupied. Consents have been granted for a further 3,000 homes and they are expected to be built within 10 years.
- At Weston Airfield (now branded as Haywood village) the first phase of 900 homes is complete and occupied. The second phase comprises 1,650 homes. Work is underway, with the first 143 homes complete. The rest of the site has planning permission, and construction is ongoing.

3.4 Health and Wellbeing in North Somerset

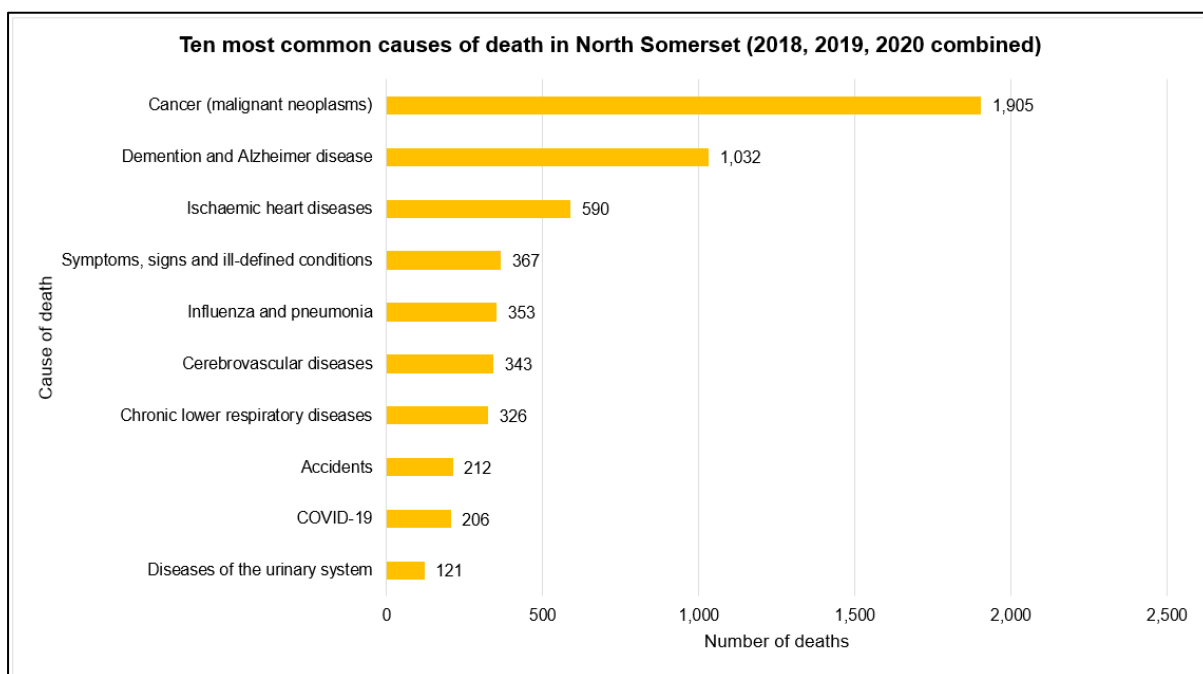
Both males and females born in North Somerset can expect to live, on average, beyond the respective levels for England as a whole. Life expectancy at birth in North Somerset was 80.5 years for a male and 84.6 years for a female (2018-2020), while the respective figures for England were 79.4 years and 83.1 years.

However, the life expectancy gap between the most and least deprived areas in North Somerset is higher than in the South West with men expected to live 10 and women 8 fewer years in the most deprived areas compared to the most affluent areas.⁷

On average, people in North Somerset live over 15 years in poor health (17 years among females, 14 years among males).

Before the Covid-19 pandemic, cancer, dementia and cardiovascular disease were the leading causes of premature mortality in North Somerset and the leading contributors to health inequality in life expectancy.

Figure 12: Main causes of death in North Somerset

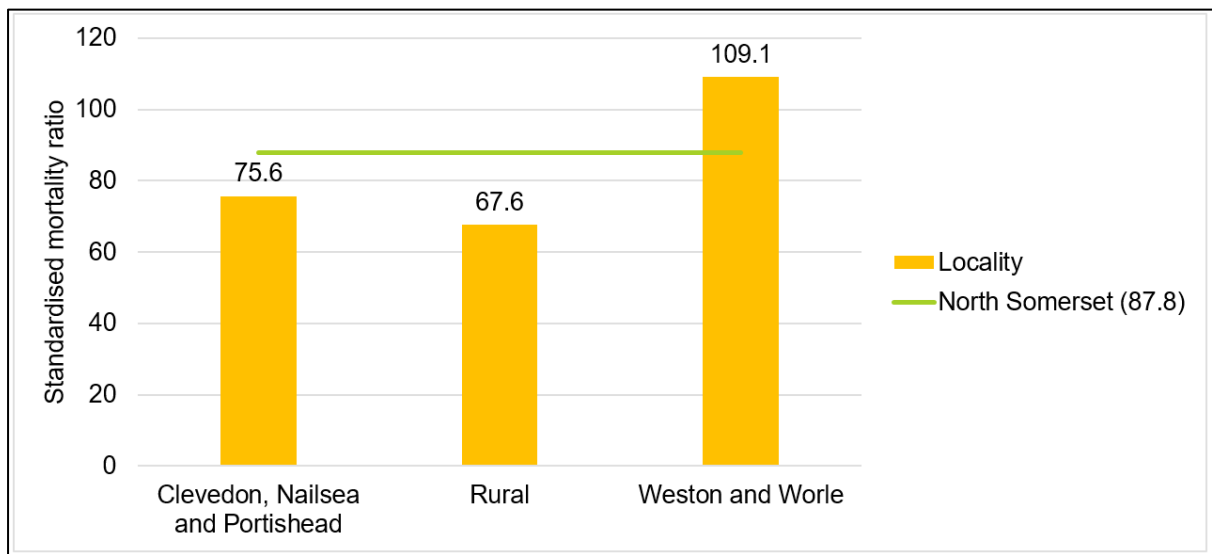


Source: Office for National Statistics/NOMIS

People living in the Weston and Worle locality are most likely to die prematurely compared to the rest of the North Somerset population.

⁷ Public Health England. Public Health Outcomes Framework.

Figure 13: Premature deaths (<75 years) by locality (2015-2019)

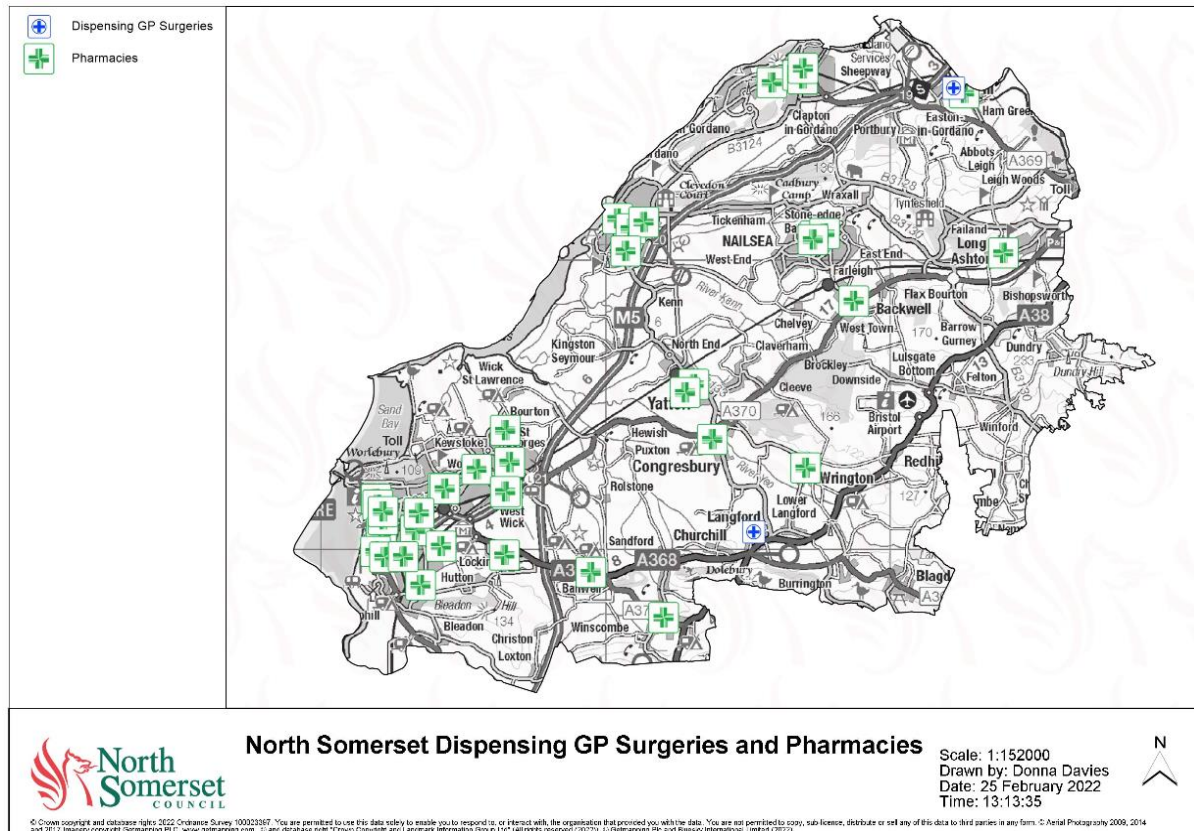


Detailed health indicators contained in Appendix I: Locality health needs also reflect the higher burden of disease in the Weston and Worle locality compared to the other localities.

4 Current pharmacy provision and dispensing activity in North Somerset

There are currently 40 community pharmacies in North Somerset and two dispensing GP practices (see Figure 14). This represents a rate of 19 per 100,000 residents. Six pharmacies provide extended opening hours of 100 hours per week.

Figure 14: Pharmacy and dispensing GP practice locations



In 2020/21, more than four and a half million (4,514,576) prescriptions were generated in the 14 GP practices within the local authority area of North Somerset.

The majority (92%) of these prescriptions were dispensed in community pharmacies, with almost all of these (99%) being within North Somerset.

Around 4% (192,067) of prescriptions were dispensed by GP practices, 58% (110,465) are recorded against Mendip Vale Medical Practice and a further 10% (19,377) are recorded against Heywood Family Practice. Both of these practices are classed as 'Dispensing GP' practices. For reference, 12% of patients at Mendip Vale Medical Practice and 15% of patients at Heywood Family Practice are classed as 'dispensing patients'.

Three percent of the prescriptions were dispensed by Distance Selling Pharmacies (DSP) and a further one percent were dispensed by Dispensing Appliance Contractors (DAC). There are no DSP or DAC dispensers located within North Somerset. A very small number of prescriptions (23) were dispensed by Local Pharmaceutical Services (LPS) outside of North Somerset.

Across England and Wales, average figures show that 80% of prescriptions are dispensed in community pharmacies, 10% are dispensed by DACs, 5% are dispensed by DSPs and 1% are dispensed by LPSs. The dispensing contract type is not recorded for 5% of prescriptions.

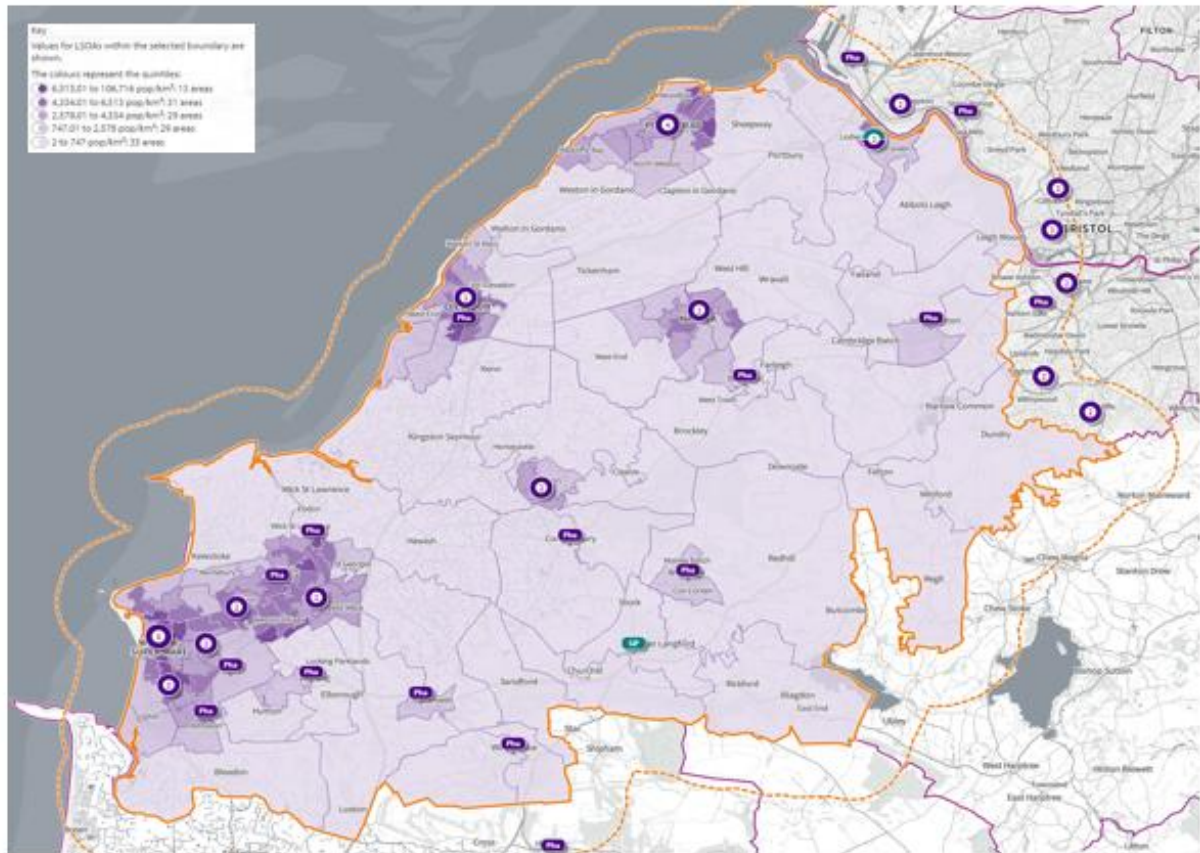
Available data for August 2021 shows that 358,269 items were prescribed, of these

- 29% were prescribed by GPs in the Clevedon, Nailsea and Portishead locality
- 27% were prescribed by GPs in the Rural locality
- 43% were prescribed by GPs in the Weston and Worle locality.

All pharmacies in North Somerset provide Electronic Prescription Service (EPS).

Residents in the northern parts of North Somerset benefit mostly from the proximity to a number of pharmacies within 1 mile (1.6km) of the local authority area. Figure 15 shows the location of pharmacies and dispensing practices in relation to the population density. This is to reflect that some areas that show up in the subsequent travel time analysis are usually not very populous.

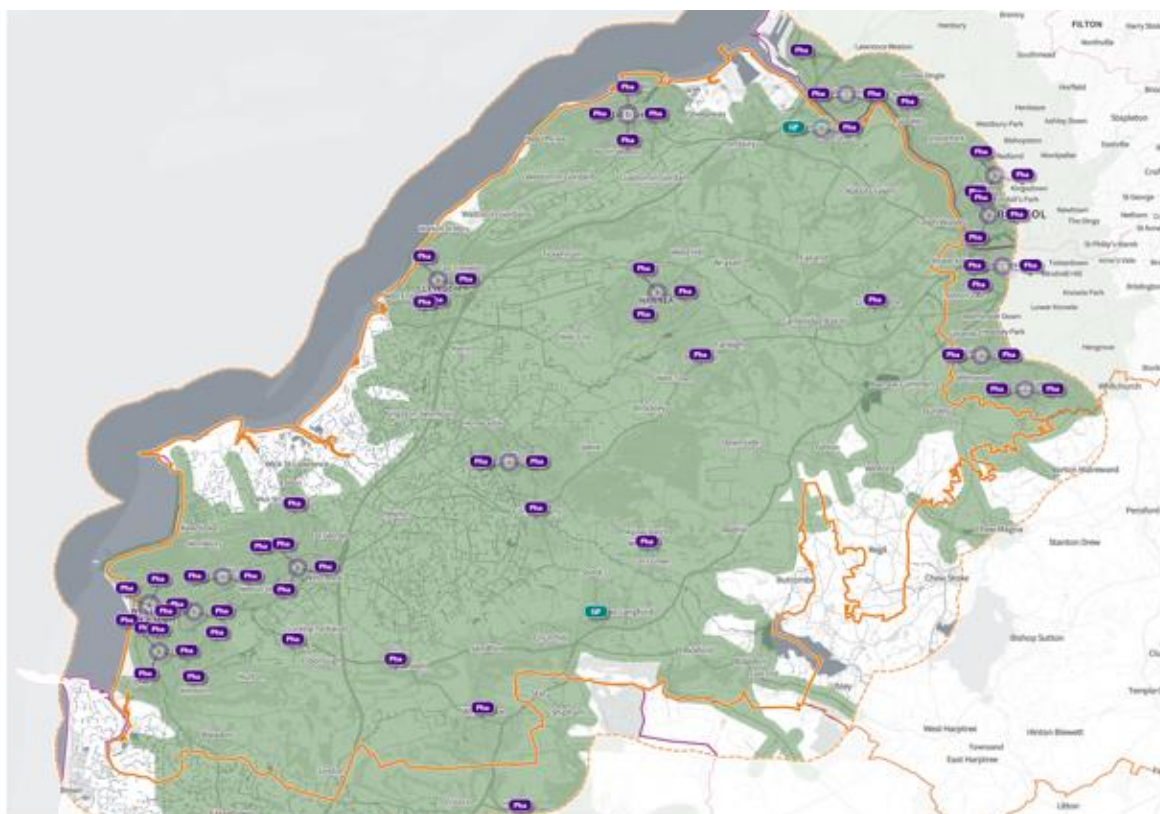
Figure 15: North Somerset pharmacies and dispensing practices by population density with 1 mile (1.6km) buffer



4.1 Considerations for North Somerset

Analysis for the whole of North Somerset shows that 84.4 % of the population are within 1.6km (1 mile) or 20-minute walk of a community pharmacy. Almost the entire population (99.2%) is within a 10 minute average peak drive time of a pharmacy. 90.3% percent of the population is within a 5 minute average peak drive time to a pharmacy.

Figure 16: Pharmacies and dispensing practices within 10 minute car journey, North Somerset



More than three quarter of the population (82.9%) are within a ten minute journey by public transport of a pharmacy, with 98.5% of the population within a 30 minute public transport journey time. Further travel time analysis is contained in Appendix II: Travel time maps.

4.1.1 Impacts of tourism

North Somerset is a popular destination and place to visit attracting an estimated 7.78 million day visitors a year⁸.

Seasonal peaks are seen in July-September (over 1 million per month) and whilst there will be some distribution across North Somerset it is reasonable to assume Weston-super-Mare is a key visiting destination.

⁸ The Economic Impact of North Somerset's Visitor Economy (2017) <https://www.n-somerset.gov.uk/sites/default/files/2020-02/economic%20impact%20of%20North%20Somersets%20visitor%20economy%202017.pdf> (accessed Feb 2022)

Services need to plan for the additional capacity required particularly at weekends although the specific health requirements of visitors to the area will vary considerably.

4.1.2 Bristol Airport

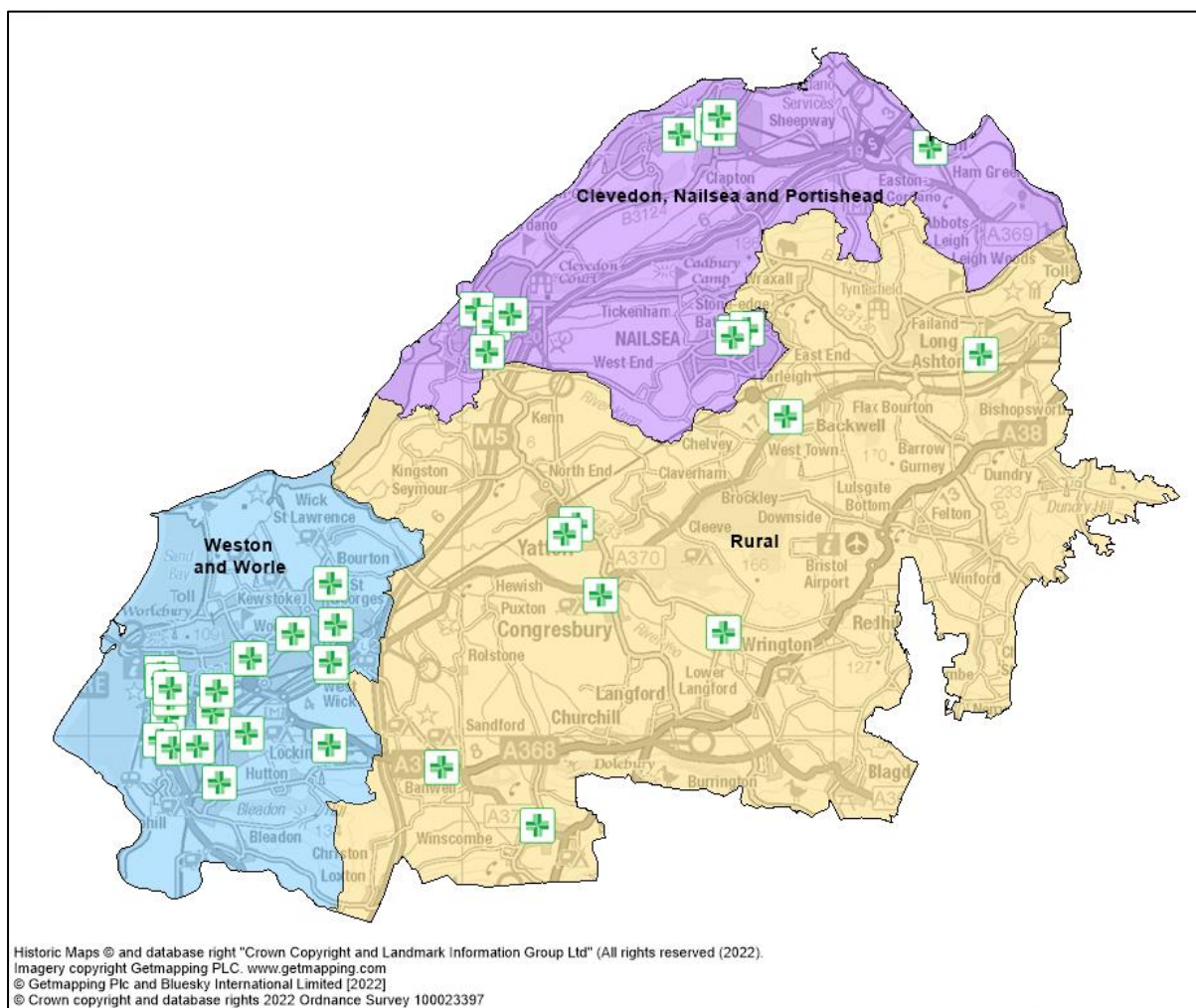
North Somerset is the location of Bristol airport which served over 8.9 million passengers in 2019. The PNA steering group have not been made aware of the need for specific pharmacy provision onsite and hence do not feel there is a need for additional capacity to cater for passenger needs.

Whilst the PNA steering group acknowledge the impacts of tourism on services we have no evidence to suggest there is a significant burden on pharmacies and this was not raised during previous consultations.

4.2 Pharmacy provision by locality area

Figure 17 shows the distribution of community pharmacies in North Somerset with the locality boundaries included.

Figure 17: Distribution of pharmacies in each locality area



As previously mentioned, the number of residents in each locality and their geographical spread differ for each locality. Table 3 contains an analysis of community pharmacy provision in relation to the population. In addition, the number of hours that the pharmacies are open was calculated.

Table 3: Number and rate of pharmacies by locality area

	Number of residents	Number of community pharmacies	Rate per 100,000 pop	Opening hours per 100,000 population
Clevedon, Nailsea and Portishead	72,048	12	17	901
Rural	46,703	8	17	779
Weston and Worle	96,823	20	21	1,348

	Number of residents	Number of community pharmacies	Rate per 100,000 pop	Opening hours per 100,000 population
North Somerset	215,574	40	19	1,076

Based on data received 1 June 2022

The Rural locality has the lowest number of pharmacies but when the population is taken into account the rate is similar to the Clevedon, Nailsea and Portishead locality. However, when opening hours are taken into account, the rural locality has the lowest rates of all with Weston and Worle having significantly higher rates both in terms of numbers and opening hours.

There are two dispensing GP practices in North Somerset, one based in Langford (in the Rural locality) and one based in Pill (in the Clevedon, Nailsea and Portishead locality). Their opening hours are shown in Table 4. If these practices are added to the number of community pharmacies, the distribution across the three localities becomes more even as shown in Table 5.

Table 4: Opening hours of dispensing GP practices

Dispensing Practice	Monday – Friday opening times	Saturday opening times
Mendip Vale Surgery, Langford	08:00 – 18:30	09:00 – 12:00
Heywood Family Practice, Pill	08:30 – 18:30	Closed

A dispensing practice should only dispense to patients who live more than 1.6 km (1 mile) from a pharmacy and are in ‘controlled localities’ which are areas which NHS England has formally determined to be ‘rural in character’. The parish of Churchill was declared a controlled locality in 2013.

Table 5: Number and rate of pharmacies and dispensing practices by locality area.

	Number of residents	Number of community pharmacies and dispensing practices	Rate per 100,000 pop
Clevedon, Nailsea and Portishead	72,048	13	18
Rural	46,703	9	19
Weston and Worle	96,823	20	21
North Somerset	215,574	42	19

Opening hours are illustrated in summary in Figure 18: Pharmacy opening hours by locality.

Figure 18: Pharmacy opening hours by locality

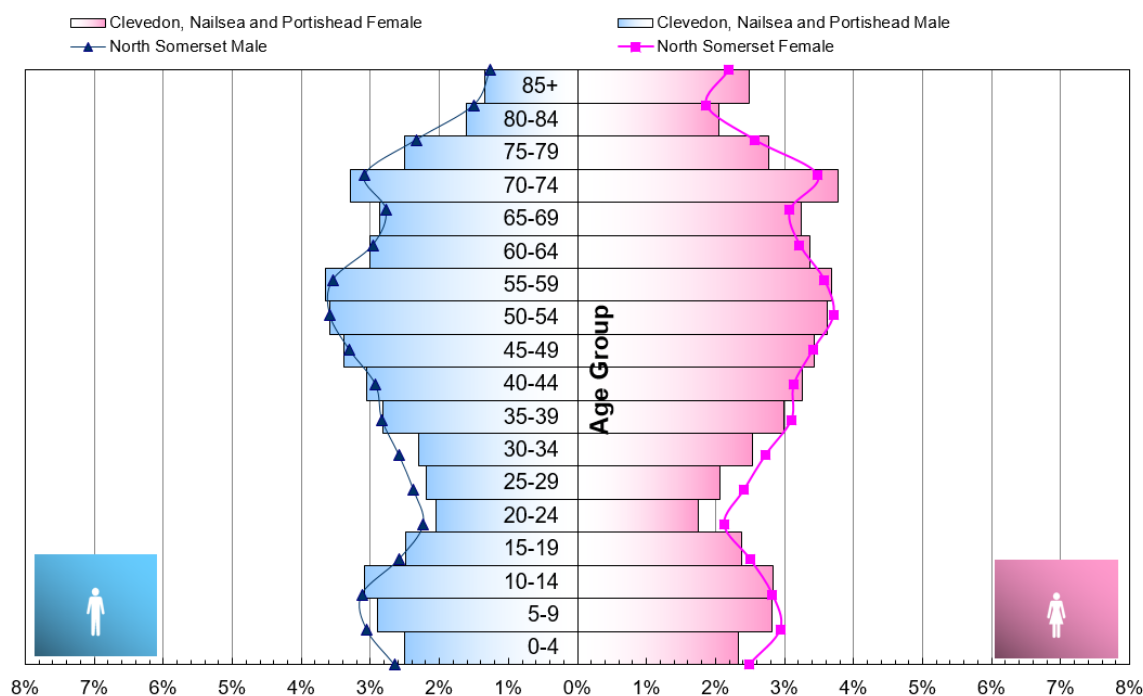
Locality	Day	Open	Midnight - 2am	2am - 4am	4am - 6am	6am - 8am	8am - 10am	10am - noon	Noon - 2pm	2pm - 4pm	4pm - 6pm	6pm - 8pm	8pm - 10 pm	10pm - midnight	Close
Clevedon, Nailsea and Portishead	Monday	07:00													23:00
	Tuesday	07:00													23:00
	Wednesday	07:00													23:00
	Thursday	07:00													23:00
	Friday	07:00													23:00
	Saturday	08:00													20:00
	Sunday	09:00													17:00
Rural	Monday	09:00													18:30
	Tuesday	09:00													18:30
	Wednesday	09:00													18:30
	Thursday	09:00													18:30
	Friday	09:00													18:30
	Saturday	09:00													17:30
	Sunday	09:00													17:30
Weston and Worle	Monday	06:00													23:59
	Tuesday	00:00													23:59
	Wednesday	00:00													23:59
	Thursday	00:00													23:59
	Friday	06:00													23:59
	Saturday	06:00													23:59
	Sunday	06:00													21:00

5 Locality profiles

5.1 Clevedon, Nailsea and Portishead Locality

With a population of around 72,000 residents, the Clevedon, Nailsea and Portishead locality contains a third of the population of North Somerset. The residents of the three towns in the northern part of North Somerset have a similar age profile to North Somerset with slightly more residents aged 70-74.

Figure 19: Age profile of Clevedon, Nailsea and Portishead Locality



Life expectancy at birth is two years higher for males and females than the North Somerset averages with a lower fertility rate of 60 compared to 61 across North Somerset.

Around 1 in 6 residents (17%) in this locality report a limiting long term illness, lower than the North Somerset average of 19%. Key health indicators, such as emergency admissions and deaths from coronary heart disease are lower than across North Somerset (see details in Appendix I: Locality health needs)

There are currently 12 pharmacies and 1 dispensing practice (overall rate of 18 per 100,000 population) in Clevedon, Nailsea and Portishead locality as of March 2022.

10 pharmacies are owned by national pharmacy chains:

- 3 by Boots Pharmacy
- 2 by Lloyd's pharmacy
- 2 by Day Lewis Pharmacy
- 1 by Cohen's Pharmacy
- 1 by Bestway (Well) Pharmacy
- 1 by Tesco Pharmacy.

There are 2 other pharmacies in Clevedon, Nailsea and Portishead not part of national pharmacy chains. There is one 100-hour pharmacy in Clevedon, Nailsea and Portishead (Boots Pharmacy, High Street, Portishead) and eleven 40-hour pharmacies. All pharmacies are Community Pharmacist Consultation Service (CPCS) accredited with a total of 838 CPCS consultations in the first 9 months of 2021/22 (April to December).

Since the last PNA was published two pharmacies have closed; one in Portishead and one in Nailsea. No new pharmacies have opened.

Over the last three years provision in Clevedon, Nailsea and Portishead has been as follows:

Year	Number of pharmacies	Pharmacies per 100,000 population	Items dispensed per head
2018/19	14	19.5	19.1
2019/20	14	19.5	19
2020/21	14	19.4	16.7
2021/22 (9 months)	12	16.7	-
North Somerset 2018/19	42	19.6	21.2
North Somerset 2019/20	41	19.1	21
North Somerset 2020/21	42	19.5	19.4
South West 2020/21	1,065	18.8	16.8
England 2018/19	11,997	21.4	18.1
England 2019/20	11,938	21.2	18.4
England 2020/21	11,748	20.8	18

Notes:

1. Populations are based ONS mid-year population estimates. The population for each financial year is taken as the mid-year estimate for the first of the two years that make up the financial year. For example, for 2019/20 the population is taken as the mid-year estimate for 2019.

2. Mid-year population estimates were not available for 2021 at the time of writing
3. Number of pharmacies and total items dispensed in England and South West England in 2020/21 are taken from Supporting Tables from NHSBSA found at: <https://www.nhsbsa.nhs.uk/statistical-collections/general-pharmaceutical-services-england/general-pharmaceutical-services-england-201516-202021>
4. All pharmacy numbers include both community pharmacies and DACs

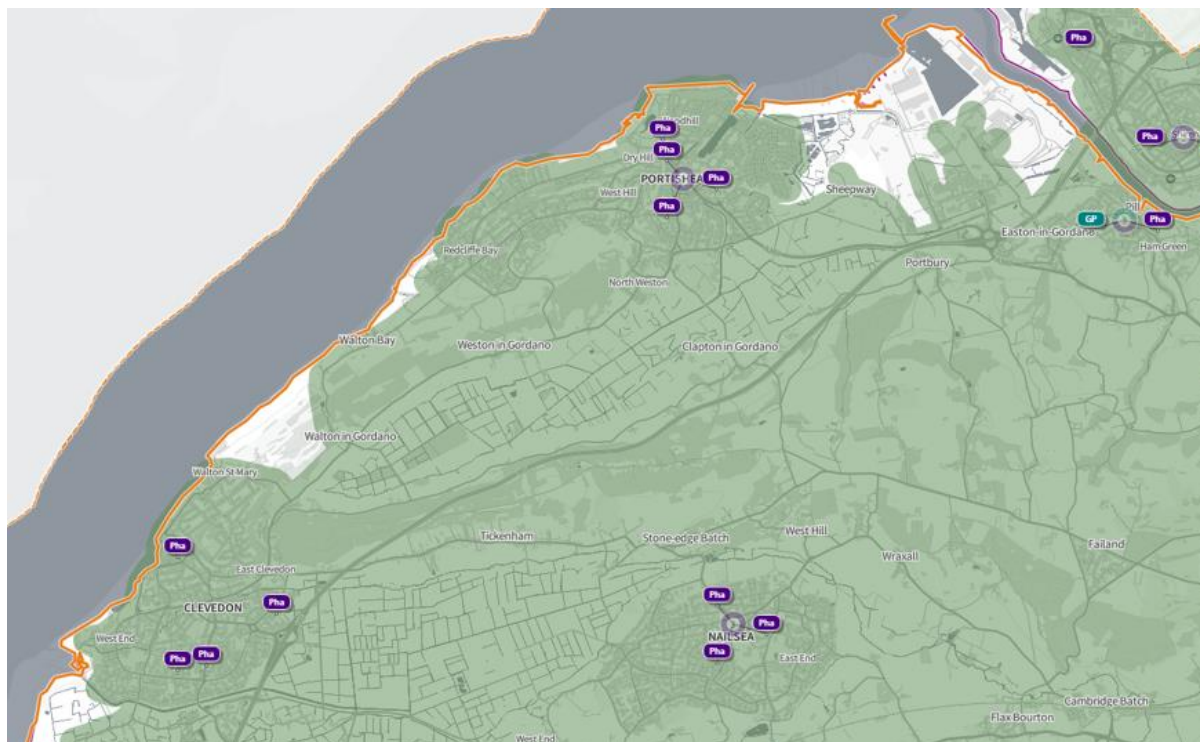
The number of items dispensed has decreased by 12.1% between 2018/19 and 2020/21 with the largest decrease occurring between 2019/20 and 2020/21.

The number of items dispensed per head in Clevedon, Nailsea and Portishead was higher than the South West and England average in 2018/19 and 2019/20 but fell below the South West average and England average in 2020/21. The number of pharmacies per 100,000 population remained above the South West average but below the England average between 2018/19 to 2020/21.

5.1.1 Access to essential services

The Clevedon, Nailsea and Portishead locality has good access to pharmacies, both within North Somerset and in Bristol to the north.

Figure 20: Clevedon, Nailsea, Portishead locality- Drive time of 10 minutes from pharmacies and dispensing practices

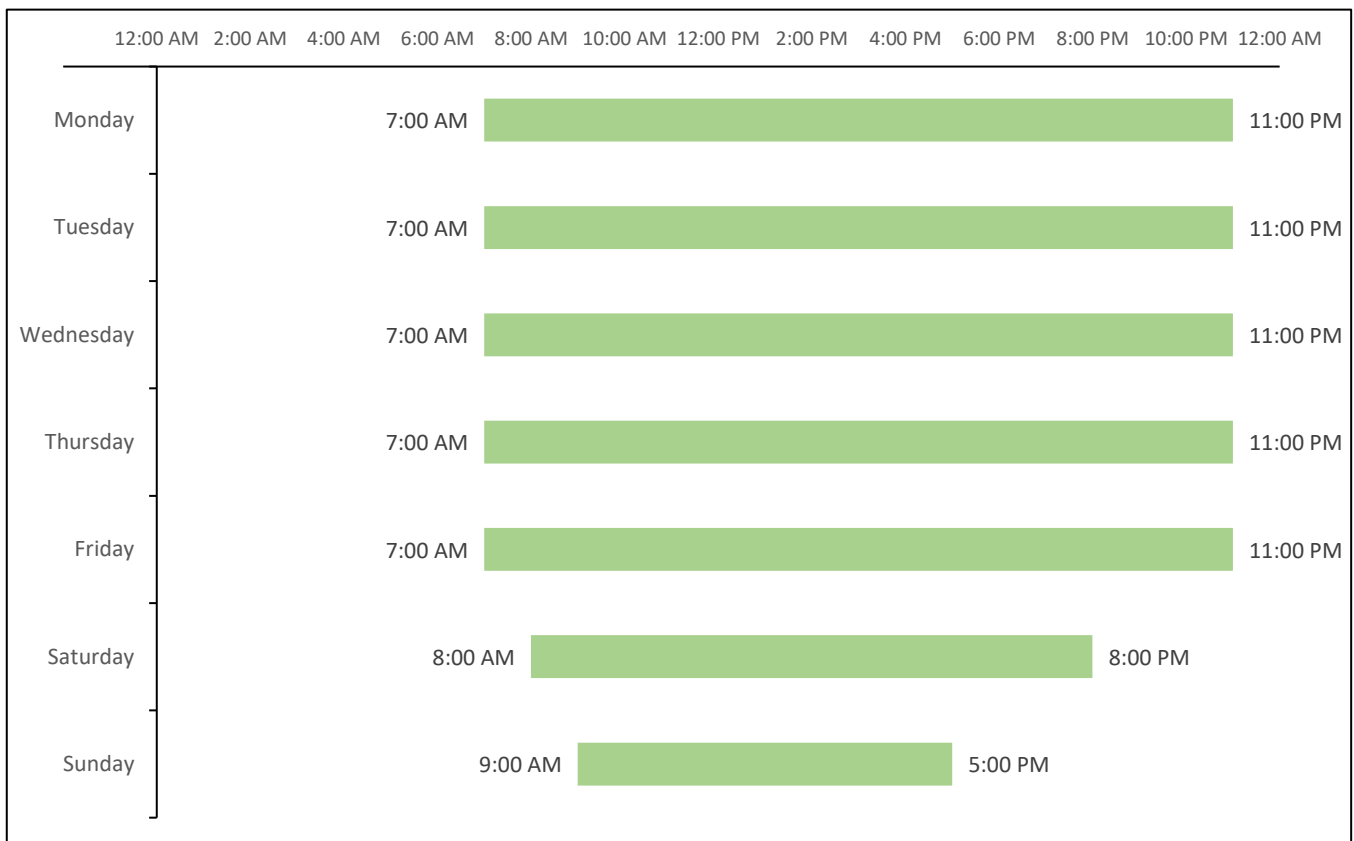


5.1.2 Opening hours

In this locality the opening hours (core and supplementary) give resident the following access:

- There are 3 pharmacies open 7 days per week.
- There are 6 pharmacies open from Monday to Saturday only
- There are 3 pharmacies open from Monday to Friday only
- There is 1 pharmacy open before 8 am from Monday to Friday
- There are 3 pharmacies open after 6.30pm from Monday to Friday.

The following chart shows the earliest opening time and latest closing time of pharmacies within the Clevedon, Nailsea and Portishead locality:



5.1.3 Access to advanced and enhanced services

Access to New Medicines Service (NMS)

In 2021/22, all 12 pharmacies had NMS accreditation providing a total of 1,594 NMSs in the first 9 months of the year. This is compared to the whole of 2020/21 where a total of 1,288 NMSs were provided.

Access to the ‘on demand availability of specialist medicines’ enhanced service

2 pharmacies provide the specialist medicines enhanced service.

Influenza vaccination advanced service

9 out of 12 pharmacies in Clevedon, Nailsea and Portishead provided the influenza vaccination advanced service in 2021/22. A total of 5,312 vaccinations were given according to the NHSBSAs Advanced Flu Vaccination Service report dataset for the 2021/22 flu season.

Stoma appliance customisation advanced service

2 pharmacies in Clevedon, Nailsea and Portishead provided stoma customisation in the first 9 months of 2021/22.

Appliance use review (AUR) advanced service

No pharmacies in Clevedon, Nailsea and Portishead provided this service. Many appliances will be dispensed by DACs based around the country, which may provide this service.

Other services (as of May 2022)

One pharmacy provided the Hepatitis-C Antibody Testing Service.

Eight pharmacies provided the Hypertension Case-Finding Service.

Two pharmacies provide the Stop Smoking Service.

Necessary services: statement of any gaps in provision

- No gap in current provision in the Clevedon, Nailsea and Portishead locality area

Other relevant services: current provision

- No gap in the provision of other relevant services

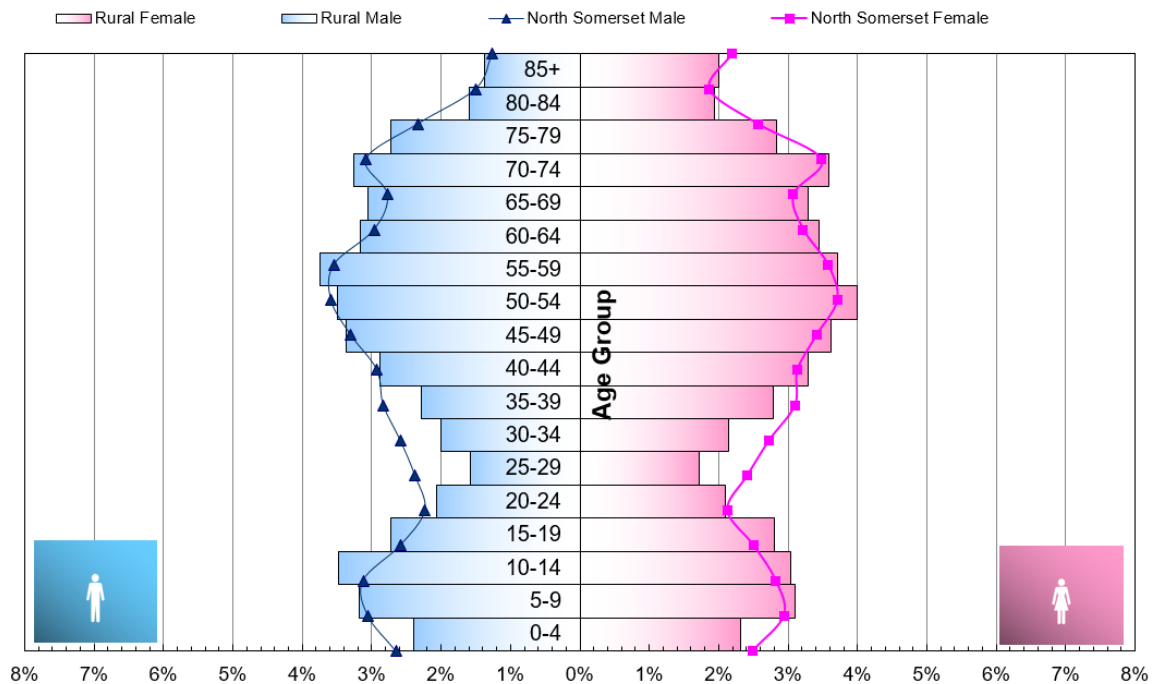
Improvements or better access: statement of any gaps in provision

- No gap in the provision or recommendation for improvements to improve access

5.2 Rural Locality

With a population of around 47,000 residents, the Rural locality is the smallest and contains only around a fifth of the North Somerset population. Residents have an older age profile than North Somerset with fewer young people.

Figure 21: Rural locality age profile



Life expectancy at birth is three years higher for males and females than the North Somerset averages with the lowest fertility in North Somerset.

Around 1 in 6 residents (17%) in this locality report a limiting long term illness, lower than the North Somerset average of 19%. Key health indicators, such as emergency admissions and deaths from coronary heart disease are lower than across North Somerset (see details in Appendix I: Locality health needs)

There are currently 8 pharmacies and one dispensing practice in the Rural locality as of March 2022 (overall rate of 19 per 100,000 population). Six pharmacies are owned by national pharmacy chains:

- 1 by Boots Pharmacy
- 1 by Lloyd's pharmacy
- 1 by Day Lewis Pharmacy

- 3 by Cohen’s Pharmacy

There are 2 other pharmacies not owned by national chains. There are no 100-hour pharmacies and eight 40-hour pharmacies in the Rural locality. All pharmacies had CPCS accreditation with 425 CPCS consultations provided in the first 9 months of 2021/22 (April to December).

Since the last PNA was published no new pharmacies have opened and no pharmacies have closed.

Over the last three years provision in the Rural locality has been as follows:

Year	Number of pharmacies	Pharmacies per 100,000 population	Items dispensed per head
2018/19	8	17.3	14.9
2019/20	8	17.3	15
2020/21	8	17.1	14.7
2021/22 (9 months)	8	17.1	-
North Somerset 2018/19	42	19.6	21.2
North Somerset 2019/20	41	19.1	21
North Somerset 2020/21	42	19.5	19.4
South West 2020/21	1065	18.8	16.8
England 2018/19	11997	21.4	18.1
England 2019/20	11938	21.2	18.4
England 2020/21	11748	20.8	18

Notes:

1. Populations are based ONS mid-year population estimates. The population for each financial year is taken as the mid-year estimate for the first of the two years that make up the financial year. For example, for 2019/20 the population is taken as the mid-year estimate for 2019.
2. Mid-year population estimates were not available for 2021 at the time of writing
3. Number of pharmacies and total items dispensed in England and South West England in 2020/21 are taken from Supporting Tables from NHSBSA found at: <https://www.nhsbsa.nhs.uk/statistical-collections/general-pharmaceutical-services-england/general-pharmaceutical-services-england-201516-202021>
4. All pharmacy numbers include both community pharmacies and DACs

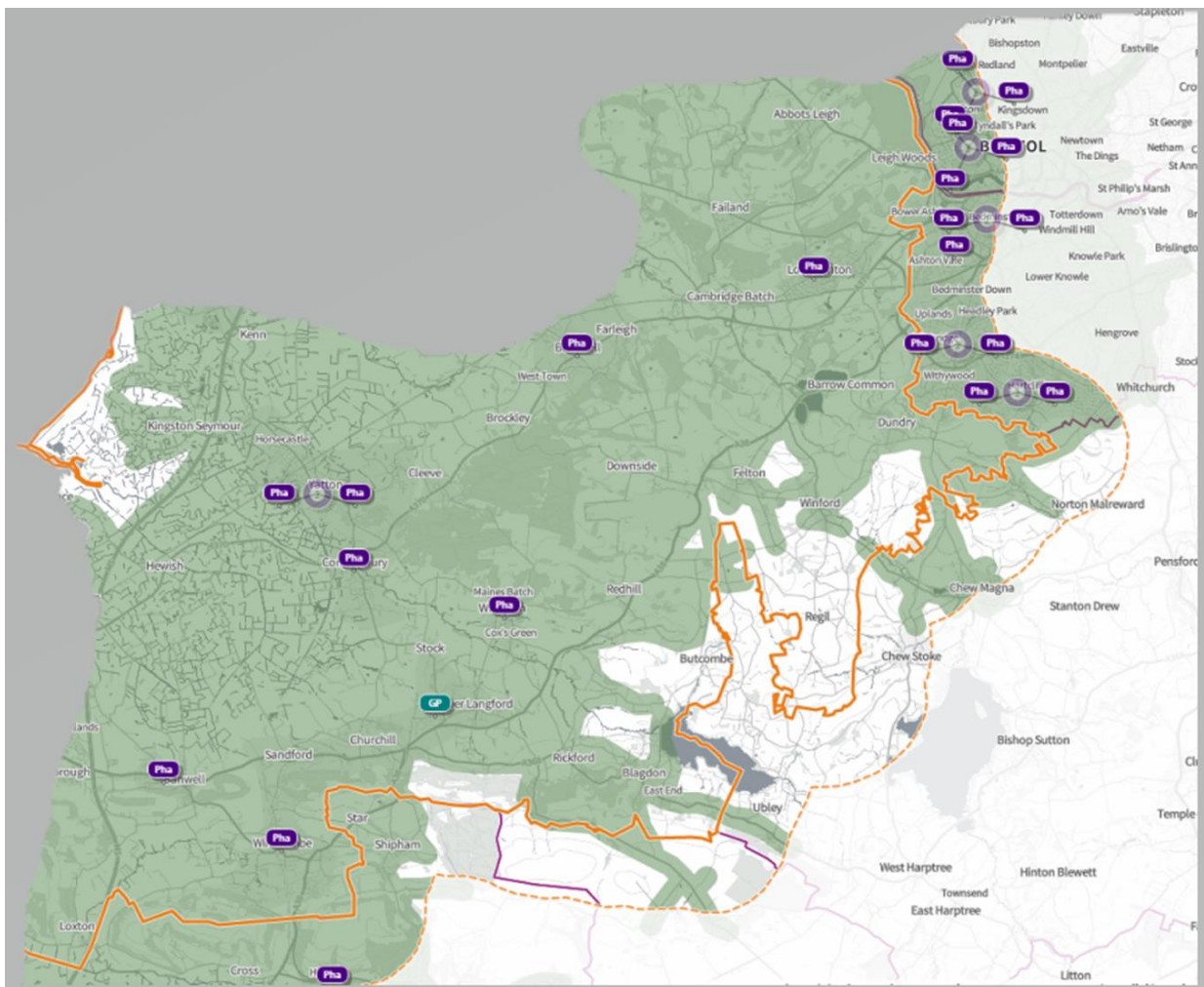
The number of pharmacies in Rural North Somerset has stayed the same between 2018/19 and 2020/21. The number of items dispensed each year has also stayed roughly similar from 2018/19 to 2020/21.

Both Item dispensing per head and the number of pharmacies per 100,000 population in Rural North Somerset are lower than both the South West averages and the England averages from 2018/19 to 2020/21.

5.2.1 Access to essential services

The Rural locality has the least access to pharmacies but benefits from a dispensing practice in Langford.

Figure 22: Rural locality- Drive time of 10 minutes from pharmacies and dispensing practices



5.2.2 Opening hours

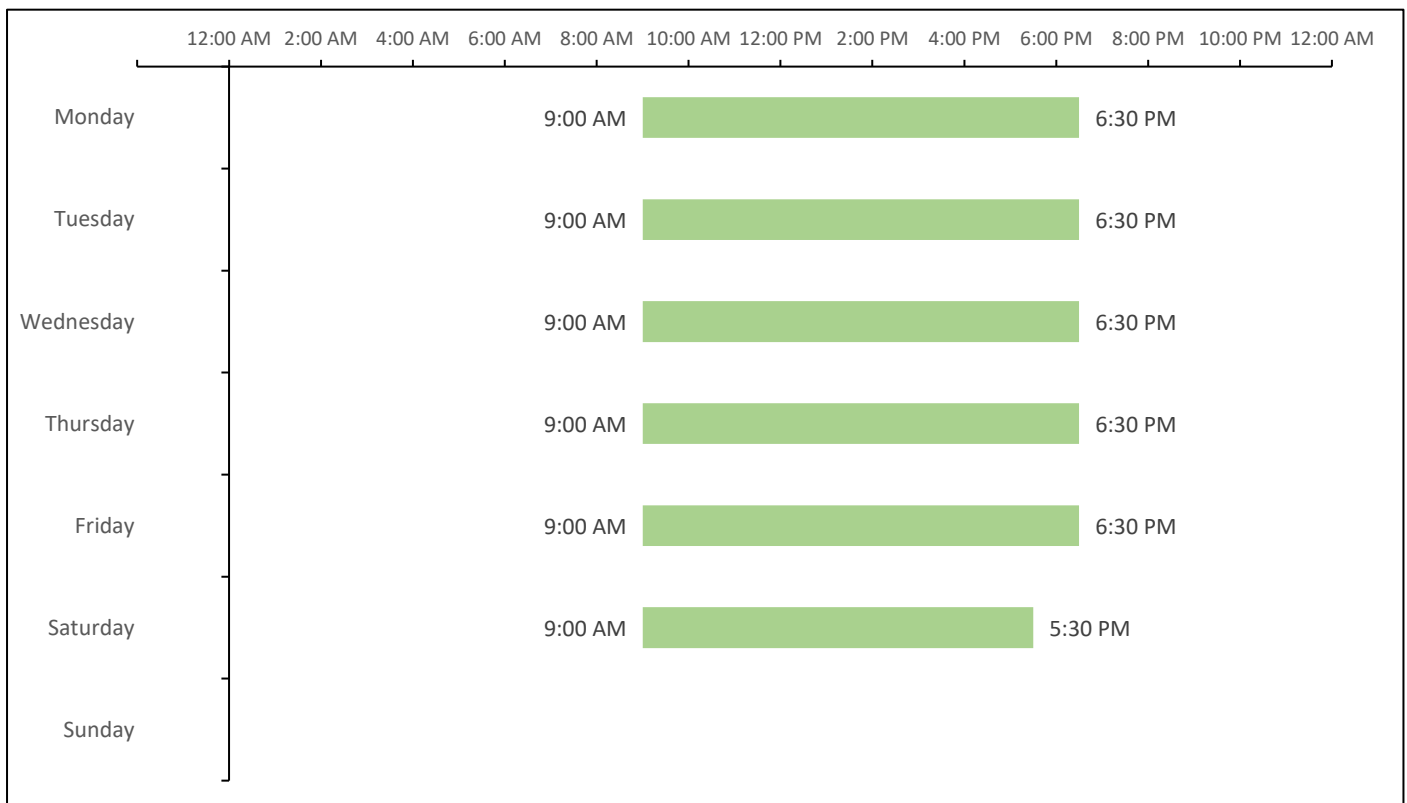
In this locality the opening hours (core and supplementary) give resident the following access:

- There are currently no pharmacies in Rural North Somerset that are open 7 days per week.
- There are 6 pharmacies open Monday to Saturday.

- There are no pharmacies open before 9am on Monday to Friday.
- No pharmacy is open later than 6.30pm

Figure 22 below shows the earliest opening hours and latest closing hours in Rural North Somerset locality.

Figure 23: Opening hours in the rural locality



5.2.3 Access to advanced and enhanced services

Access to New Medicines Service (NMS)

8 pharmacies have NMS accreditation, with a total of 957 NMSs provided in the first 9 months of 2021/22. This is compared to 2020/21 when a total of 959 NMSs undertaken.

Access to the ‘on demand availability of specialist medicines’ enhanced service

No pharmacies in Rural North Somerset deliver the specialist medicine’s enhanced service.

Influenza vaccination advanced service

6 out of 8 pharmacies in Rural North Somerset delivered the Influenza vaccination advanced service. Based on data from NHSBSA's Advanced Flu Vaccination Service report data a total of 2,746 vaccinations were given in the 2021/22 flu season from pharmacies within this locality in the BNSSG STP.

Stoma appliance customisation advanced service

No pharmacies in Rural locality provide this service as of January 2022.

Appliance use review (AUR) advanced service

No pharmacies in Rural locality provide this service. Many appliances will be dispensed by DACs based around the country, which may provide this service.

Other services (as of May 2022)

Six pharmacies provided the Hypertension Case-Finding Service.

One pharmacy provides the Stop Smoking Service.

No pharmacies provide the Hepatitis-C Antibody Testing Service.

Necessary services: statement of any gaps in provision

- No gap in current provision in the rural locality area

Other relevant services: current provision

- No gap in the provision of other relevant services

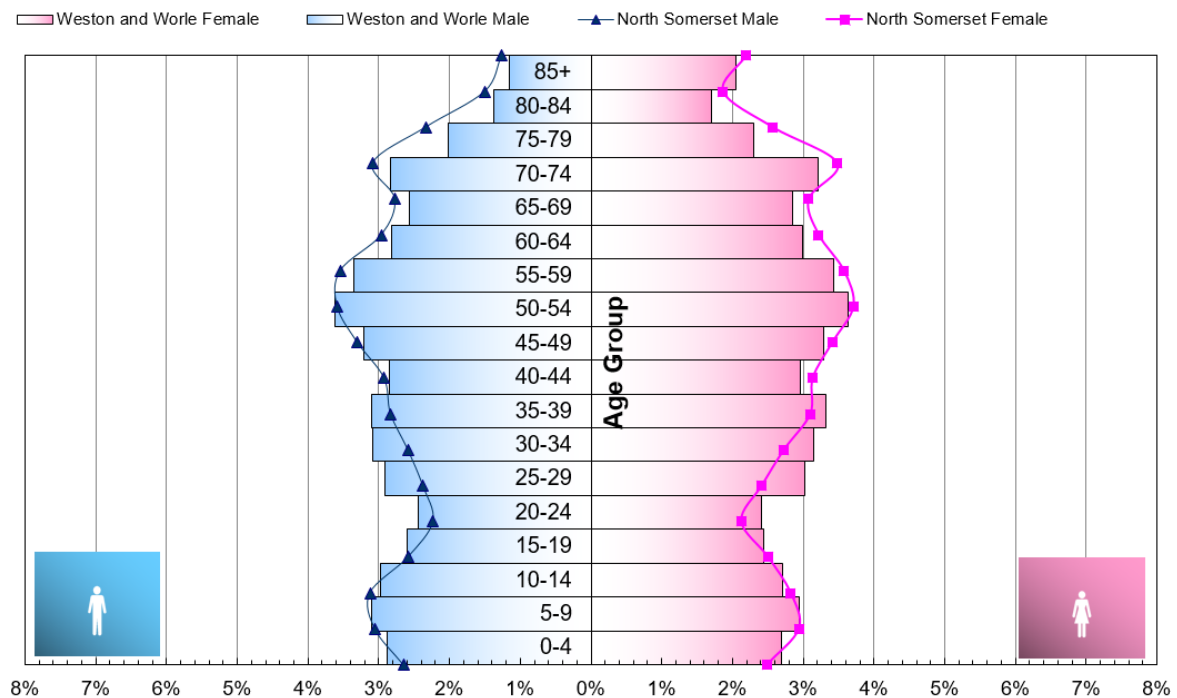
Improvements or better access: statement of any gaps in provision

- There is no Sunday access and some improvements may be made if NHS England was commissioning or directing existing pharmacies to open additional hours on Sundays, without the need for a new pharmacy.

5.3 Weston and Worle Locality

With a population of around 97,000 residents, the Weston and Worle locality is the largest and most urban locality in North Somerset. It has a younger age profile with more residents being aged 20-39 than the rest of North Somerset. This locality also has the highest fertility rate in North Somerset.

Figure 24: Age profile Weston and Worle locality



The Weston and Worle locality contains the most deprived areas of North Somerset and residents have the lowest life expectancy in North Somerset.

More than 1 in 5 residents (22%) in this locality report a limiting long term illness, higher than the North Somerset average of 19%. Key health indicators, such as emergency admissions and deaths from coronary heart disease are higher than across North Somerset (see details in Appendix I: Locality health needs).

There are currently 20 pharmacies in Weston and Worle as of March 2022 (overall rate of 21 per 100,000 population)

Thirteen pharmacies are owned by national pharmacy chains:

- 4 by Boots Pharmacy
- 4 by Lloyd's pharmacy

- 1 by Day Lewis Pharmacy
- 1 by Morrison's Pharmacy
- 1 by ASDA Pharmacy
- 1 by Bestway (Well) Pharmacy
- 1 by Tesco Pharmacy

There are 7 other pharmacies in Weston and Worle. There are five 100-hour pharmacies and fifteen 40-hour pharmacies in total. All pharmacies are CPCS accredited providing a total of 2,823 CPCS consultations in the first 9 months of 2021/22 (April to December).

Since the last PNA was published 1 pharmacy has closed in Worle and 1 new pharmacy has opened in Haywood Village.

Over the last three years provision in Weston and Worle has been as follows:

Year	Number of pharmacies	Pharmacies per 100,000 population	Items dispensed per head
2018/19	20	20.9	25.8
2019/20	19	19.6	25.5
2020/21	20	20.7	23.7
2021/22 (9 months)	20	20.7	-
North Somerset 2018/19	42	19.6	21.2
North Somerset 2019/20	41	19.1	21
North Somerset 2020/21	42	19.5	19.4
South West 2020/21	1065	18.8	16.8
England 2018/19	11997	21.4	18.1
England 2019/20	11938	21.2	18.4
England 2020/21	11748	20.8	18

Notes:

1. Populations are based ONS mid-year population estimates. The population for each financial year is taken as the mid-year estimate for the first of the two years that make up the financial year. For example, for 2019/20 the population is taken as the mid-year estimate for 2019.
2. Mid-year population estimates were not available for 2021 at the time of writing
3. Number of pharmacies and total items dispensed in England and South West England in 2020/21 are taken from Supporting Tables from NHSBSA found at: <https://www.nhsbsa.nhs.uk/statistical-collections/general-pharmaceutical-services-england/general-pharmaceutical-services-england-201516-202021>
4. All pharmacy numbers include both community pharmacies and DACs

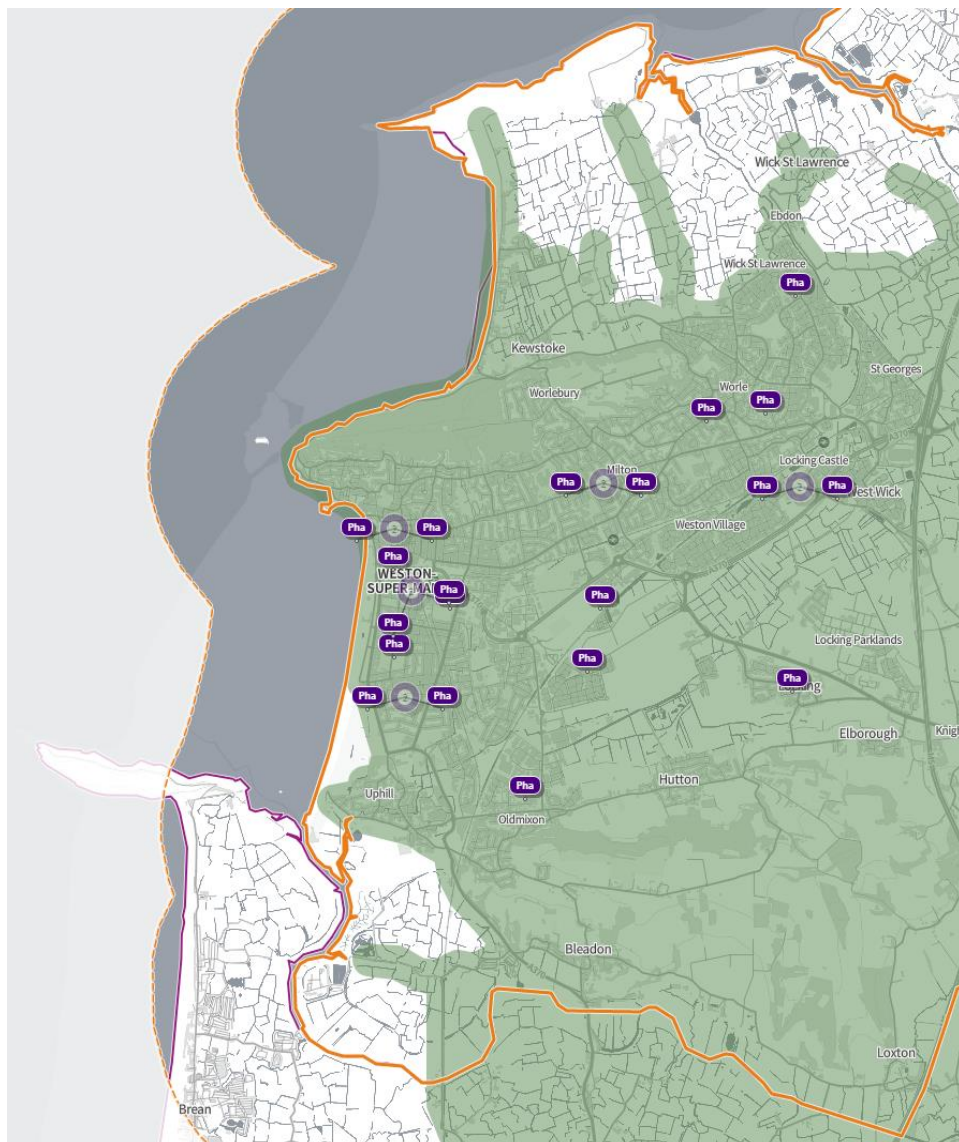
The number of items dispensed has reduced by 7.3% between 2018/19 and 2020/21. The largest annual fall in dispensing occurred between 2019/20 and 2020/21, a 7.1% reduction in dispensing.

Items dispensed per head is far higher in Weston and Worle than the South West and England average. There is a higher number of pharmacies per 100,000 population than the South West average, and in 2020/21, the Weston and Worle average was similar to the England average.

5.3.1 Access to essential services

Residents in the Weston and Worle locality have good access to pharmacies, particularly late in the evenings and at weekends.

Figure 25: Weston and Worle locality-Drive time of 10 minutes from pharmacies and dispensing practices

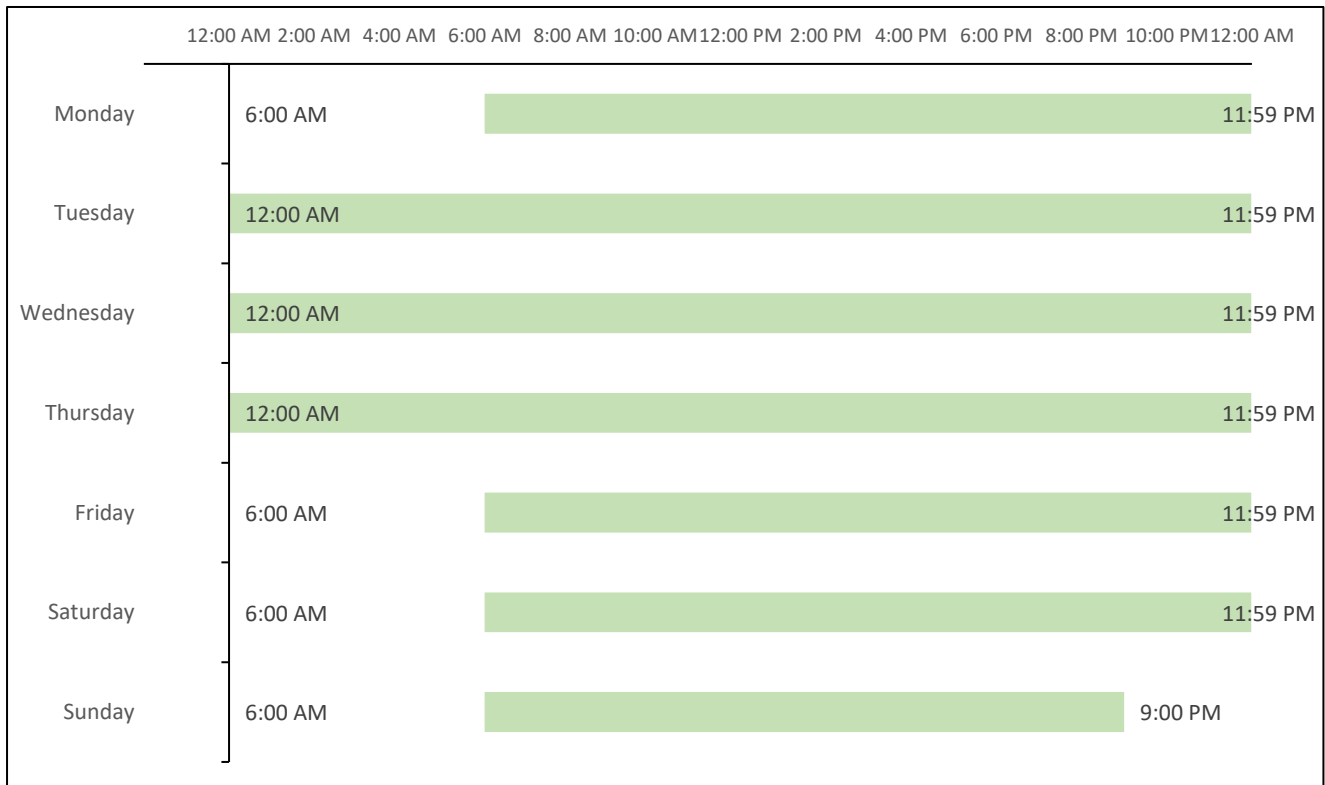


5.3.2 Opening hours

In this locality the opening hours (core and supplementary) give resident the following access:

- 5 pharmacies are open 7 days a week
- 12 pharmacies are open on Monday to Saturday only
- 1 pharmacy is open Sunday to Friday only
- 3 pharmacies are open before 8am on every day from Monday to Friday. A further 2 pharmacies are open before 8am on every day from Tuesday to Friday.
- 7 pharmacies are open after 6.30pm on every day from Monday to Friday.

The following chart shows the earliest opening hours and the latest closing hours for the Weston and Worle area:



5.3.3 Access to advanced and enhanced services

Access to New Medicines Service (NMS)

20 pharmacies in Weston and Worle had NMS accreditation in 2021/22. Over the first 9-month period of 2021/22, 2,550 NMSs were undertaken. This is compared to 2020/21 where a total of 1,621 NMSs undertaken.

Access to the 'on demand availability of specialist medicines' enhanced service

In 2021/22, two pharmacies in Weston and Worle have provided the specialist medicines advanced service.

Influenza vaccination advanced service

19 out of 20 pharmacies delivered the NHS vaccination advanced service in 2021/22. Using data from the NHSBSA Advanced Flu Service report dataset for the 2021/22 flu season, a total of 10,460 vaccinations were given.

Stoma appliance customisation advanced service

Four pharmacies provide this service as of 2021/22.

Appliance use review (AUR) advanced service

No pharmacies in Weston and Worle provided this service. Many appliances will be dispensed by DACs based around the country, which may provide this service.

Other services (as of May 2022)

No pharmacies provide the Hepatitis-C Antibody Testing Service.

Fifteen pharmacies provided the Hypertension Case-Finding Service.

Two pharmacies provide the Stop Smoking Service.

Necessary services: statement of any gaps in provision

- No gap in current provision in the Weston and Worle locality area

Other relevant services: current provision

- No gap in the provision of other relevant services

Improvements or better access: statement of any gaps in provision

- No gap in the provision or recommendation for improvements to improve access

6 Public engagement in pharmaceutical needs assessments

A formal public consultation took place from 1st of April to 12th of June 2022. This allowed for extra time beyond the statutory consultation period of 60 days to take account of bank holidays.

The questions covered:

- Do you think that the information contained within the draft PNA accurately reflects the current pharmacy and prescription dispensing services available in North Somerset?
- Do you think that the pharmaceutical needs of the population of North Somerset have been adequately reflected in the draft PNA document?
- Do you feel that the pharmaceutical needs of the population of North Somerset have been adequately reflected in the draft PNA?
- The draft PNA does not identify any gaps in the provision of necessary services. Do you agree with this statement?
- Do you agree with the conclusions contained within the draft PNA?

A wide range of stakeholders, patient groups and the public were encouraged to comment on the draft PNA as well as statutory consultees.

Statutory consultees include:

- Avon Local Pharmaceutical Committee (LPC)
- Avon Local Medical Committee (LMC)
- Somerset LPC
- Somerset LMC
- NHS England and NHS Improvement
- Bristol Health & Wellbeing Board
- Bath & North East Somerset Health & Wellbeing Board
- Somerset Health & Wellbeing Board
- All community pharmacy contractors in North Somerset
- All dispensing doctor surgeries in North Somerset
- Parish and Town Councils in North Somerset
- North Bristol NHS Trust

- Sirona Care & Health
- South Western Ambulance Service NHS Foundation Trust (SWASFT)
- Avon and Wiltshire Mental Health Trust
- University Hospital Bristol and Weston NHS Foundation Trust
- Healthwatch BNSSG

6.1 Results of the public consultation

Although the results of the consultation may not be statistically representative of the view of North Somerset residents due to the consultation methodology, the level of response and information gathered provide a useful indicator of wider opinion.

There were a total of 13 responses (up from 3 in the 2018-2021 PNA) to the public consultation.

Based on the consultation findings the North Somerset PNA steering group do not feel there is a need to alter the findings and recommendations of this report, but acknowledge the importance that delivery services play in meeting need, particularly in rural areas.

Other consultation feedback that did not fall within the remit of the PNA has been discussed and circulated to relevant departments and partner organisations for consideration and further action.

The steering group would like to thank all individuals and organisations who took the time to respond to the consultation for their time and input.

7 Conclusion

7.1 Necessary services: statement of any gaps in current provision

Given the findings of this needs assessment, the steering group is satisfied that North Somerset has good coverage of essential pharmaceutical services through community pharmacies and dispensing doctors.

This conclusion is reached based on travel time analysis using car driving times, public transport and walk times. The PNA steering group acknowledges and accepts that access to a car is a requirement for this conclusion to hold in the most rural areas. Prescription delivery services are available although this is provided on a voluntary basis and could be withdrawn. This service has been shown in the current and previous consultations as highly valued by residents.

7.2 Necessary services: statement of any gaps in future provision

A previously identified need for a pharmacy in the large housing development in Weston-super-Mare has been met with the opening of a pharmacy in Haywood Village. The current trajectory of housing development does not show a requirement for further provision within the time frame of this PNA.

7.3 Improvements and better access: statement of any gaps in provision

Opening times analysis by localities suggest there is a potential to secure better access to pharmacies on weekends in the Rural locality which could be remedied by NHS England commissioning or directing existing pharmacies to open additional hours on Sundays, without the need for any new pharmacies.

8 Table of Figures

Figure 1: Resident population figures by locality area, North Somerset, 2020	7
Figure 2: The three locality areas with pharmacies highlighted.....	8
Figure 3: Pharmacy and dispensing GP practice locations in North Somerset in March 2022	10
Figure 4: Primary Care priorities for BNSSG.....	15
Figure 5: Map of North Somerset area.....	17
Figure 6: Population breakdown by gender for North Somerset and England, 2020	18
Figure 7: Percentage of the population from a Black or Minority Ethnic Group, 2011	19
Figure 8: Percentage of households who own a car by locality area, 2011	20
Figure 9: Deprivation (IMD 2019) in North Somerset	22
Figure 10: Population projections (2018-2043) for North Somerset	23
Figure 11: Building development trajectory for Weston Villages	26
Figure 12: Main causes of death in North Somerset	27
Figure 13: Premature deaths (<75 years) by locality (2015-2019)	28
Figure 14: Pharmacy and dispensing GP practice locations	29
Figure 15: North Somerset pharmacies and dispensing practices by population density with 1 mile (1.6km) buffer.....	31
Figure 16: Pharmacies and dispensing practices within 10 minute car journey, North Somerset.....	32
Figure 17: Distribution of pharmacies in each locality area	34
Figure 18: Pharmacy opening hours by locality.....	37
Figure 19: Age profile of Clevedon, Nailsea and Portishead Locality	38
Figure 20: Clevedon, Nailsea, Portishead locality- Drive time of 10 minutes from pharmacies and dispensing practices	40
Figure 21: Rural locality age profile	43
Figure 22: Rural locality- Drive time of 10 minutes from pharmacies and dispensing practices.....	45
Figure 23: Opening hours in the rural locality	46
Figure 24: Age profile Weston and Worle locality.....	48
Figure 25: Weston and Worle locality-Drive time of 10 minutes from pharmacies and dispensing practices.....	51
Figure 26: Distance from pharmacies.....	61

Figure 27: Walking by time	61
Figure 28: Cycling by distance	62
Figure 29: Public transport to sites (weekday morning, afternoon and evening)	62
Figure 30: Public transport from sites (weekday morning, afternoon and evening) ..	63
Figure 31: Car drive times	63
Figure 32: Car driving time (rush hour).....	64

Appendix I: Locality health needs⁹

Locality values have been highlighted in different colours as described below. Red values don't necessarily equal worse outcomes, though this is often the case.

Red highlights values that are more than both England and North Somerset

Yellow highlights values where one value is less and one value is more than England and North Somerset

Green highlights value that are lower than both England and North Somerset.

Topic Indicator	England	North Somerset	Clevedon, Nailsea and Portishead	Rural	Weston and Worle
Behavioural risk factors and child health					
A&E attendances aged under 5 years old, crude rate, Persons, 0-4 yrs	642.52	500.01	448.6	447.1	555.3
Deliveries to teenage mothers, Female, 12-17 yrs	0.73	0.68	0.0	0.0	1.8
Emergency hospital admissions for injuries in 15-24 years old, crude rate, Persons, 15-24 yrs	132.06	146.45	129.4	126.9	165.1
Emergency hospital admissions for injuries in under 15 years old, crude rate, Persons, <15 yrs	97.75	94.37	92.6	91.3	97.7
Emergency hospital admissions for injuries in under 5 years old, crude rate, Persons, 0-4 yrs	12.34	11.79	10.3	12.1	13.4
Emergency hospital admissions in under 5 years old, crude rate, Persons, 0-4 yrs	162.09	130.72	99.6	107.4	160.8
General fertility rate: live births per 1,000 women aged 15-44 years. five year pooled, Female, 15-44 yrs	60.63	61.39	59.8	55.6	64.7
Low birth weight of live babies, five year pooled 2015-2019, Persons, 0 yrs	6.93	4.89	4.5	4.1	5.5
Reception: Prevalence of obesity (including severe obesity), 3-years data combined, Persons, 4-5 yrs	9.67	8.65	7.3	6.7	11.6
Reception: Prevalence of overweight (including obesity), 3-years data combined, Persons, 4-5 yrs	22.60	23.21	20.2	20.1	27.0
Smoking prevalence at age 15 - regular or occasional smokers (modelled estimates), Persons, 15 yrs	8.17	8.81	9.7	9.9	7.6
Smoking prevalence at age 15 - regular smokers (modelled estimates), Persons, 15 yrs	5.42	5.12	5.8	6.0	4.2
Year 6: Prevalence of obesity (including severe obesity), 3-years data combined, Persons, 10-11 yrs	20.44	15.48	12.7	12.8	18.9
Year 6: Prevalence of overweight (including obesity), 3-years data combined, Persons, 10-11 yrs	34.57	28.08	24.4	23.9	32.5
Disease and poor health					
Emergency hospital admissions for all causes, all ages, standardised admission ratio, Persons, All ages	100.00	87.15	79.0	71.2	97.8
Emergency hospital admissions for Chronic Obstructive Pulmonary Disease (COPD), standardised admission ratio, Persons, All ages	100.00	78.58	63.3	44.8	102.5
Emergency hospital admissions for coronary heart disease, standardised admission ratio, Persons, All ages	100.00	84.54	77.9	68.7	96.3
Emergency hospital admissions for hip fracture in persons 65 years and over, standardised admission ratio, Persons, 65+ yrs	100.00	99.51	94.0	90.9	96.7
Emergency hospital admissions for Myocardial Infarction (heart attack), standardised admission ratio, Persons, All ages	100.00	92.37	81.9	75.4	106.0
Emergency hospital admissions for stroke, standardised admission ratio, Persons, All ages	100.00	94.99	84.2	86.6	104.5
Hospital stays for self harm, standardised admission ratio, Persons, All ages	100.00	125.45	115.0	68.8	143.9
Incidence of all cancers, standardised incidence ratio, Persons, All ages	100.00	103.39	101.8	100.5	106.3
Incidence of breast cancer, standardised incidence ratio, Female, All ages	100.00	109.17	98.9	116.1	114.1
Incidence of colorectal cancer, standardised incidence ratio, Persons, All ages	100.00	103.33	103.6	94.9	107.6
Incidence of lung cancer, standardised incidence ratio, Persons, All ages	100.00	81.01	80.0	62.2	92.2
Incidence of prostate cancer, standardised incidence ratio, Male, All ages	100.00	109.31	113.8	121.4	98.6
Percentage of people who reported having a limiting long-term illness or disability, Persons, All ages	17.64	19.12	17.1	16.7	21.9

Topic Indicator	England	North Somerset	Clevedon, Nailsea and Portishead	Rural	Weston and Worle
Life expectancy and causes of death					
Deaths from all cancer, all ages, standardised mortality ratio, Persons, All ages	100.00	94.00	91.1	87.2	100.1
Deaths from all cancer, under 75 years, standardised mortality ratio (SMR), Persons, <75 yrs	100.00	92.00	91.1	75.6	101.9
Deaths from all causes, all ages, standardised mortality ratio, Persons, All ages	100.00	95.39	86.3	84.6	108.6
Deaths from all causes, under 75 years, standardised mortality ratio, Persons, <75 yrs	100.00	87.84	75.6	67.6	109.1
Deaths from causes considered preventable, under 75 years, standardised mortality ratio, Persons, <75 yrs	100.00	81.86	67.5	57.8	107.0
Deaths from circulatory disease, all ages, standardised mortality ratio, Persons, All ages	100.00	85.55	81.1	74.6	94.9
Deaths from circulatory disease, under 75 years, standardised mortality ratio, Persons, <75 yrs	100.00	85.01	75.5	58.7	107.6
Deaths from coronary heart disease, all ages, standardised mortality ratio, Persons, All ages	100.00	78.62	71.1	70.3	89.2
Deaths from respiratory diseases, all ages, standardised mortality ratio, Persons, All ages	100.00	89.62	69.9	73.8	114.3
Deaths from stroke, all ages, standardised mortality ratio, Persons, All ages	100.00	91.77	87.2	78.5	102.2
Life expectancy at birth, (upper age band 90+), Female, All ages	83.25	84.09	86.1	86.6	83.6
Life expectancy at birth, (upper age band 90+), Male, All ages	79.66	80.31	81.8	82.9	79.4
Our community					
Black and Minority Ethnic (BME) Population, Persons, All ages	14.58	2.71	2.2	2.4	3.3
Child Poverty, Income deprivation affecting children index (IDACI), Persons, <16 yrs	17.08	12.44	6.7	7.7	18.9
Estimated percentage of households that experience fuel poverty, 2018	10.25	7.56	6.1	8.4	8.3
Households with overcrowding based on overall room occupancy levels, Persons, All ages	8.74	4.61	3.9	2.5	6.1
Income deprivation, English Indices of Deprivation, Persons, All ages	12.86	10.05	5.9	6.1	15.1
Index of Multiple Deprivation Score, Persons, All ages	21.72	15.83	9.0	8.9	22.3
Long-Term Unemployment- rate per 1,000 working age population, Persons, 16-64 yrs	3.16	0.68	0.3	0.2	0.8
Older people in poverty: Income deprivation affecting older people Index (IDAOP), Persons, 60+ yrs	14.20	10.38	7.3	6.8	15.0
Older people living alone, % of people aged 65 and over who are living alone, Persons, 65+ yrs	31.47	29.37	29.1	25.3	31.8
Percentage of population whose ethnicity is not 'White UK', Persons, All ages	20.25	5.93	4.8	5.1	7.2
Percentage of the total resident population aged 85 and over, Persons, 85+ yrs	2.48	3.43	3.7	3.3	3.2
Percentage of the total resident population who are 0-15 years of age, Persons, <16 yrs	19.22	18.19	17.6	18.6	18.4
Percentage of the total resident population who are 0-4 years of age, Persons, 0-4 yrs	5.86	5.26	5.0	4.7	5.7
Percentage of the total resident population who are 16-24 years of age, Persons, 16-24 yrs	10.58	8.42	7.7	8.4	9.0
Percentage of the total resident population who are 25-64 years of age, Persons, 25-64 yrs	51.81	49.38	49.0	47.4	50.6
Percentage of the total resident population who are 50-64 years of age, Persons, 50-64 yrs	18.99	20.39	20.7	21.5	19.6
Percentage of the total resident population who are 5-15 years of age, Persons, 5-15 yrs	13.35	12.93	12.6	13.9	12.7
Percentage of the total resident population who are 65 and over, Persons, 65+ yrs	18.39	24.01	25.7	25.6	22.0
Proficiency in English, % of people who cannot speak English well or at all, Persons, 3+ yrs	1.65	0.41	0.2	0.2	0.7
Small area population density, Persons, All ages	432.05	575.33	882.9	211.3	1235.4
Unemployment (% of the working age population claiming out of work benefit), Persons, 16-64 yrs	2.80	2.07	1.1	1.1	3.2

⁹ <https://fingertips.phe.org.uk/profile/local-health> Accessed 04/01/2022

Appendix II: Travel time maps

Figure 26: Distance from pharmacies

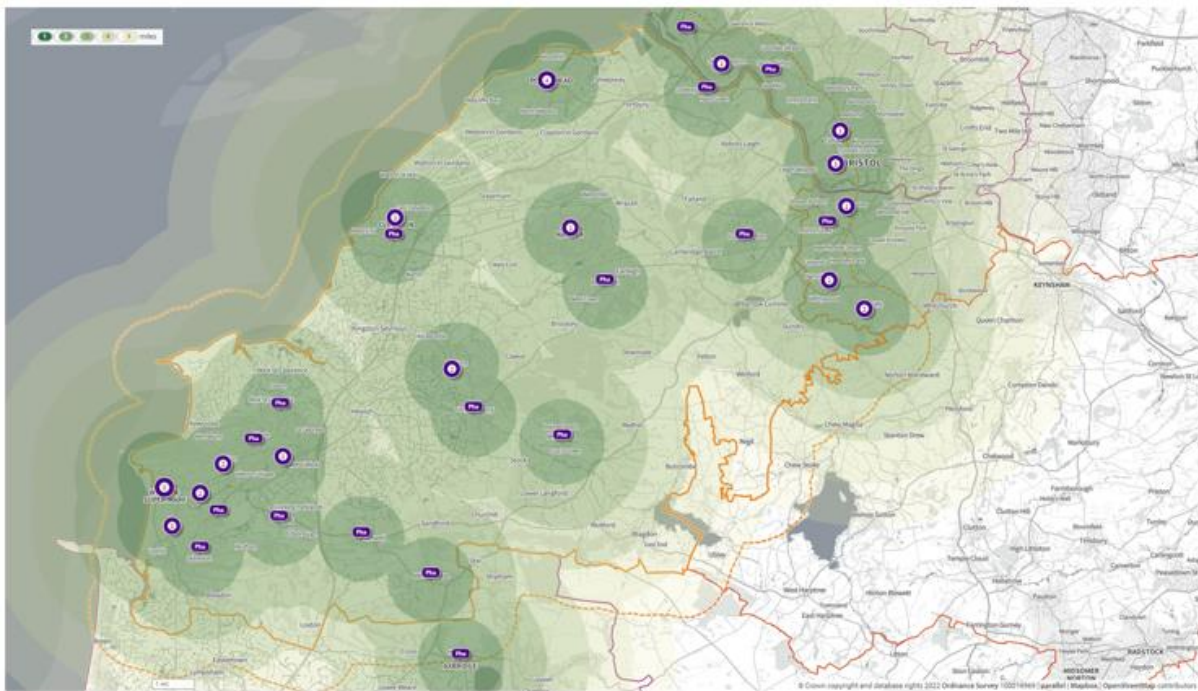


Figure 27: Walking by time

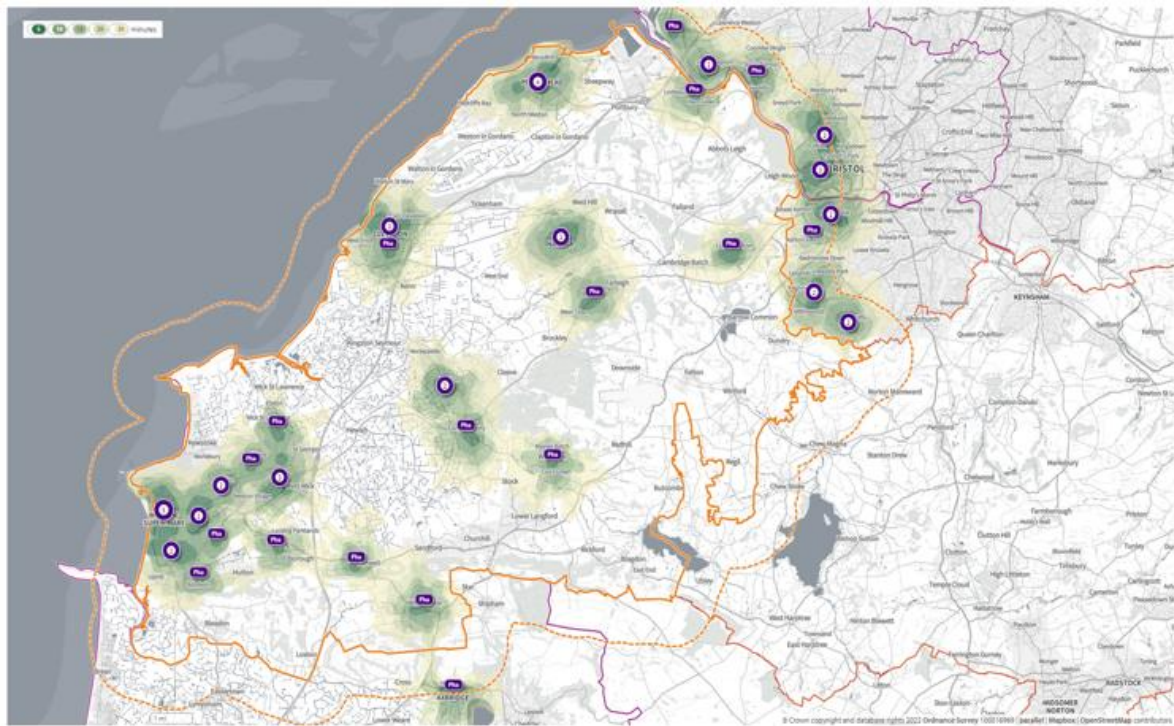


Figure 28: Cycling by distance

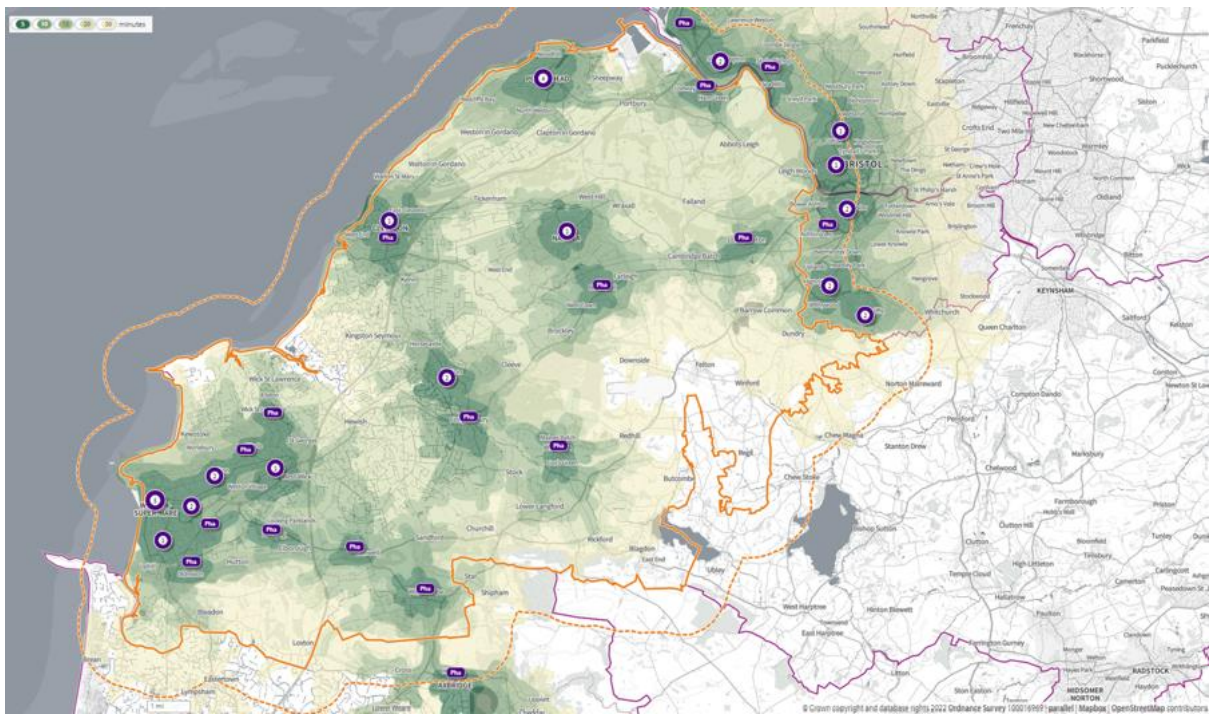


Figure 29: Public transport to sites (weekday morning, afternoon and evening)

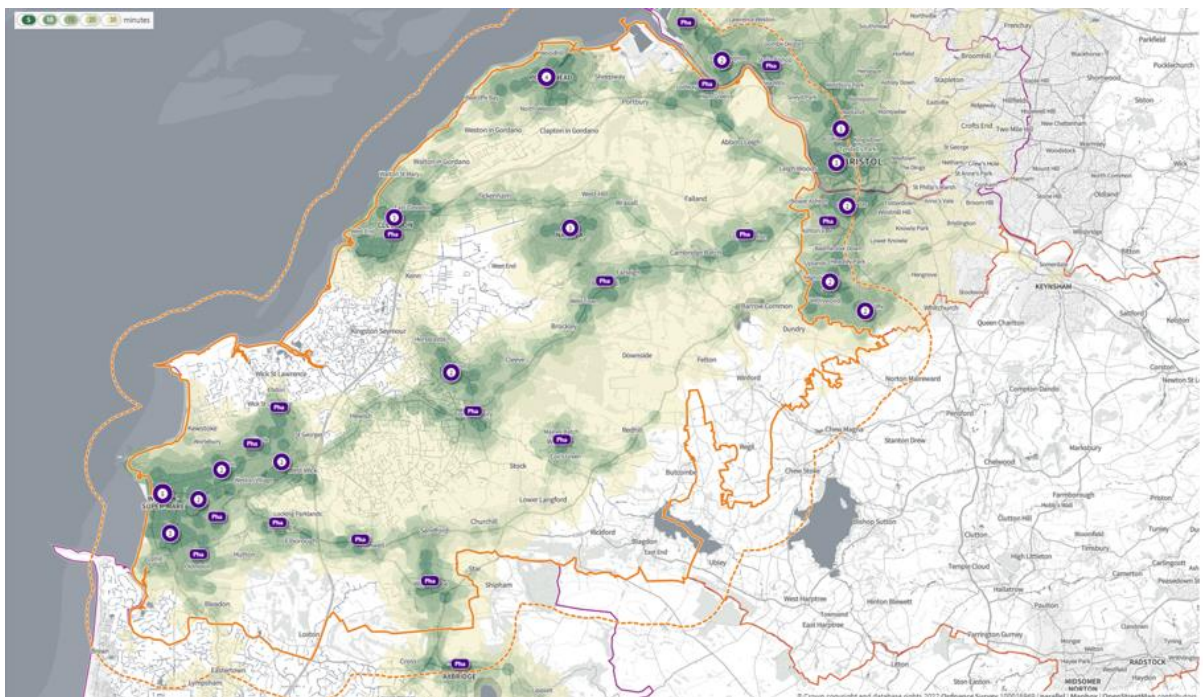


Figure 30: Public transport from sites (weekday morning, afternoon and evening)

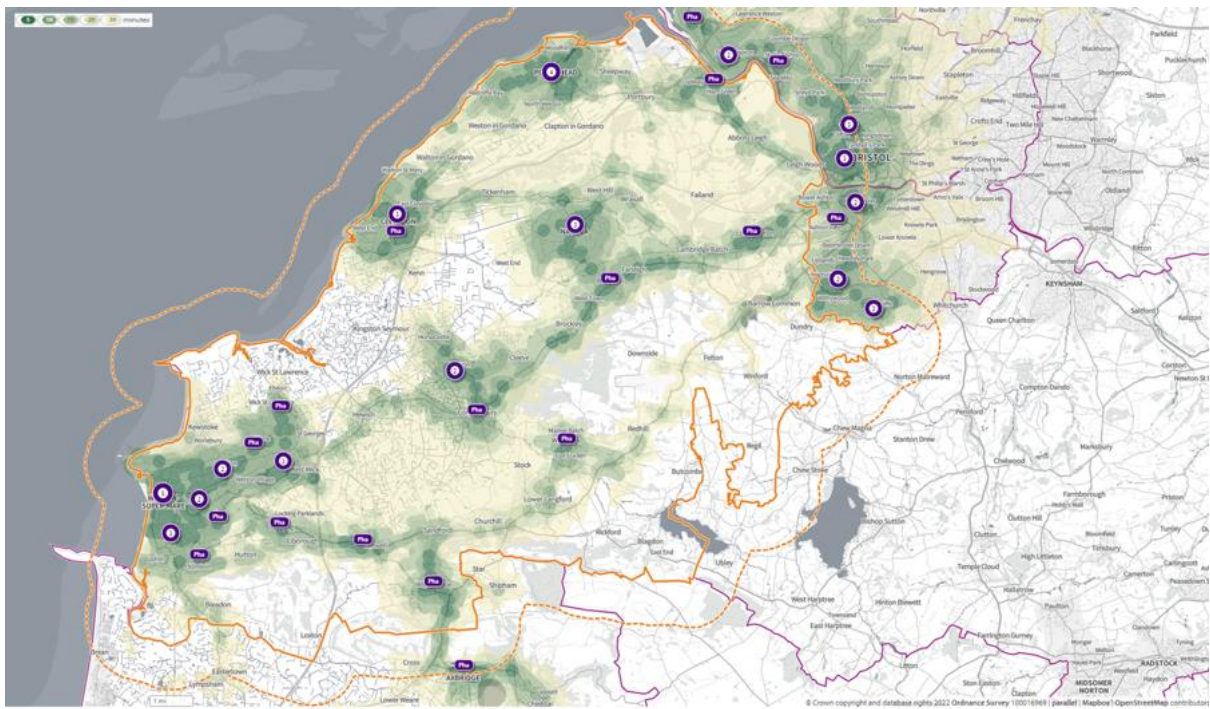


Figure 31: Car drive times

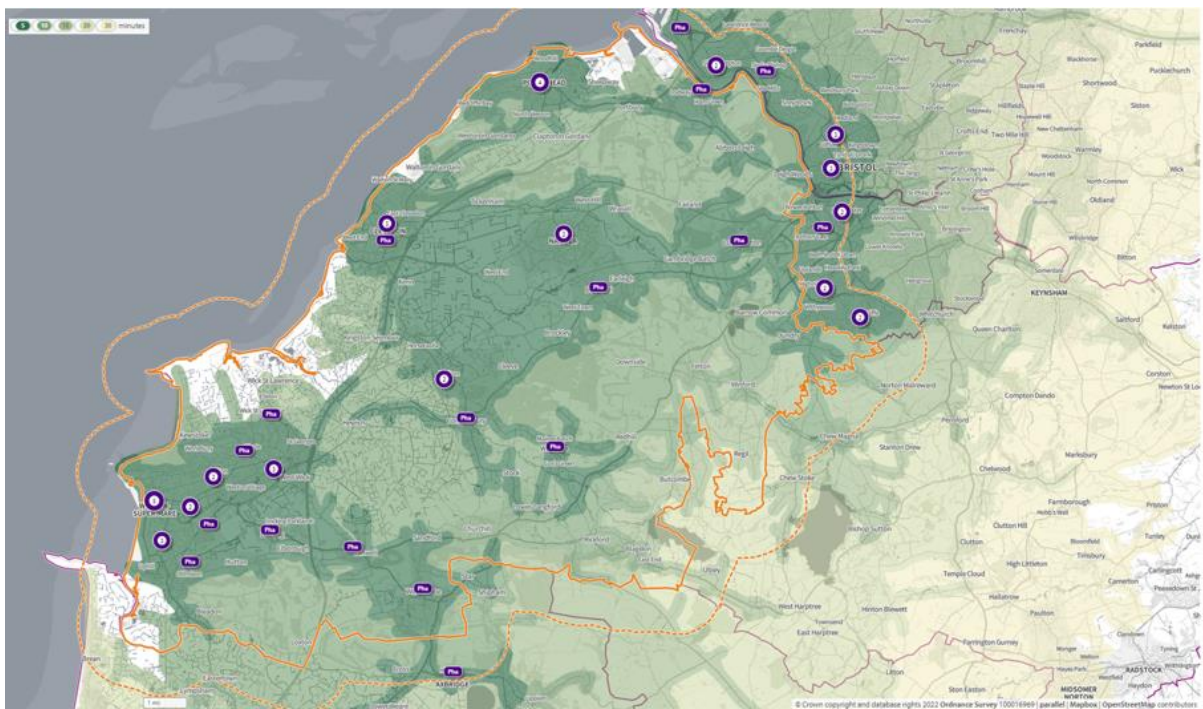
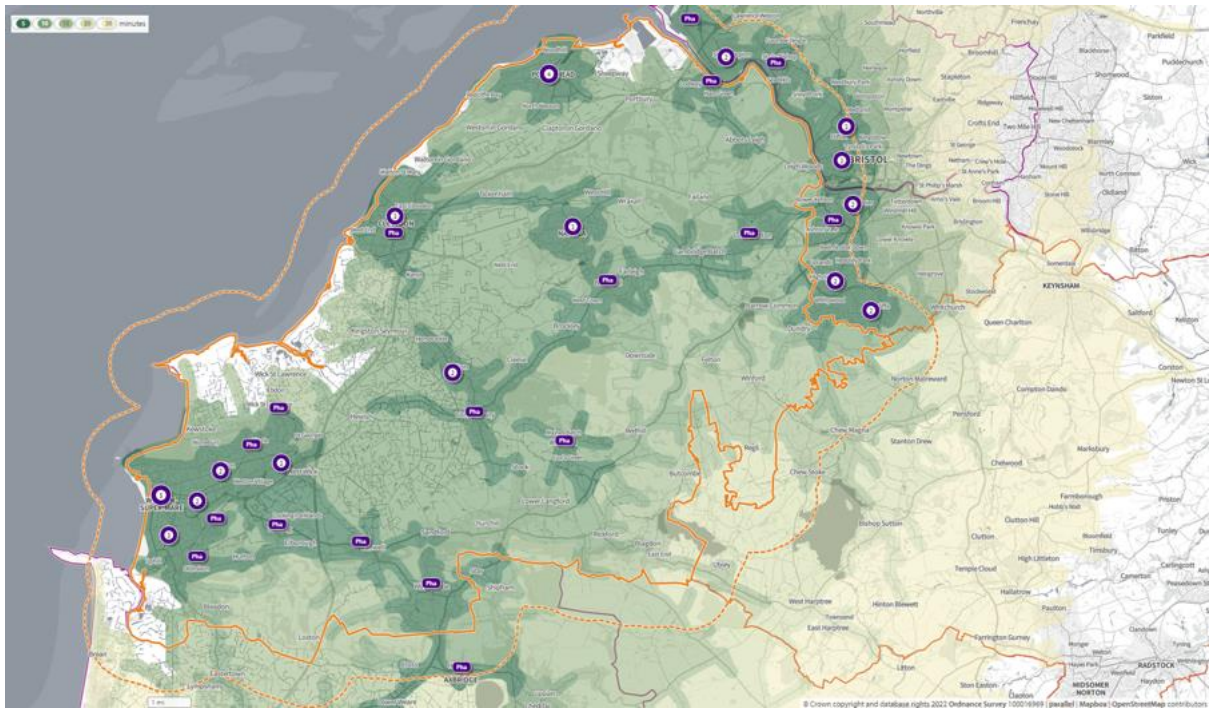


Figure 32: Car driving time (rush hour)



Appendix III: Pharmacy details

Opening hours

ODS CODE	Trading Name	Location		Opening Hours							Total Opening Hours
		Town	Postcode	Monday	Tuesday	Wednesday	Thursday	Friday	Saturday	Sunday	
FG817	Cohens Chemist	Backwell	BS48 3HA	09:00-13:00 14:00-17:30	09:00-13:00 14:00-17:30	09:00-13:00 14:00-17:30	09:00-13:00 14:00-17:30	09:00-13:00 14:00-17:30	09:00-13:00	Closed	41.5
FC695	Banwell Village Pharmacy	Banwell	BS29 6AD	09:00-13:00 14:00-18:00	09:00-13:00 14:00-18:00	09:00-13:00 14:00-18:00	09:00-14:00	09:00-13:00 14:00-18:00	09:00-12:00	Closed	40
FDL90	Smart Pharm	Clevedon	BS21 6BP	08:45-18:30	08:45-18:30	08:45-18:30	08:45-18:30	08:45-18:30	09:00-12:00	Closed	56.75
FJ615	Well Pharmacy	Clevedon	BS21 7TA	09:00-18:30	09:00-18:30	09:00-18:30	09:00-18:30	09:00-18:30	Closed	Closed	47.5
FNX05	Boots Pharmacy	Clevedon	BS21 6HX	09:00-14:00 14:30-17:00	09:00-14:00 14:30-17:00	09:00-14:00 14:30-17:00	09:00-14:00 14:30-17:00	09:00-14:00 14:30-17:00	09:00-14:00 14:30-17:00	Closed	45
FRM86	Tesco In-Store Pharmacy	Clevedon	BS21 6LH	08:30-13:00 14:00-20:00	08:30-13:00 14:00-20:00	08:30-13:00 14:00-20:00	08:30-13:00 14:00-20:00	08:30-13:00 14:00-20:00	08:30-13:00 14:00-20:00	10:00-16:00	69
FEV32	Day Lewis Pharmacy	Congresbury	BS49 5DG	09:00-13:00 14:00-18:00	09:00-13:00 14:00-18:00	09:00-13:00 14:00-17:30	09:00-13:00 14:00-18:00	09:00-13:00 14:00-18:00	09:00-13:00	Closed	43.5
FWJ61	Cohens Chemist	Long Ashton	BS41 9AA	09:00-18:00	09:00-18:00	09:00-18:00	09:00-18:00	09:00-18:00	Closed	Closed	45
FCC04	Day Lewis Pharmacy (High St)	Nailsea	BS48 1AS	09:00-13:00 14:00-18:00	09:00-13:00 14:00-18:00	09:00-13:00 14:00-18:00	09:00-13:00 14:00-18:00	09:00-13:00 14:00-18:00	Closed	Closed	40
FGG26	Boots Pharmacy	Nailsea	BS48 1RQ	09:00-13:00 13:30-17:00	09:00-13:00 13:30-17:00	09:00-13:00 13:30-17:00	09:00-13:00 13:30-17:00	09:00-13:00 13:30-17:00	09:00-13:00 13:30-17:00	Closed	44.5
FJG78	Day Lewis Pharmacy (Tower House)	Nailsea	BS48 2XX	09:00-18:00	09:00-18:00	09:00-18:00	09:00-18:00	09:00-18:00	Closed	Closed	45
FW477	Cohens Chemist	Pill	BS20 0EJ	09:00-13:00 14:00-17:30	09:00-13:00 14:00-17:30	09:00-13:00 14:00-17:30	09:00-13:00 14:00-17:30	09:00-13:00 14:00-17:30	09:00-13:00	Closed	41.5
FDD77	West Hill Pharmacy	Portishead	BS20 6LT	09:00-12:00 13:00-18:00	09:00-12:00 13:00-18:00	09:00-12:00 13:00-18:00	09:00-12:00 13:00-18:00	09:00-12:00 13:00-18:00	09:00-12:00	Closed	43
FNG08	Boots Pharmacy	Portishead	BS20 6EL	07:00-23:00	07:00-23:00	07:00-23:00	07:00-23:00	07:00-23:00	08:00-20:00	09:00-17:00	100
FPX95	LloydsPharmacy (Waitrose)	Portishead	BS20 7DE	09:00-19:00	09:00-19:00	09:00-19:00	09:00-19:00	09:00-19:00	09:00-17:00	10:30-16:30	64

ODS CODE	Trading Name	Location		Opening Hours							Total Opening Hours
		Town	Postcode	Monday	Tuesday	Wednesday	Thursday	Friday	Saturday	Sunday	
FW311	LloydsPharmacy (Victoria Sq)	Portishead	BS20 6AQ	08:45-18:30	08:45-18:30	08:45-18:30	08:45-18:30	08:45-18:30	09:00-13:00	Closed	52.75
FA384	Jays Pharmacy	Weston-super-Mare	BS23 1LA	09:00-18:00	09:00-18:00	09:00-18:00	09:00-18:00	09:00-18:00	09:00-14:00	Closed	50
FA839	LloydsPharmacy	Weston-super-Mare	BS22 6HG	09:00-18:00	09:00-18:00	09:00-18:00	09:00-18:00	09:00-18:00	09:00-17:30	Closed	53.5
FD459	Boots Pharmacy (Locking Castle)	Weston-super-Mare	BS24 9DA	09:00-17:30	09:00-17:30	09:00-17:30	09:00-17:30	09:00-17:30	09:00-13:00	Closed	46.5
FDM06	Morrisons Pharmacy	Weston-super-Mare	BS24 7AY	08:30-13:30 14:30-20:00	08:30-13:30 14:30-20:00	08:30-13:30 14:30-20:00	08:30-13:30 14:30-20:00	08:30-13:30 14:30-20:00	08:00-13:30 14:30-19:00	10:00-16:00	68.5
FE077	Boots Pharmacy (High St)	Weston-super-Mare	BS23 1JA	09:30-18:00	09:30-18:00	09:30-18:00	09:30-18:00	09:30-18:00	09:30-18:00	10:30-16:30	57
FEW44	Magna Pharmacy Haywood	Weston-super-Mare	BS24 8ES	09:00-18:30	09:00-18:30	09:00-18:30	09:00-18:30	09:00-18:30	09:00-13:00	Closed	51.5
FG029	Boots Pharmacy (St Andrews Parade)	Weston-super-Mare	BS23 3SS	09:00-18:00	09:00-18:00	09:00-18:00	09:00-18:00	09:00-18:00	09:00-13:00	Closed	49
FGP29	Day Lewis Pharmacy	Weston-super-Mare	BS23 3HQ	08:30-13:00 14:00-18:30	08:30-13:00 14:00-18:30	08:30-13:00 14:00-18:30	08:30-13:00 14:00-18:30	08:30-13:00 14:00-18:30	Closed	Closed	45
FGX27	Locking Pharmacy	Weston-super-Mare	BS24 8AR	08:30-18:30	08:30-18:30	08:30-18:30	08:30-18:30	08:30-18:30	09:00-13:00	Closed	54.5
FN238	Tesco In-Store Pharmacy	Weston-super-Mare	BS23 1XG	08:00-20:00	08:00-20:00	08:00-20:00	08:00-20:00	08:00-20:00	08:00-20:00	10:00-16:00	78
FNV39	Asda Pharmacy	Weston-super-Mare	BS23 3UZ	08:00-23:00	07:00-23:00	07:00-23:00	07:00-23:00	07:00-23:00	07:00-22:00	10:00-16:00	100
FP044	LloydsPharmacy	Weston-super-Mare	BS22 7GF	09:00-18:00	09:00-18:00	09:00-18:00	09:00-18:00	09:00-18:00	09:00-13:00	Closed	49
FP284	Well Pharmacy	Weston-super-Mare	BS22 8EF	09:00-17:30	09:00-17:30	09:00-17:30	09:00-17:30	09:00-17:30	09:00-13:00	Closed	46.5
FPH80	Tudor Lodge Pharmacy	Weston-super-Mare	BS23 4JP	06:00-23:00	06:00-23:00	06:00-23:00	06:00-23:00	06:00-23:00	06:00-21:00	Closed	100

ODS CODE	Trading Name	Location		Opening Hours							Total Opening Hours
		Town	Postcode	Monday	Tuesday	Wednesday	Thursday	Friday	Saturday	Sunday	
FPR03	Milton Pharmacy	Weston-super-Mare	BS22 8EN	08:00-23:59	00:00-23:59	00:00-23:59	00:00-20:00	08:00-20:00	08:00-14:00	Closed	102
FPT99	LloydsPharmacy	Weston-super-Mare	BS22 6BT	09:00-18:00	09:00-18:00	09:00-18:00	09:00-18:00	09:00-18:00	09:00-17:30	Closed	53.5
FQN71	Moorland Road Pharmacy	Weston-super-Mare	BS23 4HP	09:00-17:30	09:00-17:30	09:00-17:30	09:00-17:30	09:00-17:30	Closed	Closed	42.5
FR124	LloydsPharmacy	Weston-super-Mare	BS23 1EN	09:00-18:00	09:00-18:00	09:00-18:00	09:00-18:00	09:00-18:00	09:00-17:30	Closed	53.5
FRP15	Boots Pharmacy	Weston-super-Mare	BS24 7AY	07:30-23:59	07:30-23:59	07:30-23:59	07:30-23:59	07:30-23:59	07:30-23:59	10:00-16:00	105
FWJ84	Graham Road Pharmacy	Weston-super-Mare	BS23 1YA	06:00-23:00	06:00-23:00	06:00-23:00	06:00-23:00	06:00-23:00	Closed	06:00-21:00	100
FDX58	Boots Pharmacy	Winscombe	BS25 1AG	09:00-18:00	09:00-18:00	09:00-18:00	09:00-18:00	09:00-18:00	09:00-13:00	Closed	49
FNH66	Wrington Pharmacy	Wrington	BS40 5QE	09:00-13:00 13:30-17:30	09:00-13:00 13:30-17:30	09:00-13:00 13:30-17:30	09:00-13:00 13:30-17:30	09:00-13:00 13:30-17:30	09:00-13:00	Closed	44
FMD77	LloydsPharmacy	Yatton	BS49 4EG	09:00-18:00	09:00-18:00	09:00-18:00	09:00-18:00	09:00-18:00	09:00-17:30	Closed	53.5
FTN90	Cohens Chemist	Yatton	BS49 4ER	09:00-18:30	09:00-18:30	09:00-18:30	09:00-18:30	09:00-18:30	Closed	Closed	47.5

Advanced and enhanced services

ODS CODE	Trading Name	PNA 2022 Locality	Location			Contract			Advanced Services							Enhanced Services	
			Address	Town	Postcode	40 Hours	100 Hours	CPCS	New Medicines Service	Flu	Hypertension case-finding service	Stop Smoking Service	Appliance Usage Review	Stoma Appliance Customisations	Hep C Testing Service	Specialist Medicines Service	
FG817	Cohens Chemist	Rural	1 West Town Road	Backwell	BS48 3HA	Yes	No	Yes	Yes	Yes	Yes	No	No	No	No	No	No
FC695	Banwell Village Pharmacy	Rural	Westfield Road	Banwell	BS29 6AD	Yes	No	Yes	Yes	No	No	No	No	No	No	No	No
FDL90	Smart Pharm	Clevedon, Nailsea and Portishead	111 Old Street	Clevedon	BS21 6BP	Yes	No	Yes	Yes	No	Yes	Yes	No	No	No	Yes	No
FJ615	Well Pharmacy	Clevedon, Nailsea and Portishead	2 Sunnyside Road	Clevedon	BS21 7TA	Yes	No	Yes	Yes	Yes	Yes	Yes	No	No	No	No	No
FNX05	Boots Pharmacy	Clevedon, Nailsea and Portishead	7 Clevedon Triangle Centre	Clevedon	BS21 6HX	Yes	No	Yes	Yes	Yes	No	No	No	No	No	No	No
FRM86	Tesco In-Store Pharmacy	Clevedon, Nailsea and Portishead	Kenn Road	Clevedon	BS21 6LH	Yes	No	Yes	Yes	Yes	No	No	No	No	No	No	Yes
FEV32	Day Lewis Pharmacy	Rural	3 Broad Street	Congresbury	BS49 5DG	Yes	No	Yes	Yes	Yes	Yes	No	No	No	No	No	No
FWJ61	Cohens Chemist	Rural	27 Weston Road	Long Ashton	BS41 9AA	Yes	No	Yes	Yes	Yes	Yes	No	No	No	No	No	No
FCC04	Day Lewis Pharmacy	Clevedon, Nailsea and Portishead	82b High Street	Nailsea	BS48 1AS	Yes	No	Yes	Yes	No	Yes	No	No	No	No	No	No
FGG26	Boots Pharmacy	Clevedon, Nailsea and Portishead	29-30 Somerset Square	Nailsea	BS48 1RQ	Yes	No	Yes	Yes	Yes	No	No	No	No	No	No	No
FJG78	Day Lewis Pharmacy	Clevedon, Nailsea and Portishead	Tower House Medical Centre, Stock Way South	Nailsea	BS48 2XX	Yes	No	Yes	Yes	No	Yes	No	No	No	No	No	No
FW477	Cohens Chemist	Clevedon, Nailsea and Portishead	3 Baltic Place	Pill	BS20 0EJ	Yes	No	Yes	Yes	Yes	Yes	No	No	No	No	No	No
FDD77	West Hill Pharmacy	Clevedon, Nailsea and Portishead	117 Avon Way	Portishead	BS20 6LT	Yes	No	Yes	Yes	Yes	Yes	No	No	No	No	No	No
FNG08	Boots Pharmacy	Clevedon, Nailsea and Portishead	50 High Street	Portishead	BS20 6EL	No	Yes	Yes	Yes	Yes	No	No	No	No	No	No	Yes
FPX95	LloydsPharmacy	Clevedon, Nailsea and Portishead	Waitrose, Harbour Road	Portishead	BS20 7DE	Yes	No	Yes	Yes	Yes	Yes	No	No	Yes	No	No	No
FW311	LloydsPharmacy	Clevedon, Nailsea and Portishead	Portishead Medical Group, Victoria Square	Portishead	BS20 6AQ	Yes	No	Yes	Yes	Yes	Yes	No	No	Yes	No	No	No
FA384	Jays Pharmacy	Weston and Worle	5 Waterloo Street	Weston-super-Mare	BS23 1LA	Yes	No	Yes	No	No	No	No	No	No	No	No	No
FA839	LloydsPharmacy	Weston and Worle	146 High Street, Worle	Weston-super-Mare	BS22 6HG	Yes	No	Yes	Yes	Yes	Yes	Yes	No	Yes	No	No	No
FD459	Boots Pharmacy	Weston and Worle	Monkton Avenue, Oldmixon	Weston-super-Mare	BS24 9DA	Yes	No	Yes	Yes	Yes	Yes	No	No	No	No	No	No
FDM06	Morrisons Pharmacy	Weston and Worle	Locking Castle	Weston-super-Mare	BS24 7AY	Yes	No	Yes	Yes	Yes	No	No	No	No	No	No	No
FE077	Boots Pharmacy	Weston and Worle	52-56 High Street	Weston-super-Mare	BS23 1JA	Yes	No	Yes	Yes	Yes	Yes	No	No	No	No	No	No
FEW44	Magna Pharmacy Haywood	Weston and Worle	Unit 2, Whitney Crescent, Haywood Village	Weston-super-Mare	BS24 8ES	Yes	No	Yes	Yes	Yes	Yes	No	No	No	No	No	No
FG029	Boots Pharmacy	Weston and Worle	16-17 St Andrews Parade	Weston-super-Mare	BS23 3SS	Yes	No	Yes	Yes	Yes	Yes	No	No	No	No	No	No
FGP29	Day Lewis Pharmacy	Weston and Worle	168 Locking Road	Weston-super-Mare	BS23 3HQ	Yes	No	Yes	Yes	Yes	Yes	Yes	No	No	No	No	No
FGX27	Locking Pharmacy	Weston and Worle	64 Grenville Avenue, Locking	Weston-super-Mare	BS24 8AR	Yes	No	Yes	Yes	Yes	Yes	No	No	No	No	No	No
FN238	Tesco In-Store Pharmacy	Weston and Worle	Station Road	Weston-super-Mare	BS23 1XG	Yes	No	Yes	Yes	Yes	Yes	No	No	No	No	No	No
FNV39	Asda Pharmacy	Weston and Worle	Phillips Road	Weston-super-Mare	BS23 3UZ	No	Yes	Yes	Yes	Yes	Yes	No	No	No	No	Yes	No
FP044	LloydsPharmacy	Weston and Worle	Unit 5, Castlemead Shopping Centre, Worle	Weston-super-Mare	BS22 7GF	Yes	No	Yes	Yes	Yes	Yes	No	Yes	No	No	No	No
FP284	Well Pharmacy	Weston and Worle	205 Milton Road	Weston-super-Mare	BS22 8EF	Yes	No	Yes	Yes	Yes	Yes	Yes	No	No	No	No	No
FPH80	Tudor Lodge Pharmacy	Weston and Worle	Tudor Lodge surgery, 3 Nithsdale Road	Weston-super-Mare	BS23 4JP	No	Yes	Yes	No	Yes	No	No	No	No	No	No	No
FPR03	Milton Pharmacy	Weston and Worle	260 Milton Road	Weston-super-Mare	BS22 8EN	No	Yes	Yes	Yes	Yes	No	No	No	No	No	No	No
FPT99	LloydsPharmacy	Weston and Worle	3 North Worle District Centre, Worle	Weston-super-Mare	BS22 6BT	Yes	No	Yes	Yes	Yes	Yes	No	No	Yes	No	No	No
FQN71	Moorland Road Pharmacy	Weston and Worle	53 Moorland Road	Weston-super-Mare	BS23 4HP	Yes	No	Yes	Yes	Yes	Yes	No	No	No	No	No	No
FR124	LloydsPharmacy	Weston and Worle	37 Whitecross Road	Weston-super-Mare	BS23 1EN	Yes	No	Yes	Yes	Yes	Yes	No	No	Yes	No	No	No
FRP15	Boots Pharmacy	Weston and Worle	Summer Lane, Locking Castle District Centre	Weston-super-Mare	BS24 7AY	No	Yes	Yes	Yes	Yes	Yes	No	No	No	No	No	Yes
FWJ84	Graham Road Pharmacy	Weston and Worle	22 Graham Road	Weston-super-Mare	BS23 1YA	No	Yes	Yes	No	Yes	Yes	No	No	No	No	No	No
FDX58	Boots Pharmacy	Rural	33 Woodborough Road	Winscombe	BS25 1AG	Yes	No	Yes	Yes	Yes	No	No	No	No	No	No	No
FNH66	Wrington Pharmacy	Rural	Silver Street	Wrington	BS40 5QE	Yes	No	Yes	No	Yes	Yes	No	No	No	No	No	No
FMD77	LloydsPharmacy	Rural	8 Pages Court	Yatton	BS49 4EG	Yes	No	Yes	Yes	Yes	Yes	No	No	No	No	No	No
FTN90	Cohens Chemist	Rural	Mendip Vale Medical Centre, 155 Mendip Road	Yatton	BS49 4ER	Yes	No	Yes	Yes	No	Yes	Yes	No	No	No	No	No

Appendix IV: Locally commissioned services

Locally commissioned services by BNSSG CCG

- The BNSSG **Community Pharmacy Patient Group Direction (PGD) Service** successfully went live in March 2020. This service compliments the national NHS 111 service and Community Pharmacy Consultation Service (CPCS) with services normally accessed through GP practices. The PGD service is aimed at alleviating some of the pressure on General Practice and Out of Hours Services by enabling people to access prescription only treatments through their community pharmacy. The PGDs cover antibiotic treatment of urinary tract infections for females aged 16-64, antibiotic treatment of Impetigo for adults and children aged 2 and over, treatment of mild inflammatory skin conditions, antibiotic eye drops or ointment for conjunctivitis in children from 31 days to under 2 years and antibiotics for treatment of Sore Throat. All these PGDs follow local antimicrobial prescribing guidelines.
- **Emergency supplies of medicines**, which enables the pharmacist to provide a supply of a prescription only medicine when required to ensure prompt access and continuity of supply for the person e.g. if they have run out of their medicines on a weekend.
- Provision of **antiviral treatments** in the event of an Influenza Outbreak. This local service would be used on an as required basis in the event of an outbreak.
- **Supervised consumption of Tuberculosis treatment (TB DOTS Service)**. This is used on an as required basis, and pharmacy location is dependent on where the individual is resident.

Access to these services is very good in all localities. All pharmacies are signed up to provide emergency supplies and most offer minor ailment services (see Table 6)

Table 6: Provision of CCG commissioned services

	BNSSG Emergency Supply Service	Chloramphenicol PGD	Hydrocortisone PGD	Impetigo PGD	Sore Throat PGD	UTI PGD
Clevedon, Nailsea and Portishead	12	12	12	12	12	12
Rural	8	8	8	8	8	8
Weston and Worle	20	18	18	18	19	18
North Somerset	40	38	38	38	39	38

Locally commissioned services by North Somerset Council

Sexual health services-These services are aimed at young adults under 25 to prevent and treat sexually transmitted infections and unwanted pregnancies. They include:

- Condom Supply
- Emergency Hormonal Contraception (EHC) supply via Patient Group Direction (PGD)
- Chlamydia Treatment via PGD
- Facilitate the referral of clients, especially those from hard to reach groups, into mainstream sexual health services.

The majority of pharmacies (33) are currently registered for EHC Supply (11 in Clevedon, Nailsea and Portishead locality, 8 in the Rural locality and 14 in Weston and Worle locality). 18 pharmacies signed up for Chlamydia screening and treatment and condom supply (6 in each locality).

Needle and Syringe Exchange Service

This service is designed to reduce harm from illicit drug use, such as transmission of blood borne viruses by providing injecting drug users with a free source of sterile

injecting equipment and paraphernalia required to produce an injection. The service also provides a safe disposal mechanism for used injecting equipment.

In addition, the service aims to increase referral into drug treatment services through effective signposting.

Ten pharmacies are registered to provide needle exchange services, there are at least one pharmacy in each locality area that is registered to do this with the highest number being in the Weston and Worle locality area (6) with 3 in the Clevedon, Nailsea and Portishead locality and one in the Rural locality.

Supervised Consumption Service

The Department of Health recommends that clients in receipt of a prescription for an opiate substitute medication (methadone or buprenorphine) have their consumption of this medication supervised for at least the first three months of treatment.

Therefore this service is designed to support clients in their drug treatment journey and to ensure that the initiation of substitute prescribing is carried out safely.

All pharmacies in North Somerset are registered to supervise the consumption of medication

Stop Smoking Services (including supply of nicotine replacement products and varenicline (via PGD))

Smoking is a major contributor to illness and death. It has been estimated that approximately 300 deaths a year in North Somerset are attributable to smoking.

There is strong evidence that stopping smoking is the single most important thing a smoker can do for their current and future health.

The overall aim of this service is to support the reduction of smoking prevalence in North Somerset and to reduce health inequalities, enabling clients to access high quality stop smoking support which best fits their needs.

Patients that use an NHS Stop Smoking service based on both pharmacotherapy and behavioural support are four times more likely to succeed.

The majority (32) of all pharmacies are registered to provide stop smoking support, with a lower number (10) also registered to provide Varenicline. There are at least 8 pharmacies in each locality that can provide a stop smoking service, however provision of Varenicline supply is restricted to just two pharmacies in the Clevedon, Nailsea and Portishead locality and one in the rural locality.

Table 7: Provision of council commissioned services

North Somerset Council locally commissioned services	Clevedon, Nailsea and Portishead	Rural	Weston and Worle	North Somerset
Chlamydia Treatment	6	6	6	18
EHC	11	8	14	33
C-Card	6	6	6	18
Supervised Consumption	12	8	20	40
Smoking Cessation including NRT	10	8	14	32
Smoking Cessation - Champix	2	1	7	10
Needle Exchange	3	1	6	10

Appendix V: North Somerset PNA Steering Group

Membership

The steering group consists of:

Samuel Hayward (Chair)	North Somerset Council
South West Pharmacy team	NHS England
Donna Davies	North Somerset Council
Natalie Richards	North Somerset Council
Sandra Shcherba	North Somerset Council
Georgie Bigg	Healthwatch BNSSG
Philip Kirby	Avon Local Medical Committee
Richard Brown	Avon Local Pharmaceutical Committee
Helen Wilkinson	BNSSG Clinical Commissioning Group
Cat McElvaney, Kirstie Corns David Moss	BNSSG CCG (Woodspring locality)
Clare Mcinerney, Abbey Mullah	BNSSG CCG (Weston/Worle/Villages locality)

Terms of reference

1 Objective/Purpose

To produce the North Somerset Pharmaceutical Needs Assessment as per NHS regulations including consultation on behalf of the North Somerset Health & Wellbeing Board.

2 Accountability

The Steering Group will report to the North Somerset Health and Wellbeing Board

3 Membership

The steering group consists of:

North Somerset Council – Acting consultant in Public Health (Chair), data analyst, planning manager, public health researcher (as project officer)

NHS England Area Team

Clinical Commissioning Group (CCG) Meds Management Representative, CCG Locality representative

Local Medical Committee Representative

Local Pharmaceutical Committee Representative

HealthWatch BNSSG representative

4 Frequency of meetings

There will be 3 meetings, provisionally during November (process and contributions), February (draft document sign-off) and September (consultation findings and final sign-off), with frequent email communications. It is anticipated that all meetings will be held remotely using MS Teams.

5 Responsibilities

Provide a clear and concise process for the PNA including governance

Obtain all information required to access pharmaceutical provision and health needs

Consult with statutory bodies and the public on the draft PNA

Report to North Somerset Health and Wellbeing Board on both process, draft and final PNA.

Publish a final PNA by 1st October 2022.

6 Date of adoption: 4 November 2021