

Climate Emergency Six Month Progress Report



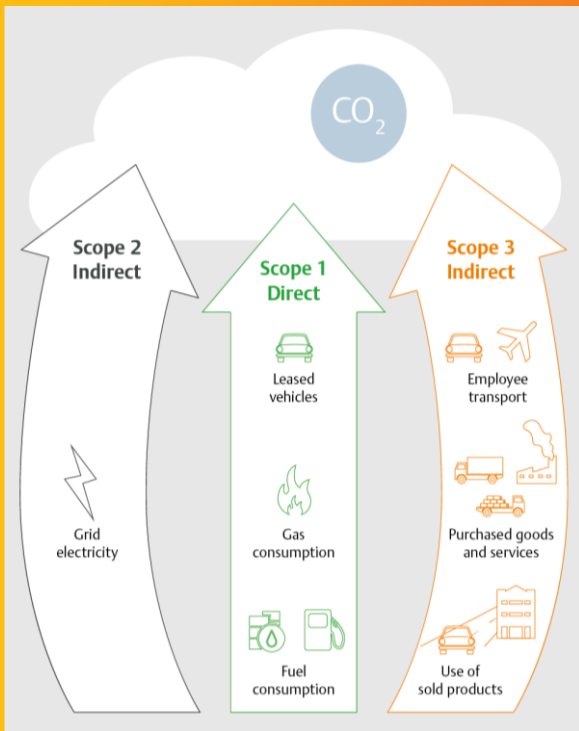
January 2021



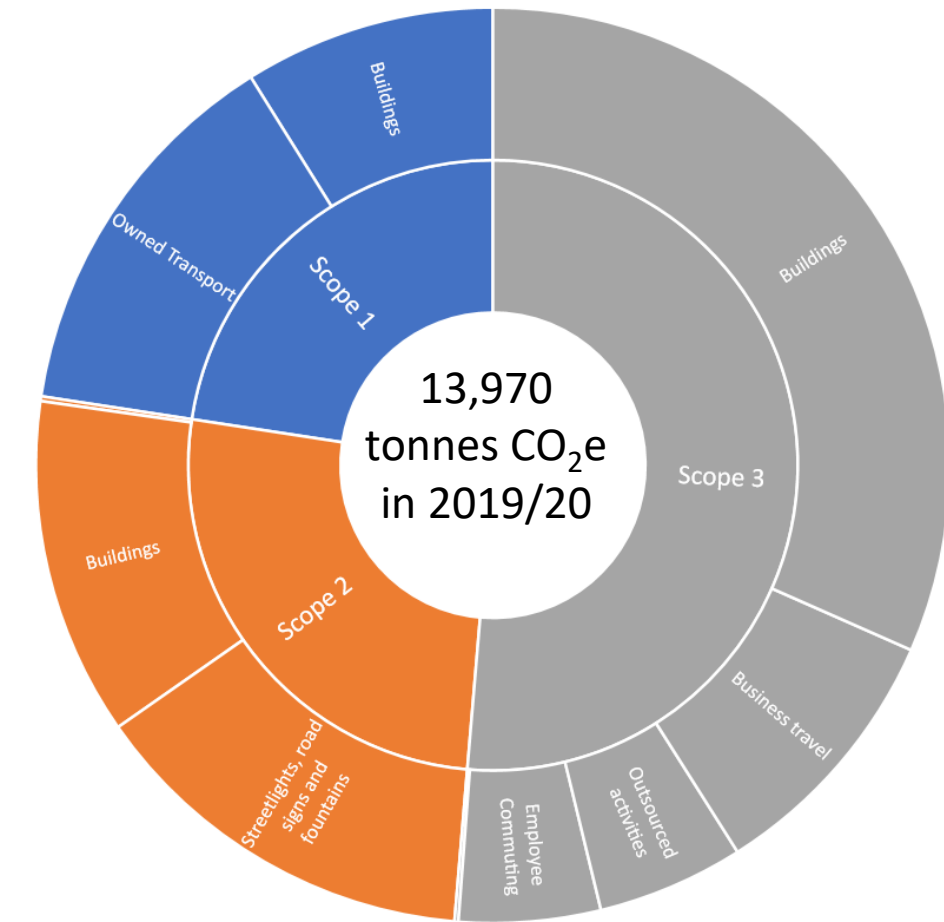
Summary of report

- The report provides a progress update on a few key activities related to the Climate Emergency Strategy and Action Plan.
- It reports a one-off half-year update of council carbon footprint due to significant changes to working patterns in response to COVID-19.
- An annotated version of the climate emergency action plan, giving brief descriptions of progress is also available.

Council Carbon Footprint



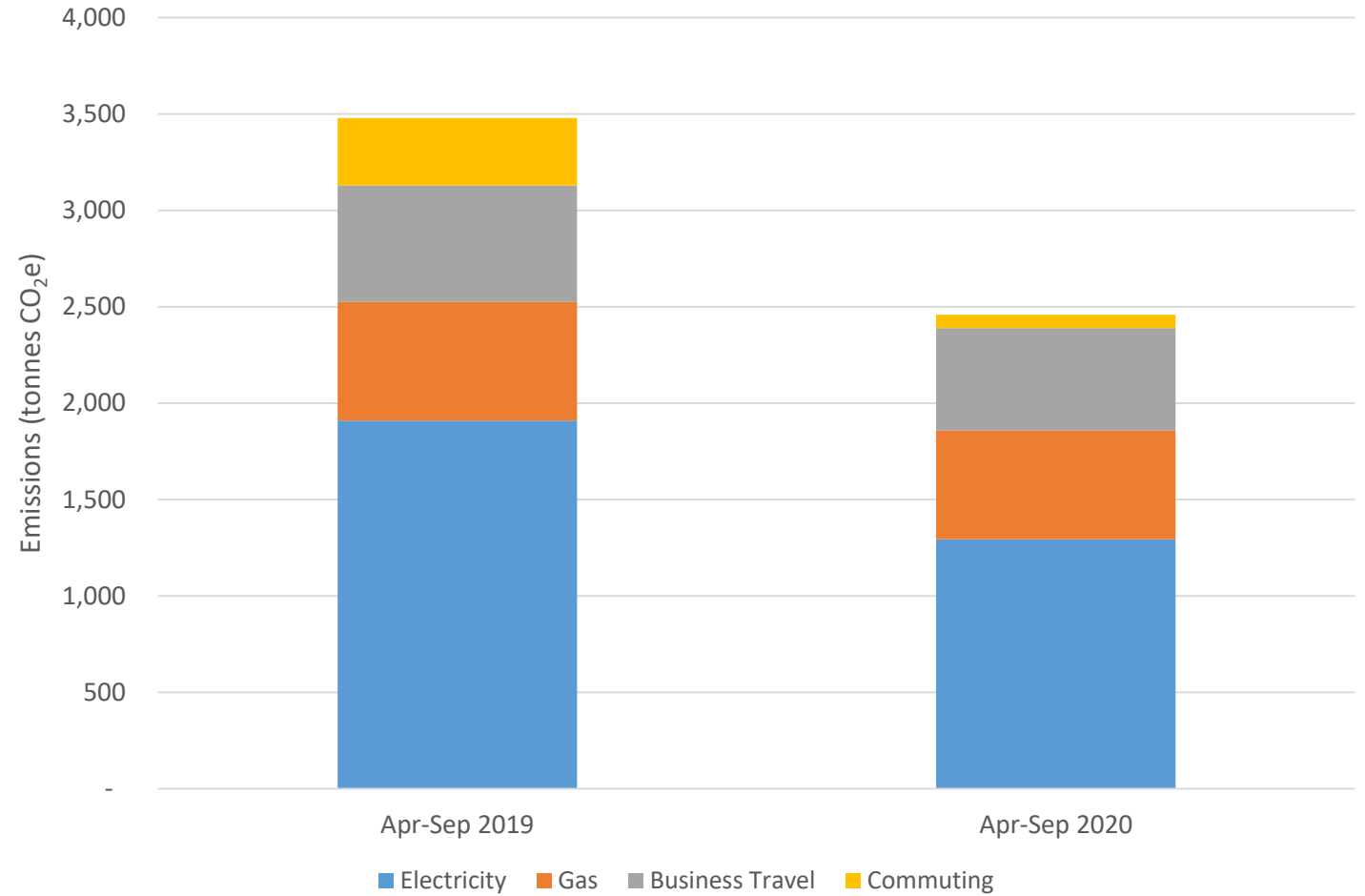
Total emissions for council activities Apr 2019 – Mar 2020
First published in July 2020



<https://www.n-somerset.gov.uk/sites/default/files/2020-11/NSC%20Greenhouse%20Gas%20Emissions%20Report%20-%202019-20.pdf>

Council Carbon Footprint: *impact of lockdown*

Emissions comparisons Apr-Sep 2019 and 2020



Note: not all data available for reporting period

Action planning and budget preparation

Action prioritisation exercise for budget preparation

- Actions scored against following criteria:
 - Greenhouse gas abatement potential
 - Strategic importance
 - Complexity/ease of implementation
 - Level of council powers
 - Social and political acceptability
 - Time criticality
 - Cost
 - Co-benefits

Carbon Literacy

- Council needs to take a leadership role across the area to encourage, support and enable others to reduce carbon emissions
- Climate emergency work needs to be embedded in everything we do
- North Somerset Council is now an accredited Carbon Literate Organisation
- Members and senior officers received training in October
- Training available for all officers and members



Transport update

- National policy now puts cycling at the heart of transport network.
 - Uphill Road North share use path completed Spring 2020
 - Draft Active Travel Strategy
 - Emergency Active Travel Fund
- Portishead Marina EV Charging Hub
 - Due to open Spring 2021
 - Other charging points are also planned in key locations

Progress overview

- Energy Efficiency audits
- Green Homes Grants
- Renewable energy feasibility studies
- UK100 Countryside Climate Network
- Parklands Village to deliver 15% zero carbon homes
- Upland, Nailsea - flagship 52 home Passivhaus, landscape-led scheme
- Urban Design Panel
- Local Plan consultations



Thank you

