

# Weston cycle circular



## Bike check

Remember to check your bike is in good order: check tyres and brakes. Carry a pump, puncture repair kit plus water, snacks, keys, cash and a charged mobile phone.



For those wanting to stretch their legs instead, there is an online library of more than 60 walks at [www.n-somerset.gov.uk/lifewalks](http://www.n-somerset.gov.uk/lifewalks)

With summer approaching and the sun beginning to shine, there's no better time to get out on your bicycle. This month, *Life* takes to the country lanes outside Weston-super-Mare.

This circular route can be started at any point. If starting on the seafront in Weston-super-Mare, head north along Marine Parade to take in the sights of Princess Royal Square, the Grand Pier and Knightstone Island.

Continue onto Birnbeck Road towards Anchor Head and you'll soon see Birnbeck Pier with fantastic views across the Bristol Channel to south Wales. Round the headland and continue on the tree-lined Kewstoke Toll Road. Look left and you'll glimpse Sand Bay through the trees.

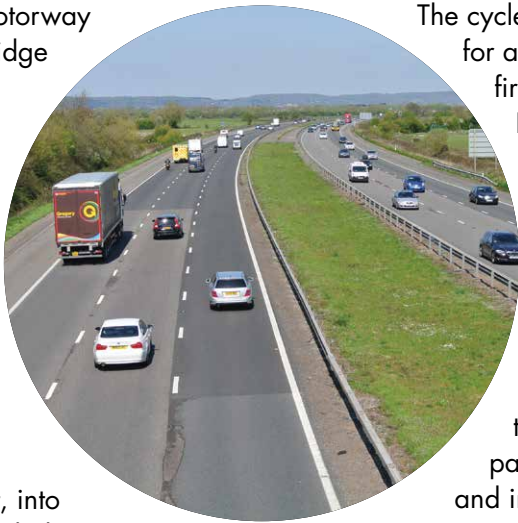


On entering Kewstoke, turn sharp left onto Beach Road which runs parallel to Sand Bay itself. About half way along Beach Road, take a right turn into Sand Road and follow the road, turning left into Lower Norton Lane. You'll then be heading towards Worle. Take a left into Lyefield Road. It's easy to miss so keep your eyes peeled. You will pass the cemetery and crematorium to your left.

At the junction it's a left along Ebdon Road out towards Wick St Lawrence. Turn right at the T-junction towards Bourton. Now you're on quiet country roads travelling through flat farmland. In the distance you can see cars travelling on the M5 motorway.

Head for the motorway and take the bridge to cross over it.

Cross the railway line at the next bridge then head towards the main road (A370). Turn right, then almost immediately left, into Palmers' End and along May's Green Road.



Past Puxton Court Farm, turn right towards East Rolstone, along Puxton Road. At the junction turn left, which is signposted to Banwell. It's then along the arrow-straight and level Riverside Road towards the village of Banwell, passing the rhyne on your right.

Enter the village from the north, past the 'cart wash' and the tall, imposing tower of St Andrew's church. Wind your way around the narrow streets until reaching West Street. Here it is recommended to dismount and push your bike up the hill before turning right into High Street, due to the traffic going through the village.



Then ride along the narrow High Street, which runs parallel and higher than the busier West Street and Knightcott Road. Follow the road around as it drops to the right to join the A371 main road.

Turn left onto the A371 and head back to Weston-super-Mare, past the former RAF Locking on your right. This is the busiest section of the route so take care and use the cycle path which starts on the left and then jumps to the right of the road about half way along. Rejoin the cycle path on the left-hand side as you approach the roundabout and Helicopter Museum on your left.

The cycle path passes construction work for a new roundabout. This marks the first phase of the 17-hectare Weston Business Quarter, a major new employment site on the former airfield.

The cycle path then takes you underneath the flyover, then it's a left turn up a small incline and over the railway bridge. From here follow the cycle path signs to the town centre. You will head past the Hutton Moor Leisure Centre and into Weston itself. Keep to the path as you go over a number of pedestrian crossings. The cycle path will eventually get you into the town centre and your start point.



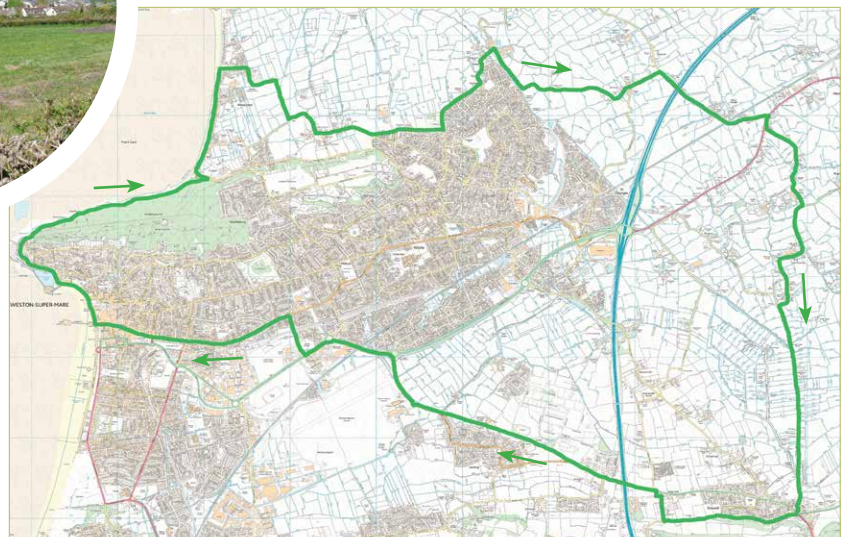
## Cycle information

**Distance:**  
20 miles approx

**Difficulty:**  
mainly level route along quiet country lanes. Some busier roads, especially in and around Weston. May not be suitable for very young children

**Duration:**  
2.5 – 3 hours at a steady pace

**Haven't got a bike? Borrow one for free! Email sustainable.travel@n-somerset.gov.uk or call 01934 426 404**



Download the full A4 map from [www.n-somerset.gov.uk/lifewalks](http://www.n-somerset.gov.uk/lifewalks)

© Crown copyright and database rights 2013 Ordnance Survey 100023397  
You are not permitted to copy, sub-license, distribute or sell this data to third parties in any form.