

NORTH SOMERSET

Life

# Crowds go wild in Weston

T4 picture special

**Inside**  
Your handy pull-out and keep  
A-Z guide to council services



[www.n-somerset.gov.uk](http://www.n-somerset.gov.uk)

Free internet access at your local library



# Welcome

## Dear resident,

The recent announcement that North Somerset Council has been named employer of the year (Weston College Excellence in Business Training Awards 2010) was excellent news and could not have come at a better time. After all the changes the council has been through, the award is a tribute to all our directors, management and staff. Change is always difficult and there is no doubt we have been through a lot, with more to come, so congratulations and thanks to all those who work on our behalf.

One of the most controversial debates at the moment is the proposal to have huge pylons stretching across parts of North Somerset to carry electricity generated by the new nuclear plant at Hinckley Point. We all know there is a growing demand for electricity and we need to provide a secure source for generations to come as traditional fuel runs out, but with the rapid advance in modern technology, many people feel that there must be a better way to distribute it than building ever bigger towers.

Even those of us not directly affected by pylons being built near our town or village will be concerned at the damage it could do to the countryside. North Somerset Council is opposing the plans and asking that alternatives, such as undersea and underground, are given further consideration. National Grid has said alternatives are complex and more expensive. I am sure that is true but this is a long-term project so may be a price worth paying. I am told that

65 per cent of the electricity generated at Hinckley Point will be exported out of our region. How will that affect the viability of the proposed barrage that is still being discussed? We will continue to oppose the overhead routes but if it is agreed by Government then we will ask for some of the cable to be buried underground through the most sensitive areas.

As we get ready for the new waste recycling service, collection teams have had to learn new routes and residents get used to new collection days. There is no doubt that there have been many difficulties over missed collections and I apologise on behalf of the council's contractors. With more than 90,000 homes in North Somerset there were bound to be some teething problems but the situation is now improving rapidly and I would ask for your continued patience. I realise how irritating it can be but the benefits of increased recycling, instead of burying our rubbish, should soon start to pay off. If you still have any problems please call the team on 01934 888 802 or tell your local councillor and they will get it sorted out as soon as possible.

Summer is with us and it looks as if we are getting better weather this year. If you are going on holiday I hope you have a great time. If you are unable to take a break, turn to the What's On pages for many things to do locally, and don't forget Weston's new Grand Pier will be opening soon.

**Councillor Nigel Ashton**  
*Leader of North Somerset Council*

## Coming in next month's issue



### ■ **Seafront celebrations**

Weston's new-look seafront nears completion

### ■ **Public transport**

Helping to get everyone moving

Your next issue of *Life* will be delivered from 6 Sep

 *recycle me when you've read me*

This publication is available in large print, Braille or audio formats on request. Help is also available for people who require council information in languages other than English.

Contact 01275 884 139

# Contacts

## Life Editor

### Phone

01275 884 139

### Post

Life Editor, North Somerset Council  
Room 165, Town Hall  
Weston-super-Mare BS23 1UJ

### Email

editor@n-somerset.gov.uk

## North Somerset Council

### Post

North Somerset Council  
Town Hall  
Weston-super-Mare BS23 1UJ  
DX8411 Weston-super-Mare

### Phone

#### Main switchboard:

01934 888 888  
8am-6pm Mon-Fri



#### Council Connect for all streets and open spaces enquiries:

01934 888 802  
8am-6pm Mon-Fri  
streetsandopenspaces@n-somerset.gov.uk



#### Care Connect for all adult social services enquiries:

01275 888 801  
8am-6pm Mon-Fri  
care.connect@n-somerset.gov.uk

#### Emergency (out of hours):

01934 622 669

### Fax

01934 418 194

### Online

www.n-somerset.gov.uk

## Tourist Information Centre

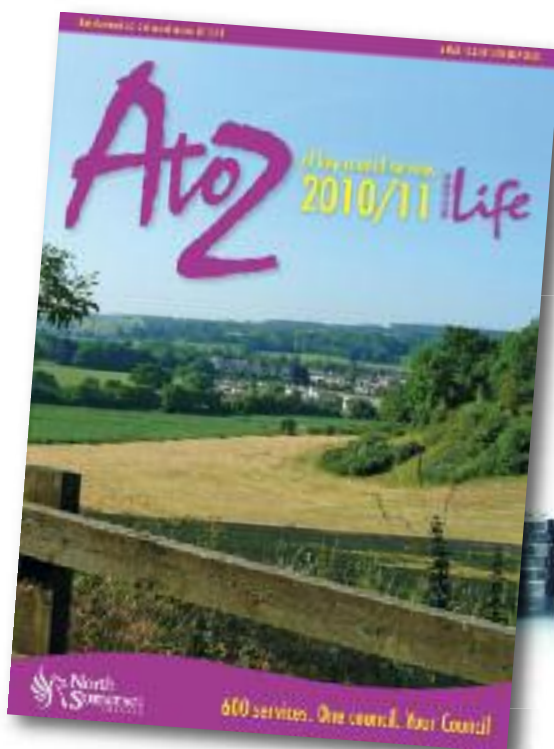
**Phone** 01934 888 800

**Online** www.n-somerset.gov.uk/tic  
www.visitsomerset.co.uk

# Contents

6

What does the emergency budget mean for North Somerset?



16-page A-Z pull out inside!



12 Stage two of recycling revolution starts

14

Students face big choices



# Regulars

4 News update

7 What's on –  
Playhouse Theatre  
Winter Gardens

Inside pull-out  
Walk – Sand Bay

## Emergency care for people who look after someone

People who look after friends or relatives are being urged to register for 24-hour emergency cover.

The Carers Emergency Response Scheme is a free scheme to give people peace of mind if they have someone else who depends on them.

Carers are asked to provide the names of two people who can be contacted in an emergency to provide some of the help needed for the cared-for person.

The scheme is provided by North Somerset Council and run by Crossroads Care North Somerset.

Carers can call the number and speak to an operator, who will organise help for the friend or relative.



To register call Crossroads Care: 01934 411 855



## Dig deep for new conservation group



Volunteers are needed to dig deep and help conserve a nature reserve in Clevedon.

Poets' Walk Local Nature Reserve is owned by North Somerset Council and people interested in conservation are being invited to help maintain it.

It is hoped the Friends of Poets' Walk group will meet regularly to undertake conservation and make the hill more attractive to wildlife, including monitoring flora and fauna.

Anyone interested should contact Esme Gilling by the end of August.

01934 427 663 (Mon-Weds) [esme.gilling@n-somerset.gov.uk](mailto:esme.gilling@n-somerset.gov.uk)



## Retirement properties up for sale

Retirement properties close to local amenities and shops are now available to buy through North Somerset Council.



A number of leasehold sheltered retirement properties are for sale throughout the area from £65,000 to £115,000.

Most are well established, purpose-built one or two bedroom flats in level positions and all are connected via intercom, providing 24-hour support to residents. They are managed by NSHousing and offer a range of support options depending on residents' needs.

01934 426 755

[jo.thomas2@n-somerset.gov.uk](mailto:jo.thomas2@n-somerset.gov.uk)



## Carelink crossword winner

Nearly 250 entries were received for the Carelink crossword competition in June's edition of *Life*.

Mrs G. Helston, of Winscombe, was chosen as the winner and collects £50 of gardening vouchers from Cadbury Garden Centre in Congresbury. Congratulations!

# Make a fresh start to your commute

Car drivers who wish the school holiday reduction in traffic could last all year are being urged to re-think their commute this September.

Pupils will be back at school next month but a four-week Jam Busting challenge is taking place to get cars off the road and show drivers how the streets could be made safer for everyone all the time.



By cycling, walking, car sharing, motorcycling, using public transport or working from home, people can save money, reduce their carbon footprint and get healthier.

The Jam Busting scheme is run by North Somerset, Bath and North East Somerset, Bristol City and South Gloucestershire councils, and commuters who sign up and find other ways to commute will be entered into a prize draw.

For information [www.jambusting.com](http://www.jambusting.com) or call 01934 426 962



## Summer shows in bloom

Towns and villages around North Somerset will be in full bloom during summer shows this month.

Yatton and District Horticultural Society is hosting its 60th anniversary summer show from 2-4.30pm on Saturday 14 August in the village hall. Stalls, live music and crafts will be available. Admission is 80p for adults and 50p for seniors.

Weston Flower Show is also on 14 August in St Paul's Church Hall, Walliscote Road, from noon. See vegetables, flowers, floral art, photography and homecraft. Call 01934 628 758 for more information.

Felton will be holding its annual summer show on Saturday 28 August from 2.30-5pm. Music, entertainment, stalls and refreshments will be available.

For more local events see page 10



## Red Arrows fly into town

World famous aerobatic display team the Red Arrows will be wowing spectators in Weston-super-Mare during a dazzling display this month.

The team, which now includes their first female pilot Kirsty Moore, will be above the Grand Pier on Monday 16 August.

After the Red Arrows, the Breitling Wing Walkers will also perform.



[www.grandpier.co.uk](http://www.grandpier.co.uk)  
01934 620 238



Stunning  
new arch on  
seafront  
p11



## Libraries take stock of customer opinion

Library users in North Somerset feel very positive about the service they receive according to the results of a survey.

The user survey was carried out last year and revealed that 97 per cent rated customer care as very good or good; 96 per cent thought libraries were a safe place to visit; and 95 per cent said they are located in an easily accessible place.

Since the survey, further improvements include 13,000 new books (1,200 in large print); free use of public computers extended to 90 minutes daily; computer support sessions piloted at Weston Library; and a reading group for nine to 13-year-olds set up at the For All Healthy Living Centre library.

## eLife launch

Get news and features from North Somerset Council straight into your inbox by signing up to a new email newsletter.

eLife launches this summer and will contain fresh news, videos and interviews, as well as signposts to online services available on the council's website.

If you are interested in receiving eLife, email  
[editor@n-somerset.gov.uk](mailto:editor@n-somerset.gov.uk)



# Emergency budget outcomes



Councils across the country are facing up to tough decisions on spending as they prepare for a raft of cuts in funding from Central Government.

In June the new Chancellor of the Exchequer George Osborne outlined plans for solving the UK deficit during his emergency budget.

In local government, real cuts of 25 per cent are expected – and could be up to 40 per cent – over the next four years, but more details won't be known until the Government's spending review announcement on 20 October.

In North Somerset, the council has already made efficiency savings and has had the lowest council tax rise in the South West over the last two years, while also providing quality services and topping performance tables.

Despite this, it now needs to deal with the current round of budget cuts as part of the annual revision of its medium-term financial plan.

Director of Finance Phil Hall said: "It's clear that we face some very difficult budget decisions about the services we can provide.

"Some of these services are the most critical in the community – such as teachers, social workers and home care assistants. Last year we spent £40m providing care placements. Decisions will not be taken lightly."

The council is awaiting details of the spending review, based on the Government announcement, but it is likely it will need to save in excess of £30million over the next four years.



## Council tax freeze

As part of the Government's spending plans, councils will be encouraged to freeze council tax for one year from April 2011 in England, with additional funding being offered to councils which keep their own costs down.

In North Somerset, last year's council tax rise of two per cent meant the average bill for a Band D property is £1,150.87.

The council is committed to achieving the council tax freeze but some tough decisions will be needed if this is to be achieved.



[www.n-somerset.gov.uk/finance](http://www.n-somerset.gov.uk/finance)   
01934 634 619

# What's on

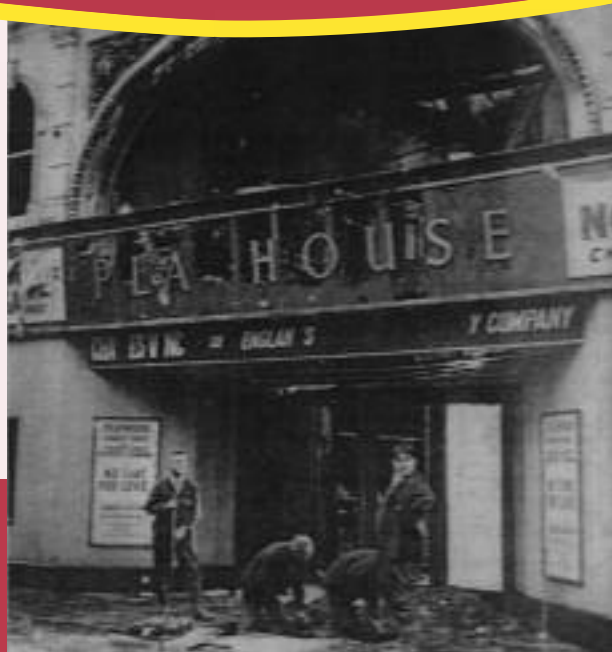
August-September 10

## Inside

The Playhouse Theatre	8-9
Winter Gardens	9
Events across the area	10

## Go backstage at popular theatre

Delve behind the scenes of Weston's popular theatre this month to discover how your favourite shows come to life.



*The clean-up after the devastating fire in 1964*

The Playhouse, in the High Street, will be opening its doors from 10.30am to 3.30pm on Sunday 8 August for people to find out more about its history and discover how a modern theatre works.

The free event is being organised by volunteer group the Friends of the Playhouse and guided tours take place throughout the day, lasting about an hour.

Visit the backstage areas and see the crew room featuring hundreds of photographs of performers who have appeared at the venue over the years.

See different lighting effects, speak into microphones and even take centre stage, looking out into the auditorium.

The Playhouse opened in 1946 when a former market building was converted into a 500-seater single-storey theatre. By the early 1960s

performers had included Frankie Howerd, Ken Dodd, Bob Monkhouse, and Leslie Crowther among many others.

A blaze destroyed the building in 1964 and it was described in the local press as the worst fire in the town since the Second World War.

People rallied-round and the new venue opened in 1969, with a larger stage. It now has a 664-seat auditorium with stalls downstairs and the circle above.

The Friends of the Playhouse formed in 1991 and volunteers donate their

time to sell programmes, collect tickets, prepare mailings, as well as raise funds to buy equipment.

This has helped pay for a new baby-grand piano, silver stage cloths, sound equipment, a data projector and state-of-the-art lighting desk.

Admission to the open day is free. Groups of six or more can book in advance.



*The Playhouse interior in 1946*



Playhouse box office:  
0934 645 544

[www.theplayhouse.co.uk](http://www.theplayhouse.co.uk)



# THE PLAYHOUSE

WESTON · SUPER · MARE

[www.theplayhouse.co.uk](http://www.theplayhouse.co.uk)

High Street, Weston-super-Mare BS23 1HP

**AUGUST**

**Wed 4** 7.30pm  
**Glenn Miller  
 Orchestra UK**

All the chart-toppers of the 40s. This is a perfect night out for Big Band aficionados.  
 £16, Concessions £15, Children £8

**Fri 6** 6pm and 8pm  
 Senior Summer School presents  
**'Much Ado Ron Ron'**

11-18-year-old performers from this year's theatre Senior Summer School present their end of course show.  
 £5, Children £3.50

**Sat 7** 7.30pm  
**Zion - A Tribute to  
 Bob Marley**

This nine-piece band spectacularly re-live all the magic of Bob's memorable hits.  
 £16, Concessions £14.50

**Sun 8** 10am to 3.30pm  
**Playhouse Open Day**

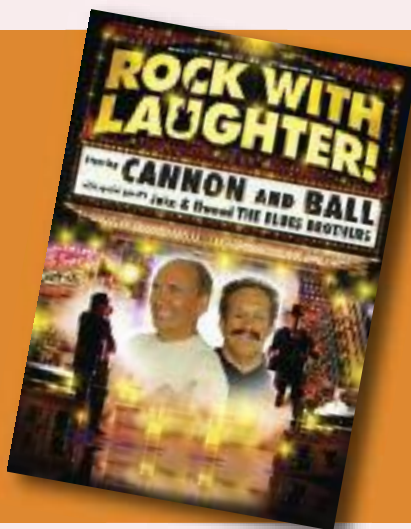
A chance to look behind the scenes with illustrated talks and conducted tours led by The Friends of The Playhouse. Call the Box Office for more details. It's fun and free!

**Sun 15** 7.30pm

## Cannon and Ball - Rock With Laughter

A brand new show from the fabulous Cannon and Ball and their friends Jake and Elwood as The Blues Brothers. A barnstorming night of unstoppable laughter and sensational music.

£17.50 • Concessions £16



**Sat 21 - Sun 22**  
 1.30pm and 4pm (Sat) 11.30am and 2pm (Sun)

## Charlie and Lola's Bestest Play

The stars of the BBC TV series are brought to life on stage by two of the country's top puppeteers in a magical show for the whole family.

£10



**Tue 10** 7.30pm  
**Joe Pasquale**

The legend of comedy returns to challenge our brains. A nutty night of truly professional comedy.  
 £17

**Thu 12** 7.30pm  
**One Night in Vegas**

Outstanding singer Martyn Lucas returns with his fantastic swing band to re-live the hits of Sinatra, Tom Jones, songs from the musicals and others.

£17, Concessions £16, Children £12,  
 Groups 1 in 10 free

**Sun 29** 7.30pm

## Last Night at The Proms

The British Philharmonic Orchestra return to Weston for this annual much-loved event with all the classics you'd expect. Bring flags, whistles and hooters!

£17, Concessions £15.50, Children £10, Family £48



**Fri 13** 7.30pm

## That'll Be The Day

This 25th Anniversary Summer show is the hottest show in town and the UK's most successful touring production, with favourite hits from the 50s, 60s and 70s.

£19.50, Concessions £18.50, Children £11

**Sat 14** 7.30pm

## Nice and Easy Does It

Professional local singer Pete Reynolds is joined by special guest, Irish comedian and TV personality Adrian Walsh, for a special night of music and comedy.

£13.50, Concessions £12, Children £8.50

**Sun 15** 7.30pm

## Cannon and Ball - Rock With Laughter

**Wed 18** 7.30pm

## Jim Davidson - If I Ruled the World

The king of comedy is back with his most outrageous show yet. All rise and salute King Jim as he shows you how the world should be (if he had it his way!).

Contains adult material - £20

**Thurs 19** 7.30pm

## The Searchers

The boys promise to pack a punch with all their classic hits - Sweets for my Sweet, Needles and Pins and When You Walk In The Room to name but a few.

£17.50, £16.50

**Sat 21 - Sun 22** 1.30pm and 4pm  
(Sat) 11.30am and 2pm (Sun)

## Charlie and Lola's Best Bestest Play

**Wed 25 - Sat 28** 7.30pm (Sat matinee 2.30pm)

## Hi-De-Hi

The hilarious stage version of the much-loved TV sitcom comes to Weston, including original cast members and the fabulous Damian Williams.

Evenings £14.50, £13.50, £12, Concessions £1 off

Matinee £10, Children £8

**Sat 28** 11am

## Junior Summer School Show

8-12 year old performers present their end of course show incorporating acting, singing and dancing.

£5, Children £3.50

**Sun 29** 7.30pm

## Last Night at The Proms

### SEPTEMBER

**Wed 1** 7.30pm

## The Platters

Following a string of hits in the 50s, The Platters are still going strong. A night of class entertainment from a world-class group.

£16.50, £15, Concessions £1 off

**Fri 3** 7.30pm

## The Bon Jovi Experience

An outstanding tribute to rock band Bon Jovi. The only tribute band in the world to have actually shared a stage with the man himself!

£16, Concessions £14.50

WINTER GARDENS  
WESTON - SUPER - MARE

[www.thewintergardens.com](http://www.thewintergardens.com)



## Special Events

Every Tuesday 2-4pm

### Mark Helmore Social Tea Dance

£4.50 (includes tea/coffee) Groups 10+ £4 in advance

Every Wednesday 8pm

### Songs From The Shows

£11, Concessions £10, Groups 10+ £9.50

Every Wednesday

### Sid Gateley Social Dances

Tea dance 2-4pm, Evening Social Dance 8-11pm. Afternoon £4.50 (includes tea/coffee) Groups 10+ £4 in advance. Evening £5.50

Every Friday 8-11pm

### Sue Burroughs Evening Sequence Dance £6

Saturday 14 9am-12.30pm

### Weston-super-Mare Farmers Market 01934 64 24 04

Saturday 14 9.30am-4.30pm

### Bookends Book Fair

Free admission

Saturday 14 8-11.30pm

### Evening Social Dance

Hosted by Sid Gateley. £7.50

Sunday 15 10am-4pm

### Dolls House and Minatures Fair

Free admission

Friday 27 - Sunday 29

### West End To You

Associate Director for Cameron Mackintosh will train people for three days. Visit [www.westendtoyou.com](http://www.westendtoyou.com)

Saturday 28 and 29 10am-4pm

### CD and Record Fair Free admission

Saturday 28 9am-5pm

### Made in Weston Arts and Crafts Free admission

To book tickets for any Playhouse or Winter Gardens event call the Box Office

01934 64 55 44

Cheques should be made payable to North Somerset Council.  
Bookings should be paid for within four working days.

Please mention *Life* when booking your tickets

# Local Events

## EVENTS

**Saturday 14 – Sunday 22**

### Terry Pegg School of Art Exhibition

10am-3.30pm, Dauncey's Hotel, Weston-super-Mare. In aid of Children in Need. 01934 643 201 or 07779 409 893

**Saturday 14 – Saturday 28**

### Clevedon Art Club 54th annual Open Exhibition

10.30am-6pm (Sundays 2-6pm), Science Atrium, Clevedon Community School. Works from professionals and talented amateurs, and local students. Entry £1. 01275 340832

**Saturday 28 (1-6.30pm) and Sunday 29 (10am-5pm)**

### Clevedon Flower Show and Festival,

Salthouse Fields, Clevedon. Entertainment and refreshments. Adults £4, concs £3, family ticket £10. 01275 343 132

## CLUBS AND SOCIETIES

**Every Monday**

**West Hill Senior Citizens Club** 1.45-3.30pm, Avon Way Hall, Portishead. 01275 849 080

**Kewstoke Arts and Crafts Group** 2-4pm, Kewstoke Village Hall. 01934 628 309

**Clevedon Choral Society** 7.30-9.30pm, Church Hall, Christchurch, Chapel Hill. 01275 879 574

**Every Tuesday**

**A1 Camera Club** 7.45pm, St Georges Community Centre, Willow Close, St Georges, Weston-super-Mare. 01934 521 780

**Every Wednesday**

### Good Companions Senior Citizens Club

2.30pm-4pm, Jubilee Pavilion, Long Ashton Community Centre. 01275 393617

**Wednesday 18**

### Portishead Senior Citizens Forum

2.15-4pm, Folk Hall, Portishead. 01275 843 678

**Every Thursday**

### Over 50s coffee morning

10-11.30am, Preatnes Green Resource Centre, 11 Feniton, Clovelly Road, Worle. 01934 529 733

**Last Thurs of month**

### Portishead Macular Disease Help Group

2.30-4.30pm, Folk Hall. 01275 845 238

**Friday 6 and 20**

**Bereaved Parents Together** 6-8pm, Crossroads Carers Centre, Graham Road, Weston-super-Mare. For parents who have lost a child. 01934 429 865

**Every Friday**

### Good Companions Senior Citizens Club

9-11.30am, Somerset Hall, Portishead. 01275 848 059

**Partially Sighted and Blind Club** 10.30am-3pm, Pembroke Court, Clevedon. 01275 872 559

**Mead Vale Friendship Club** (over 50s) 2-4pm, Community Hall, Worle. 01934 514 917

## MUSIC

**First Thurs of month**

**Weston organ and keyboard club** 7.30pm, Somerset Suite, Weston-super-Mare Football Club. £5 members, £6 non-members. 01934 812 401

**Every Friday**

### North Somerset Community Brass Band

7.30-9.30pm, Puxton and Hewish Village Hall. 01275 397 582

### Congresbury Brass Band

7.30-9.30pm, Memorial Hall, Congresbury. 01275 849 611 / 07986 007 829

### Lions Brass 4 Youth.

County brass band. 6.15-7.45pm. 1st Clevedon Scout Hall. 07815 733886

### Clevedon Gilbert & Sullivan Society

7.45pm, Crypt Hall, St Peter's Church, Alexandra Road. 01934 516 502

**Nailsea Theatre Club** 8pm, Nailsea Little Theatre, Union Street. 01275 852 275

**Wednesday 18**

### Jazz at the Orange Shades of Armstrong,

8-11pm, Prince of Orange Inn, Yatton. £7.50 or £8.50 on door. 01934 527 197

## SEPTEMBER

**Wednesday 1 – Saturday 4**

### Taste of Somerset craft market

**flower show, disco and music**

St. Mary's field Hutton.

Terry Porter 07989 855 339

**Saturday 4**

**Long Ashton village market** 9.30am-1pm,

Community Centre

**Kingston Seymour village market** 10am-noon, Village Hall

**Wednesday 8**

### Poppins coffee morning

10.30-11.30am, Corpus Christi Church Hall, Weston-super-Mare

Full August listings appeared in last month's bumper What's On guide. If you missed it visit [www.n-somerset.gov.uk/nslarchive](http://www.n-somerset.gov.uk/nslarchive) or [www.n-somerset.gov.uk/events](http://www.n-somerset.gov.uk/events) Visit [www.clearasmud.org.uk](http://www.clearasmud.org.uk) for links to more community clubs.

# Children get crafty at museum



Keeping the children entertained during the long summer holidays can be a minefield – but help is at hand at North Somerset Museum.

The attraction, in Weston-super-Mare, is hosting a series of popular activities throughout the holidays to help keep boredom at bay.

Seaside favourites Punch and Judy return and there will be plenty of hands-on activities for children to get crafty.

**Join in the fun...**

**Seashore Treasures** - every Tuesday until 24 August, from 11.30am-1pm. For under fives, adult assistance is essential.

**Punch and Judy** - every Wednesday until 25 August, at 11.30am and 2.30pm.

**Wish you were here** - every Thursday until 26 August, from 11.30am-1pm. Creating postcards. For ages six to 11.

**North Somerset Museum, in Burlington Street, Weston-super-Mare, is open Monday to Saturday, 11am – 4pm.**

01934 621 028 [www.n-somerset.gov.uk/museum](http://www.n-somerset.gov.uk/museum)



# Arch is stunning focal point

A huge solid granite arch now stands tall over Weston's new-look promenade as a stunning focal point for the revamped seafront.

The eight-metre high self-supported structure is the icing on the cake for the three-year £29m seafront enhancements project run by North Somerset Council.

It took about four weeks to construct and will act as an entrance to and from Melrose car park, to encourage people onto the new promenade.

It is designed by Bristol-born artist John Maine RA, who also created the paved plaza in front of Knightstone Island and seating along the length of the sea wall to Royal Sands.

One side is dimpled and the other smooth, to reflect points which can be seen from the seafront.

Ian McFarlane, from granite masters Fyfe Glenrock, oversaw the project.

He said: "This has been a great project to work on and we haven't done anything like it before. It is a unique structure and believed to be the largest free-standing arch built using natural material in the UK.

"People have been so positive about it. Passers-by have sat on the wall watching us work, asking lots of questions."

The arch is made from 15 solid granite blocks, each weighing 6.5 tonnes.



It is being funded by grants from CABE's Sea Change art programme and the seafront enhancements project.

See next month's *Life* for a special feature celebrating the completion of the three-year seafront enhancements project.

[www.n-somerset.gov.uk/seafrontenhancements](http://www.n-somerset.gov.uk/seafrontenhancements)



# Queen's award for volunteer group



Environmental volunteers in North Somerset are celebrating after scooping a prestigious national award.

Backwell Environment Trust is one of a small number of groups to win this year's Queen's Award for Voluntary Service - the MBE for volunteer groups.

The group received the award for transforming two neglected woodlands into vibrant nature reserves which now contain many rare species.

Trustee Ian Chambers said: "We are all thrilled and honoured to have received this

prestigious national award for our efforts to restore and preserve the beautiful countryside surrounding the village of Backwell."

Winners were selected after nominations from members of the public. The group will receive a certificate signed by HM The Queen and a commemorative crystal, as well as being invited to a garden party at Buckingham Palace.

The Queen's Award for Voluntary Service launched in 2002 to recognise the outstanding contributions made by groups who give their time freely to benefit local communities. It is the highest honour that can be given to groups of this kind and is equivalent in status to the MBE.



# Stage two of the recycling revolution is on its way!

The second stage of North Somerset Council's recycling revolution starts this month. The second half of the district will start to receive their extra recycling box, food waste containers and wheeled bin or plastic sacks for rubbish, ready for their new services to start from mid-September.



An information pack and collection calendar will be delivered with the new containers to let people know what materials go in each one, and when collections begin.

Remember, for those people in stage two, you should not use your new wheeled bin, plastic sacks or food waste containers before your first specified collection because they will not be picked up.

Additional recycling materials such as plastics and cartons also won't be collected until the new recycling service starts.

For residents on the plastic sack scheme, a limited supply of sacks will be delivered every six months.

If you run out before your next delivery, extra sacks will not be supplied, so any non-recyclable rubbish would have to be taken to your nearest Recycling Centre.

To find out when your first new collection is you can use the postcode collection calendar search at [www.n-somerset.gov.uk/calendar](http://www.n-somerset.gov.uk/calendar)



# Food waste caddies – how can you keep them clean?

When your new services begin, we will collect all cooked and uncooked food in your food waste containers every week. Keeping your containers clean will make sure that they stay hygienic and don't smell.

You can use your small caddy to collect scraps from the kitchen, and keep the larger container outside. Empty the kitchen caddy regularly in to the large container.

Lining both the containers will also help keep things clean. You can use newspaper, kitchen roll or brown paper to wrap food and line your caddy, or you can buy compostable liners to keep the containers clean. Look out for the compostable logo (see image) on liners.

If you know of any other outlets in North Somerset that stock compostable liners, please contact Streets and Open Spaces on **01934 888 802** or [streetsandopenspaces@n-somerset.gov.uk](mailto:streetsandopenspaces@n-somerset.gov.uk)

For more information about food waste and how to keep your containers clean visit [www.n-somerset.gov.uk/foodwaste](http://www.n-somerset.gov.uk/foodwaste)



If the bags are not marked with the compostable logo then please do not use them in your food waste box. Please do not use plastic bags, or place any plastic in the containers, as they will not be emptied.

## You can buy compostable liners from the following outlets:

- Morrisons
- Sainsbury's
- Spar
- Tesco
- Waitrose

## Or online from:

- [www.caddiesandliners.co.uk](http://www.caddiesandliners.co.uk)
- [www.gardeningdelights.com](http://www.gardeningdelights.com)



# The final stage – blocks of flats of four or more

If you live in a block of flats of four or more households you will start receiving your new services in late Autumn, after stage two services have been rolled out to the second half of the district.



The council is introducing the new services to blocks of flats of four or more households at a later stage due to the bespoke nature of the service needed for them. There are about 14,000 flats in North Somerset, and each has a different amount of storage space, and varying numbers of flats in each block, meaning that the service provided for each has to be tailored to very different circumstances.

The council will get in touch with each block of flats individually to let residents know what containers will be provided, and when the new services will start. In the meantime, services will continue as at present.

For more information about the changes to recycling and waste collections go to [www.n-somerset.gov.uk/revolution](http://www.n-somerset.gov.uk/revolution)

 **recycle**  
for North Somerset

# Making the right choices



Exam results will be coming out this month and students across North Somerset will be biting their nails waiting for the news.

**connexions**

WEST OF ENGLAND

Young people now have access to more information than ever before through expanding technology but growing up can still be challenging and sometimes the choices are dazzling.

People have different learning styles so one of the most important decisions they can make is about their options at school and which paths to follow at 16 and 18 to make best use of their abilities.

To help pupils choose, every secondary school in North Somerset has a Connexions personal adviser to provide impartial information, advice and guidance on all aspects of a young person's life, including education, money, rights and health.



## Common questions...

- ✓ What options can I make in Year 9?
- ✓ Is school the only way to learn?
- ✓ How do I choose which course to do when there are so many different ones?
- ✓ What can I study at college and how do I choose where to go?
- ✓ What if I don't get the exam results I need?

Find out more information about making choices for the future, as well as advice on a range of subjects such as health, relationships or money, by visiting the Connexions West website at

**[www.connexionswest.org.uk](http://www.connexionswest.org.uk)**

You can also talk directly to Connexions personal advisers online through a webcam. Visit the online portal for support and advice for young people, parents and carers at **[www.connexions-direct.com](http://www.connexions-direct.com)**

**Connexions: 01934 644 443**



## Main routes through 14-19 education and training in 2013 and beyond



<http://www.cegnet.co.uk/14-19choices/>

All information correct at time of going to print (July 2010).

# Letters to the Editor

Send your letters to  
**Editor, North Somerset Life,  
 North Somerset Council,  
 Room 165, Town Hall,  
 Weston-super-Mare, BS23 1UJ** or  
 email [editor@n-somerset.gov.uk](mailto:editor@n-somerset.gov.uk)

Letters submitted without a valid name and address will not be considered for publication. Please tell us if you do not want your details published. Due to space restrictions, letters may be edited.

## Dear Editor,

Can you tell me please, is there a law about dogs on leads in the street?

The other morning a dog was running down a side road off its lead and chased a cat across the road into a front garden, crushing the flowers and running into a wire line between the gardens. If it had caught the cat and hurt it, could the dog owner face a court fine?

Apart from this, horse riders and cars came out, so an accident with an uncontrolled dog could have occurred.

I do beg of people with dogs, please keep them on a lead under control. Most people do, it's just the odd one.

**Vera Hilton, Hutton**

## Dee Mawn, principal environmental health officer:

By law all dogs must be kept under close control. This, however, doesn't have to be on a lead unless it is in a place where they must, such as children's play areas or designated parks.

A dog running loose down a street and ending up in somebody's front garden would most certainly be out of control, and if it then behaved aggressively could also be considered as 'dangerously out of control'. In some circumstances the council could take legal proceedings against the owner under the Dogs Act 1871. The owner would not be ordered to pay a fine but the court may insist the dog is always kept on a lead and/or muzzled in public.

If there is no owner with the dog at the time, it would be regarded as stray and if caught taken to kennels. The owner would then have to pay a fine and kennelling fees to have the dog back.

If the dog caused an accident the owner may be liable for damages. Therefore dog owners should always insure their animals so that in the unfortunate event that the dog causes an accident, they are covered for any loss or damages incurred.

## Dear Editor,

We were pleased to see one of our favourite walks in July's *Life*.

If the walk is a little long for some, an even shorter pedestrian friendly loop Yatton-Claverham is now available thanks to the funding of new kissing gates etc by the Yatton Parish Plan Steering Group.

This short cut links the Catholic Church, Claverham Road with Chapel Lane. This section then joins the *Life* walk. It has been upgraded with the co-operation of the landowners and, as cattle use the fields, the usual discretion is requested if dog walking.

**A Baber, Yatton Ramblers**

## Editor's reply:

Many thanks for your suggestion. Also note Wood Hill and Smallway into Yatton operate on a one way system.

[www.n-somerset.gov.uk/tic](http://www.n-somerset.gov.uk/tic)

# Tide times for Weston-super-Mare

## Tide Facts

	Date	High water		Low water		High water		Low water					
		Time	Height (M)	Time	Height (M)	Time	Height (M)	Time	Height (M)				
Approximate high water times at:		<b>am</b>				<b>August 2010</b>				<b>pm</b>			
Clevedon: 10 min	1 Sun	11:02	10.39	04:36	1.70	23:19	10.18	16:45	1.94				
Portishead: 18 min	2 Mon	11:33	9.87	05:09	2.01	23:52	9.61	17:19	2.26				
later than Weston-super-Mare.	3 Tue	-	-	05:47	2.34	12:08	9.38	18:02	2.59				
	4 Wed	00:34	9.13	06:35	2.67	13:00	8.98	19:02	2.93				
	5 Thur	01:42	8.76	07:46	3.00	14:27	8.81	20:35	3.18				
	6 Fri	03:23	8.88	09:41	2.95	16:01	9.33	22:22	2.70				
	7 Sat	04:44	9.63	10:51	2.26	17:15	10.28	23:21	1.97				
Weather conditions which differ from the average will have an effect on the differences between predicted and actual tide times.	8 Sun	05:52	10.59	11:48	1.64	18:17	11.25	-	-				
Strong winds can hold the tide in or push the tide out. Air pressure can also cause fluctuations in predicted levels.	9 Mon	06:51	11.47	00:20	1.39	19:11	12.05	12:46	1.13				
	10 Tue	07:40	12.14	01:15	0.88	20:00	12.61	13:37	0.68				
	11 Wed	08:28	12.58	02:05	0.46	20:45	12.96	14:25	0.35				
	12 Thur	09:10	12.79	02:51	0.21	21:29	13.06	15:10	0.21				
	13 Fri	09:53	12.72	03:37	0.19	22:11	12.85	15:55	0.31				
	14 Sat	10:34	12.32	04:18	0.45	22:52	12.27	16:35	0.66				
	15 Sun	11:15	11.61	04:57	0.92	23:34	11.40	17:13	1.18				
	16 Mon	11:57	10.70	05:34	1.50	-	-	17:51	1.77				
	17 Tue	00:19	10.40	06:13	2.10	12:44	9.79	18:37	2.39				
	18 Wed	01:10	9.45	07:02	2.70	13:44	9.04	19:39	3.00				
	19 Thur	02:21	8.76	08:19	3.24	15:09	8.73	21:26	3.24				
	20 Fri	03:54	8.67	10:05	3.15	16:40	9.17	22:43	2.75				
	21 Sat	05:18	9.31	11:12	2.53	17:46	10.04	23:38	2.09				
Tidal predictions for Weston-super-Mare have been computed by the Proudman Oceanographic Laboratory.	22 Sun	06:13	10.15	-	-	18:34	10.82	12:00	1.91				
Copyright reserved.	23 Mon	06:58	10.78	00:21	1.60	19:15	11.30	12:40	1.52				
	24 Tue	07:36	11.13	00:59	1.35	19:50	11.51	13:15	1.36				
	25 Wed	08:08	11.29	01:34	1.27	20:22	11.59	13:49	1.32				
	26 Thur	08:37	11.39	02:07	1.23	20:52	11.63	14:20	1.30				
	27 Fri	09:04	11.47	02:37	1.20	21:19	11.62	14:50	1.29				
	28 Sat	09:32	11.45	03:08	1.21	21:48	11.44	15:19	1.35				
	29 Sun	10:00	11.20	03:37	1.33	22:18	11.01	15:46	1.54				
	30 Mon	10:29	10.73	04:05	1.61	22:46	10.42	16:13	1.86				
	31 Tue	10:57	10.16	04:31	1.96	23:17	9.80	16:41	2.19				

You can buy 2010/11 tide timetables from **Weston-super-Mare Tourist Information Centre for £1.50.**

	Date	am		September 2010		pm			
		Time	Height (M)	Time	Height (M)	Time	Height (M)		
	1 Wed	11:31	9.63	05:03	2.29	23:56	9.24	17:20	2.51
	2 Thur	-	-	05:49	2.63	12:20	9.12	18:19	2.89
	3 Fri	01:03	8.73	07:00	3.03	13:47	8.76	19:53	3.25
	4 Sat	02:51	8.69	09:05	3.17	15:35	9.20	22:00	2.85

# Music mania in Weston!

Thousands of music fans descended on Weston-super-Mare last month for the annual T4 on the Beach spectacular.

Rapper Dizze Rascal kicked off the five-hour extravaganza which included performances from chart-toppers The Saturdays, N-Dubz, Alexandra Burke and Pixie Lott in front of a crowd of about 45,000 and millions of people watching on TV.

This is the sixth year the festival has visited the town and despite the heavy rain for the last half-hour, boy band sensation JLS hit the high note for a screaming finale.



Jason Derulo



Kelis



Alexandra Burke

Dizze Rascal



Pixie Lott



N-Dubz



JLS