

North Somerset Strategy for the Mental Health and Psychological Wellbeing of Children and Young People (Including Learning Disabilities) 2004-2008

Population Needs Analysis (December 2004)

1 INTRODUCTION

This population needs analysis has been prepared as part of the review of the North Somerset Strategy for improving the mental health and psychological wellbeing of children and young people. This document includes an analysis of the children's populations in North Somerset and the risk factors associated with mental health and psychological wellbeing needs. The population and other figures used are taken from the following:

- Office for National Statistics
- Office of the Deputy Prime Minister
- Audit Commission
- North Somerset Council Education & Social Care statistics
- Department for Education & Skills

2 SUMMARY OF KEY POINTS

- The children and young people's population of North Somerset in 2001 was 43,632.
- The proportion of people from black and other minority ethnic communities (BOME) in North Somerset is low compared to the national average and on a par with the regional average. Approximately 2.4% of the children and young people's population are from BOME groups.
- The overall population of North Somerset is projected to increase by 11% over the 10 years 2001 – 2011 with the 0 – 19 population predicted to rise by 8.4% by 2006 and then plateau to give a rise by 2011 of 8.7% on the 2001 figure.
- The number of under 5s is projected to increase by approximately 10% over the next 5 years to 2006, as is the 5 to 9 age group. However, the population of 10 - 14 year olds is projected to decrease slightly by 2.9% and then slowly climb back up to current levels. The 15 – 19 age group is projected to rise sharply by 2006 by 2.4% on 2001 level and continue to rise until 2011 with an overall increase of 21% on 2001 levels at that time.
- The ONS mental health prevalence survey of children and adolescents found that 9.5% of all children aged 5 – 15 years had a mental disorder: 5% had clinically significant conduct disorders, 4% were assessed as having emotional disorders (anxiety and depression), 1% were rated as hyperactive and 0.5% had less common disorders (autistic spectrum disorders, tics and eating disorders). The prevalence rates were greater among boys than girls and higher for older children than younger ones.
- Almost a half of children with a mental disorder in the ONS survey had been in contact with a GP in the past 12 months for any reason compared with just over a third of children with no disorder. Children with a disorder were more likely to have been taken to A&E than those without a disorder, and on more than one occasion. One half of the children with mental disorders had sought help from

educational services, a quarter had used the specialist health care services and one fifth had contact with the social services.

- Using national prevalence rates it can be estimated that approximately 2,376 children aged 5-15 (9.5%) have a mental disorder in North Somerset.
- The prevalence rates of mental disorders are greater among children:
 - In lone parent compared with two parent families (16% compared with 8%)
 - In reconstituted families rather than those with no step children (15% compared with 9%)
 - In families with 5 or more children compared with two children (18% compared with 8%)
 - In families with neither parent working compared with both parents at work (20% compared with 8%)
 - In families with a gross weekly household income of less than £200 compared with £500 or more (16% compared with 6%)
 - Whose parents are social sector tenants compared with owner occupiers (17% compared with 6%)
- However, because of the relatively lower risk factors in North Somerset it is likely that the estimated number of 5 – 15 year olds with mental disorders will be reduced from the estimated figure above.
- About 1 in 7 16 – 19 year olds were assessed as having a neurotic disorder in the ONS survey of adults living in private households. The most common neurotic disorder, experienced by 8%, was mixed anxiety and depressive disorder. Less than 2% of people had each of the other neurotic disorders (Generalised anxiety disorder, depressive episode, phobias, obsessive-compulsive disorder and panic disorders).
- Using this data, there are an estimated 150 women and 32 men aged 16-19 likely to have significant neurotic symptoms of which 71 women and 13 men are likely to require treatment for neurotic disorders in North Somerset.
- There are an estimated 20 women aged 16-19 with probable psychotic disorder in North Somerset.
- In the ONS adults survey approximately 40% of 16-19 year olds were assessed as having a hazardous pattern of drinking, whilst 7% of women and 16% of men had mild alcohol dependence plus 3% of men had moderate dependence. Nearly 1 in 10 16-19 year olds were assessed as being drug dependent to some degree. The risk factors for substance misuse and mental health problems are similar, and there are high rates of co-existence of both types of problem.
- Looked after children are particularly vulnerable to mental health problems, they are about 5 times more likely to have any mental disorder than those living in private households, and about 7 times more likely to have a conduct disorder. About 45% of looked after children aged 5 – 17 years had a mental disorder: 37% conduct disorders; 12% emotional disorders; 7% hyperactive and 4% had the less common disorders. This prevalence rates represents 62 children looked after in North Somerset with a mental disorder.
- Children with a significant learning disability are three to four times more likely to experience mental health problems than children without a disability.
- Children suffering physical illness, especially chronic conditions such as diabetes and cystic fibrosis, very severe conditions such as leukaemia, brain injury and children with sensory deficits are at higher risk of developing mental health problems.

- Young people within the criminal justice system are estimated to be three times more likely to have mental health problems than those in the general population.
- Children and young people living in hostels and bed and breakfast accommodation as well as those who sleep rough are at higher risk of developing mental health problems.
- Although North Somerset is generally considered to be an area of relatively low deprivation, there are 5 areas where there is a strong correlation of risk factors. These wards, in order of highest combined levels of risk factors first, are:
 1. Weston-super-Mare South
 2. Weston-super-Mare North Worle
 3. Weston-super-Mare Central
 4. Portishead West
 5. Weston-super-Mare South Worle
- Special educational needs, low achievement in school, lack of commitment to school and school non-attendance including truancy and exclusion may be an indication of children's emotional and behavioural difficulties or other problems at home. Children with a mental disorder are three times more likely to have officially recognised special educational needs (SEN) than other children, are seven times more likely to have a statement of SEN, twice as likely to have been absent from school for 11 days or more in a term, eighteen times more likely to have been excluded from school and much more likely to have obtained no qualifications from school.
- Children's performance and attendance at school is affected by the social and economic environment from which they are drawn, and the schools with most difficulties are serving children from the most disadvantaged areas. As well as all the special schools, the following schools are likely to have higher prevalence rates of children with mental health and emotional wellbeing problems :-

Broadoak Secondary, Wyvern Secondary, Oldmixon Primary, Walliscote Primary, Bourneville Infants, Bourneville Juniors, Christchurch Primary, Windwhislte Primary , Beckett Primary.

Note : These schools are involved in the local Behaviour Improvement Programme, a government initiative which aims to improve attend reduce exclusions and enhance the life chances of the children and young in these schools. A key aim of the programme is to introduce multi-agency teams, which may include a mental health specialist to support schools in developing an holistic approach to behaviour.

3 POPULATION AND CENSUS DATA

3.1 Overall population

The overall population of North Somerset, as measured in the 2001 census, was 188,564, which showed an increase of 4.9% since the 1991 census.

3.2 Children’s population

The number of children and young people aged 0 – 19 in North Somerset, as measured in the 2001 census, was 43,632, which represents approximately 23% of the total population. The proportion of children in the population is lower than the national average (25.1%) but on a par with the average for the South West (23.8%).

North Somerset Children and Young People Population 2001				
Age Range	Females	Males	Total	% of population
0 to 4	5,034	5,296	10,330	5.5%
5 to 9	5,293	5,692	10,985	5.8%
10 to 14	5,676	6,084	11,760	6.2%
15 to 19	4,985	5,572	10,557	5.6%
Total 0 - 19	20,988	22,644	42,632	23.1%

Adapted from Table KS02 Age Structure, 2001 Census

There is a slight gender imbalance in the children’s and young peoples population, which comprises 48.1% females and 51.9% males and this is most marked in the 15 to 19 age group, as shown in the graph below (5.6% difference).

The breakdown of the children’s and young peoples population by ward is shown in Appendix 1. The wards with the highest numbers of children living in them are

- Clevedon Yeo
- Weston-super-Mare South
- Weston-super-Mare North Worle
- Portishead West
- Nailsea East
- Weston-super-Mare South Worle

Which between them account for 28% of the 0 - 19 population in North Somerset.

3.3 Ethnicity

The proportion of people from ethnic minorities in North Somerset is low compared to the national average and on a par with the regional average. 2001 census data shows that 3.26% of the total population is from a minority ethnic group, ie not White British, whilst the non-white population is 1.38% of the total (approximately 2,600 people). This compares to a national average of 9.08% and a South West average of 2.30% for black and other ethnic minority groups. Ethnic minority communities are scattered throughout North Somerset but tend not to be found in the rural areas.

North Somerset Children and Young People Population by Ethnic Group				
Age Range	Number 'White British'	% 'White British'	Number Not 'White- British'	% Not 'White- British'
0 to 4	10,104	96.46%	371	3.54%
5 to 9	10,733	96.57%	381	3.43%
10 to 14	11,532	96.72%	391	3.28%
15 to 19	10,297	96.27%	399	3.73%
Total 0 - 19	42,666	96.51%	1,542	3.49%

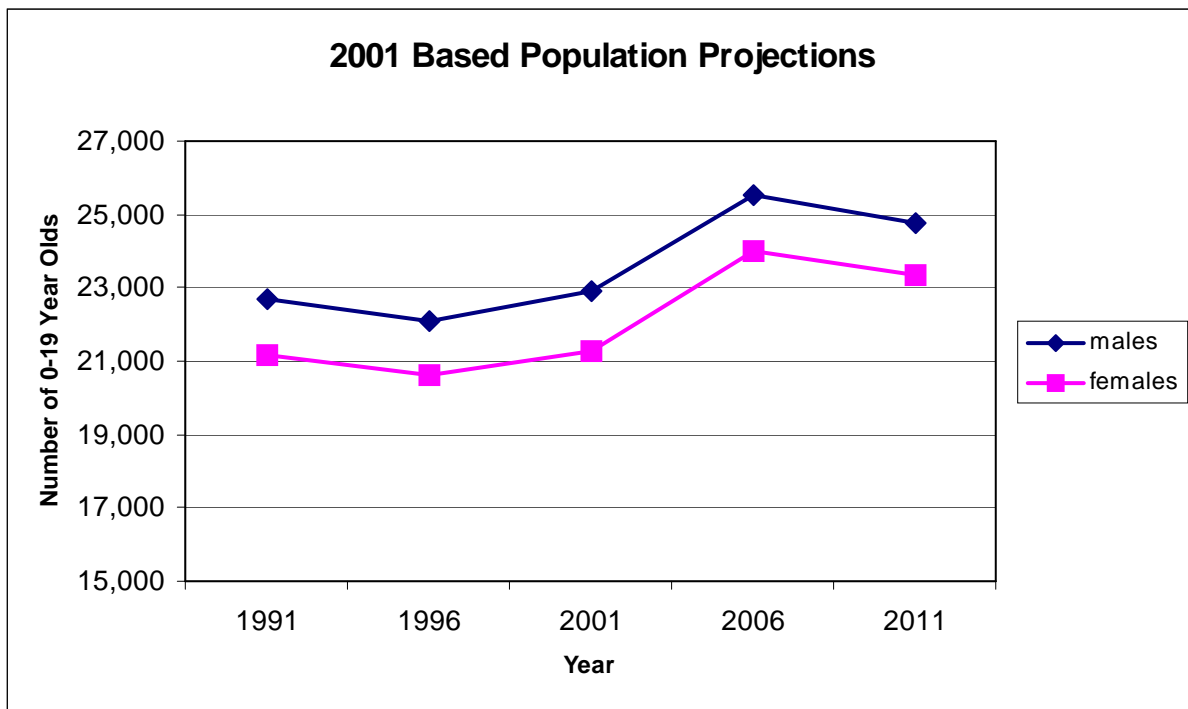
Adapted from Table KS101 Sex and Age by Ethnic Group, 2001 Census

For the children's population of North Somerset, the proportion from black and other ethnic minorities is higher than that for the total population, as shown in the table above. Out of the total population 42,666 are described as White British, 76 White Irish and 415 White Other. Of the 2,609 non-white population of North Somerset under 20, 59% are described as of mixed origin, 17.9% Asian or Asian British, 4.1% Black or Black British, 13.9% Chinese, and 5.1% as from another ethnic group.

Population projections

Population projections at local authority level, disaggregated by age or gender are available from the 2001 census. The projections indicate young people population up until 2011.

The overall population of North Somerset is projected to increase by 13% between 2001 and 2011. The children and young people's population projections indicate a rise of 9% over the same period (ages 0-19).



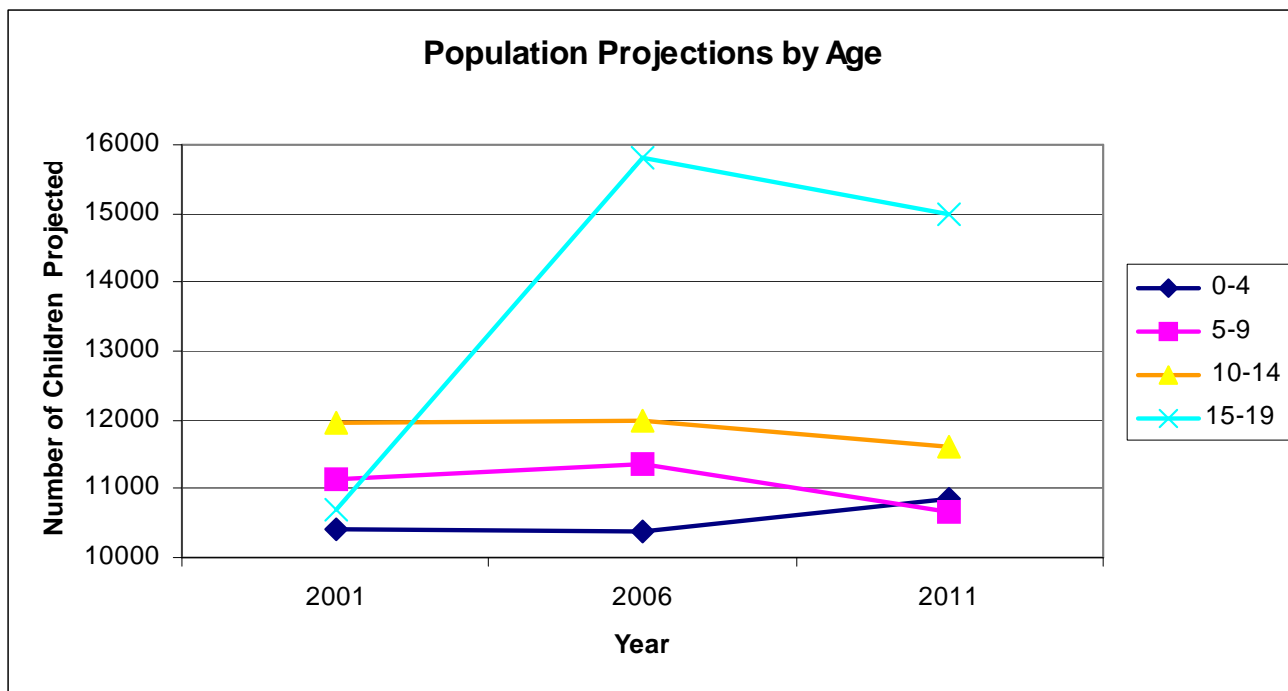
North Somerset Children and Young People Population Projections							
Overall projections		Specific age group projections					
Year	Population	0-4 age group	5-9 age group	10-14 age group	15-19 age group	All 0 – 19	All 0 – 19 % change from 2001
2001	188840	10408	11140	11943	10704	44195	0%
2006	207721	10383	11363	11975	15817	49539	12.1%
2011	213905	10868	10671	11608	15001	48149	8.9%

2001 based English subnational population projections

The most marked change in the children's population is projected to be for older teenagers. The 15 – 19 age group is projected to increase sharply in the next 3 years and continue to rise until 2011, when it is projected to be 15,000, which is a 40% increase on 2001 levels.

The population projections for 2001 until 2011 for the different age groups, based on the 2001 English subnational population projections, are shown in the graph below.

The 15-19 projections are suspected to be flawed since, even though the old teenagers were born in a period of higher birth rate, the rate of population growth generally in the area is more in line with the 0.5% increases experienced annually in recent decades.



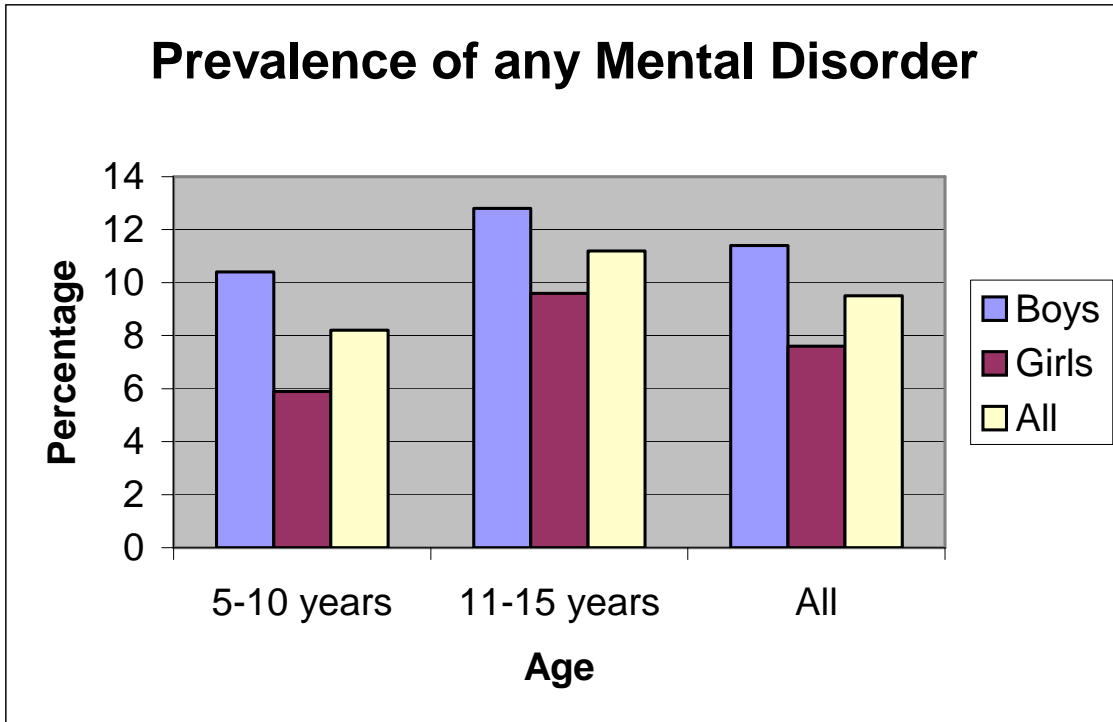
4 CHILDREN AND YOUNG PEOPLE WITH MENTAL HEALTH PROBLEMS

4.1 Prevalence of children with mental disorders

It is possible to estimate the proportion of the children's population with mental health problems by comparing population projections with Office for National Statistics prevalence rates for children with mental disorders. The ONS mental health prevalence survey (Meltzer et al 2000a), comprised 5 – 15 year olds living in private households in England, Scotland and Wales. The survey uses the term, mental disorders, as defined by the ICD-10 (International Classification of Diseases, tenth revision) to imply a clinically recognisable set of symptoms or behaviour with strict impairment criteria – the disorder causing distress to the child or having a considerable impact on the child's day to day life. Four broad categories of mental disorder were identified and each included a range of specific disorders as follows:

- **Emotional disorders - anxiety disorders and depression:** Anxiety disorders include; separation anxiety, specific phobia, social phobia, panic, agoraphobia, post traumatic stress disorder (PTSD), obsessive-compulsive disorder (OCD), generalised anxiety disorder (GAD) and other anxiety.
- **Conduct disorders:** oppositional defiant disorder, conduct disorder (family context), unsocialised conduct disorder, socialised conduct disorder and other conduct disorder.
- **Hyperkinetic disorder:** hyperkinesis and other hyperkinetic disorder.
- **Less common disorder:** pervasive development disorder, psychotic disorder, tic disorders, eating disorders and other psychiatric disorders.

The survey found that 9.5% of all children aged 5 – 15 years had a mental disorder: 5% had clinically significant conduct disorders; 4% were assessed as having emotional disorders and 1% were rated as hyperactive. As their name suggests, the less common disorders were only attributed to half a percent of the population. However, the prevalence rates varied with age and sex of the children as shown in the graph below. The prevalence rates were greater among boys than girls and higher for older children than younger ones.



The findings from the national prevalence survey can be applied to the local population in order to provide an estimate of the expected profile of mental health problems in North Somerset. Using the 2001 census figures, it can be estimated that approximately 2,376 children aged 5-15 (9.5%) have a mental disorder in North Somerset. This can be further broken down as shown in the tables below.

Prevalence and Numbers of 5–10 year olds with Mental Disorders (2001)			
	Boys	Girls	Total
Emotional disorders	3.3%	3.3%	
	227	213	440
Conduct disorders	6.5%	2.7%	
	447	174	621
Hyperkinetic disorders	2.6%	0.4%	
	179	26	205
Less common disorders	0.8%	0.2%	
	55	13	68
Estimated numbers of 5-10 year olds with any mental disorder*	10.4%	5.9%	
	715	380	1095*

* the overall rate includes some children who have more than one type of disorder

The number of 5 – 10 year olds with mental disorders can be estimated at 1095 children and this is likely to decrease based on pop projections in the next few years according to population projections.

Prevalence and Numbers of 11–15 year olds with Mental Disorders (2001)			
	Boys	Girls	Total
Emotional disorders	5.1%	6.1%	
	306	342	648
Conduct disorders	8.6%	3.8%	
	516	213	729
Hyperkinetic disorders	2.3%	0.5%	
	138	28	166
Less common disorders	0.5%	0.7%	
	30	39	69
Estimated numbers of 11-15 year olds with any mental disorder*	12.8%	9.6%	
	768	538	1306*

* the overall rate includes some children who have more than one type of disorder

The number of 11 – 15 year olds with mental disorders can be estimated at 1306 children and this is likely to increase in the next few years according to population projections.

The ONS survey looked at prevalence by ethnic group. Nearly 10% of white children and 12% of black children were assessed as having a mental health problem whereas the prevalence rates among Asian children were 8% of the Pakistani and Bangladeshi and 4% of the Indian samples. However, the report cautioned that ethnic differences were difficult to interpret because of the small numbers in the sample who regarded themselves as belonging to particular ethnic groups.

4.2 Prevalence of young people with mental disorders

4.3 The ONS carried out a survey of adults living in private households (Meltzer *et al* 2000b), the main aim of which was to estimate the prevalence of psychiatric morbidity according to diagnostic categories among the adult household population of Great Britain. The survey covered people aged 16 – 74 years living in private households in England, Wales and Scotland. However, this report will only discuss the data in relation to 16-19 year olds. It is also important to note the limitations of any survey of mental health disorders that exclude those people not living in private households. Those people excluded from such a survey would include the long-term homeless, those of no fixed abode and those in prisons or hostels, among whom the incidence of mental disorders, including drug and alcohol abuse, could be expected to be higher than found in the general population. It might therefore be assumed that the findings of the ONS survey of psychiatric morbidity among adults in private households are an underestimate of the true scale of psychiatric morbidity.

The survey of psychiatric morbidity among adults gives an indication of the prevalence of mental ill health for 16-19 year olds. However, it is difficult to compare the data with the survey for 5-15 year olds as different categories have been used for the adult study. The disorders covered in the adult's survey were neurotic disorders, such as depression, anxiety or phobias and severe mental disorders, such as schizophrenia, as well as alcohol and drug dependency.

- **Neurotic Disorders:** Neurotic disorders are characterised by a variety of symptoms such as fatigue and sleep problems, forgetfulness and concentration difficulties, irritability, worry, panic, hopelessness, and obsessions and compulsions which are present to such a degree that they cause problems with daily activities and distress.
- **Personality Disorder:** Obsessive compulsive personality disorder, avoidant, schizoid, paranoid, borderline and antisocial personality disorders.
- **Psychotic Disorders:** Psychoses are disorders that produce disturbances in thinking and perception that are severe enough to distort the person's perception of the world and the relationship of events within it, such schizophrenia and manic depression.
- **Drug and alcohol misuse and dependency:** Alcohol Use Disorders Identification Test (AUDIT) was used to assess hazardous drinking. Hazardous alcohol use is a pattern of drinking carrying with it a high risk of damage to health in the future. The Severity of Alcohol Dependence Questionnaire (SAD-Q) was also used to identify those who were considered to be dependent on alcohol. Drug dependency in the year prior to the interview was also assessed.

Overall the survey found that 16% of all people were assessed as having a neurotic disorder in the week before the interview. The most common neurotic disorder, experienced by 9% of people, was mixed anxiety and depressive disorder. Generalised anxiety disorder was next most commonly found at 4%. Less than 2% of people had each of the other neurotic disorders (phobias, obsessive-compulsive disorder and panic disorders). However the prevalence rates varied depending on age and gender as shown in the table below.

Prevalence rate and estimated numbers of young people aged 16-19 years in North Somerset with Neurotic Disorders						
Type of neurotic disorder	Women		Men		All	
	Rate	Number	Rate	Number	Rate	Number
Mixed anxiety and depressive disorder	12.4%	485	5.1%	224	8.3%	688
Generalised anxiety disorder	1.1%	43	1.6%	70	1.4%	116
Depressive episode	2.7%	106	0.9%	39	1.7%	141
All phobias	2.1%	82	0.6%	26	1.3%	108
Obsessive compulsive disorder	0.9%	35	0.9%	39	0.9%	75
Panic disorder	0.6%	23	0.5%	22	0.5%	41
Any neurotic disorder*	19.2%	750	8.6%	377	13.3%	1103

* the overall rate includes some people who have more than one type of neurotic disorder

The severity of the disorder will also vary. The total score on the Clinical Interview Schedule (CIS-R) gives an indication of the overall severity of symptoms; a score of 12 or more indicates the presence of significant neurotic symptoms while a score of 18 or more indicates symptoms of a level likely to require treatment. In the survey 20% of women and 8.5% of men aged 16 – 24 had scores of 12 or above on the CIS-R, while 9.5% and 3.4%, respectively, had scores of 18 or more. Therefore, it is estimated that 79 women and 19 men aged 16-19 are likely to have significant neurotic symptoms and a further 71 women and 13 men are likely to require treatment for neurotic disorders in North Somerset.

Overall, about 1 in 25 adults were assessed as having a personality disorder of some kind (4.4%) and the prevalence was slightly higher amongst men than women. The most prevalent type of personality disorder was obsessive compulsive personality disorder at

1.9%. Avoidant, schizoid, paranoid, borderline and antisocial personality disorders each had a prevalence of less than 1%. Unfortunately it is not possible to estimate the numbers of 16-19 year olds likely to have a personality disorder because the age banding used in the report are adults aged 16-34.

The prevalence rate for probable psychotic disorder in the year prior to interview was 0.2% for 16-19 year olds, which was broken down into 0.5% for women and 0% for men. Applying this prevalence rate to the 16-19 year old population of North Somerset gives an estimated 20 women with probable psychotic disorder.

In the ONS survey 39% of 16-19 year olds were assessed as having a hazardous pattern of drinking during the year before the interview. The prevalence of hazardous drinking was higher among men (45%) than among women (32%) of that age group. Overall 7.4% of people had some degree of alcohol dependence, with higher rates among men than women and highest in the younger age groups – 7.4% of women aged 16-19 with mild dependence and 19% of men aged 16-19 with some degree of dependence: 16.4% with mild dependence and 2.6% with moderate dependence. The use and abuse of drugs and alcohol becomes a significant issue among adolescents: 29% of 13 year olds report drinking alcohol once a week, and 16% of 16 year olds regularly use solvents or illegal drugs, with 17% of teenagers using Cannabis (Fonagy et al 2000). In the ONS survey those dependent on drugs had a much younger age profile than those not dependent on drugs, 32% of men and 22% of women aged 16-19 reported using illegal drugs in the year prior to interview. Cannabis was the drug mentioned most commonly by both men and women (10% overall), while amphetamines, cocaine and ecstasy were the next most frequently mentioned by both groups (2% overall, for each drug). Nearly 1 in 10 16-19 year olds were assessed as being drug dependent to some degree, 12.6% of men and 5.9% of women.

The risk factors for substance misuse and mental health problems are similar, and some sources estimate high rates of co-existence of both types of problem. The ONS study of children and adolescents (Meltzer et al 2000a) suggests that 24% of 11-15 year olds who drink alcohol more than once a week have a mental disorder, which is three times higher than those who had never drunk any alcohol. It was also suggested that approximately 50% of young people frequently using Cannabis have a mental disorder, compared with one fifth of those using Cannabis less than once a month, and 10% of those who never use Cannabis.

5 USE OF SERVICES

In the ONS survey of children and adolescents (Meltzer et al 2000a), parents were asked about their children's use of services and they were asked to specify which health, social or educational service they sought help from. Children with mental disorders were more likely to have used services than other children. Approximately 70% of children with mental disorders had sought help from health, social or educational services, for example GP, paediatrician, social worker or educational psychologist, although this varied with type of disorder: 63% of children with an emotional disorder had been in contact with services, increasing to about 76% of children with behavioural problems and 81% of those with hyperkinetic disorders, whilst nearly all the children with the less common disorders had been seen by at least one of the services. This is largely due to parents of children with emotional disorders often being unaware of their child's problems; children with emotional disorders may tend to keep their worries and anxieties to themselves. Parents also tend to take their child's emotional problems less seriously.

The table below uses the prevalence rates from the ONS survey and gives the estimated number and percentage of children aged 5-15 expected to access particular types of service.

Estimated percentage and number of children aged 5-15 with mental disorders by service used										
Service used	Emotional		Conduct		Hyperkinetic		Less common		Any disorders	
	Rate	No.	Rate	No.	Rate	No.	Rate	No.	Rate	No.
Primary Health Care (eg GP or HV)	40%	435	38%	513	46%	171	67%	92	40%	950
Specialist health care eg paediatrician or child guidance clinic	21%	228	26%	351	38%	141	60%	82	27%	642
Social Services eg social worker	16%	174	27%	365	23%	85	25%	34	20%	475
Education eg teacher or educational psychologist	43%	468	55%	743	67%	249	72%	99	50%	1188
Alternative therapist	6%	65	5%	68	4%	15	25%	34	6%	143
Other specialist services	7%	76	4%	54	4%	15	12%	16	6%	143
Consulted GP and had contact with a specialist service	33%	359	33%	446	41%	152	58%	79	34%	808
Contact with specialist service only	23%	250	38%	513	35%	130	29%	40	31%	737
Consulted GP only	7%	76	5%	68	5%	19	9%	12	6%	143
Neither consulted GP nor had contact with specialist services	37%	402	24%	324	19%	70	4%	5	30%	713

6 RISK FACTORS

Kurtz (1996) and Pithouse (2003) suggest that applying prevalence rates for mental health problems to a population can only indicate an initial estimate of the likely level of need in any one area. They propose that epidemiological data should therefore be complemented by data about populations at particular risk, which may offer more insight into potential areas of need. This is particularly the case for Tiers 1 and 2, where family and environmental factors may play a more important role in relation to needs and strengths.

6.1 Children looked after

Looked after children are particularly vulnerable to mental health problems, including severe and enduring disorders (Richardson 2002). The ONS mental health prevalence survey (Meltzer et al 2003b) comprised 5 – 17 year olds looked after by local authorities in England. The survey of looked after children used the same terms and four broad categories of mental disorder as the earlier survey for private households (see section 4.1).

The survey found that 45% of looked after children aged 5 – 17 years had a mental disorder: 37% had clinically significant conduct disorders; 12% were assessed as having emotional disorders, 7% were rated as hyperactive and the less common disorders were attributed to 4% of the looked after population sampled. The rates varied by age and gender as shown in the table below. Children looked after by local authorities are about 5 times more likely to have any mental disorder than those living in private households, and about 7 times more likely to have a conduct disorder.

Percentage of children looked after with each mental disorder												
	5 – 10 year olds			11 – 15 year olds			16 – 17 year olds			All children		
	Boys	Girls	All	Boys	Girls	All	Boys	Girls	All	Boys	Girls	All
Emotional disorders	13.4	8.0	11.0	8.4	16.1	11.9	8.0	19.5	12.7	10.0	14.0	11.7
Conduct disorders	44.0	27.4	36.5	45.5	34.5	40.5	31.5	27.8	30.0	42.0	30.8	37.0
Hyperkinetic disorders	15.9	5.4	11.1	10.9	2.4	7.1	2.4	-	1.4	10.7	3.0	7.3
Less common disorders	4.6	-	2.5	8.2	1.5	5.2	1.6	3.6	2.4	5.6	1.4	3.7
Any disorder*	49.6	33.4	42.3	54.7	42.8	49.3	37.8	40.0	38.7	49.4	39.0	44.8

* the overall rate includes some children who had more than one type of disorder

This prevalence rate of 44.8% represents 76 children looked after in North Somerset with a mental disorder. There were 160 children looked after in North Somerset as at 31st March 2003 and the number of looked after children in North Somerset has been stable over the last few years. Department of Health national statistics indicate that North Somerset looked after approximately 39 children per 10,000 population aged under 18 in the year 2002/03 and 42 per 10,000 for 2003/04. These figures are lower than the national average, there were 55 children looked after per 10,000 population nationally in 2003/04 and also lower than North Somerset's comparator group, which averaged 44.5 for 2003/04.

Locally there is a higher proportion of older children looked after (aged over 10) than nationally or compared to North Somerset's comparator group. 10 – 15 year olds made up 45% of North Somerset's looked after population in 2002/03 compared to 43% nationally and 16 – 17 year olds comprise 16% of the population compared to 16% nationally.

Of the 160 children looked after on 31st March 2003, 59% were male and 41% female.

6.2 Children with a learning disability

Children with a significant learning disability are three to four times more likely to experience mental health problems than children without a disability. These children are generally at increased risk of developing mental health problems, particularly at times of stress and change, including periods of transition, in education, employment or relationships. At these times emotional difficulties, such as anxiety and depression and behavioural difficulties are particularly common (Emerson 2002). The independent inquiry (Foundation for People with Learning Disabilities 2002) into meeting the needs of people aged 13-25 with learning disabilities, identified that young people with learning disabilities are disproportionately vulnerable to many of the known risk factors for mental illness, including poverty, abuse, bullying, low self-esteem and physical ill-health.

6.3 Children with a physical illness

Children suffering physical illness, especially chronic conditions such as diabetes and cystic fibrosis, and very severe conditions such as leukaemia – even after successful treatment – are at higher risk of mental health problems and disorders. Children with sensory deficits such as sight and hearing loss are at special risk as are particularly, children who suffer brain injury. The risk of mental disorder in children with a physical illness has been assessed as being two to three times the average population prevalence if the physical illness is combined with disability (NHS Health Advisory Service 1995).

6.4 Children who are involved in offending

Young people within the criminal justice system are estimated to be three times more likely to have mental health problems than those in the general population. Those who have committed serious offences, and find themselves in secure accommodation are particularly likely to require mental health services (Hagell 2002). Of the young offenders surveyed about their health and mental health, 48% said that they often felt miserable or sad; 24% said they often had problems eating or sleeping; 10% had deliberately harmed themselves. Research suggests that prevalence of mental health problems for young people in contact with the criminal justice system range from 25 to 81%, being highest for those in custody. Figures in the literature indicate the rates of mental health problems to be at least three times as high for those within the criminal justice system as within the general population.

6.5 Children who are homeless

There is considerable evidence of a high prevalence of psychiatric disorder among homeless youth (Stephens 2002). Mental health problems are eight times as high for young people living in hostels and bed and breakfast accommodation and eleven times higher for those who sleep rough, compared to the general population. Prevalence of mental disorders increases as quality and security of housing decreases and younger people are the most adversely affected. Access to specialist CAMHS may not be easy for homeless young people and many rely excessively on acute rather than preventative services. Crises tend to occur during un-social hours and provision needs to be flexible enough to respond to this.

6.6 Parental ill-health

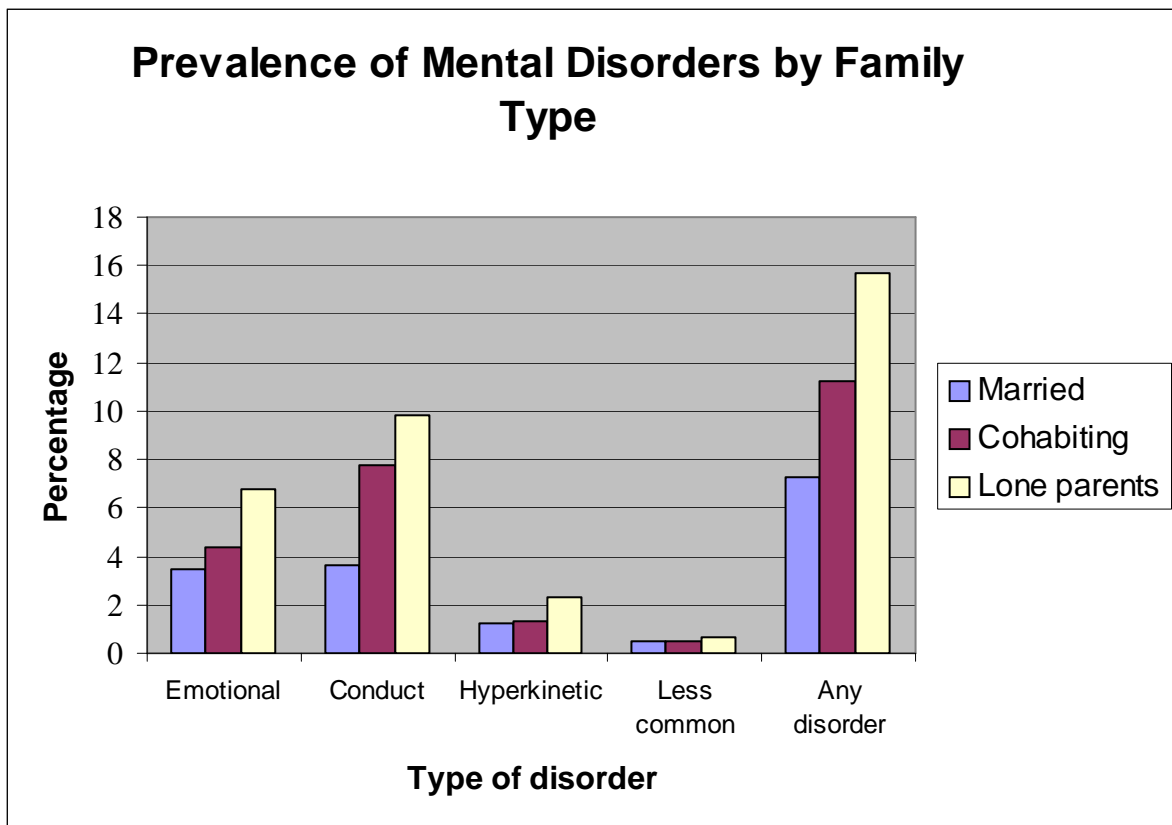
The physical and mental ill-health of parents is a consistent theme in the research literature relating to children at risk of significant emotional harm. Falkov (1997) reviewed the literature on parental psychiatric disorder and found that insecure attachment, developmental delay, psychopathology, educational and social difficulties had all been documented, predominantly in children with depressed mothers, but also in children whose parents had other psychiatric disorders.

A recent report from the NSPCC, stated that accurate data about the percentage of mentally ill parents who have dependent children is not systematically recorded (Green 2002 and Falkov 1997). This lack of data is due unfortunately to the fact that at first point of contact with mental health professionals, many recipients of mental health services are not identified as parents (Blanch et al 1994). Thus, information as to the scale of the problem is largely based on estimates. Within this context Gopfert et al (1996) estimates that one half of all mentally ill adults are parents living with dependent children.

The link between mental illness in parents and a range of adverse outcomes for their children is well established (Royal College of Psychiatrists 2002). A survey by the Office for National Statistics (Meltzer et al 2000a) demonstrated that children with parents who screened positive on the General Health Questionnaire (GHC-12) were three times more likely to have a mental disorder than those with whose parents had sub-threshold scores, 18% compared to 6%. The proportion of children rose steadily with increases in parental GHQ score and the likelihood of children having more than one disorder.

6.7 Deprivation and employment

Many studies have shown that unemployed adults fare worse than employed people on several measures of psychological functioning (Meltzer et al 1995) and similarly the working status of the family seems to be a major factor in understanding the differences in prevalence rates of mental disorders among children and adolescents. In the ONS survey of children and adolescents (Meltzer et al 2000a) children from non-working families were twice as likely than those with at least one working member of the family to have a mental disorder (19.7%



According to 2001 Neighbourhood Statistics, 6.5% of all households in England and Wales were headed by a lone parent with dependent children and 21.9% of households with dependent children were headed by a lone parent. The lone parent rate in North Somerset is lower than this at 5.0% of all households and 17.9% of all households with dependent children.

Appendix 4 indicates the number of households headed by a lone parent with dependent children by ward. The wards with the highest percentage of households with dependent children headed by a lone parent compared with all households with dependent children are:

- WsM Central (37.5%)
- WsM South (35.5%)
- WsM South Worle (24.9%)
- WsM East (24.3%)
- WsM West (21.8%)
- WsM North Worle (17.5%)

Another factor that seemed to have an impact was number of children in the family, with families with four and five children had prevalence rates of 13% and 18% respectively compared to 8% for two-children families.

Pupils with Statements of SEN					
Year	1999	2000	2001*	2002	2003
Number in North Somerset	910	910	N/k	920	880
% pupils in North Somerset	3.2%	3.2%	N/k	3.2%	3.0%
% pupils in S West	3.2%	3.2%	3.3%	3.1%	3.0%
% pupils in England	3.0%	3.0%	3.1%	3.0%	3.0%

**figures for 2001 are estimates and are known to be incomplete at LEA level*

The number of pupils with special educational needs varies greatly with the type of school as can be seen in the table below.

Pupils in maintained schools with SEN in January 2003								
Type of school	Primary		Secondary		Special		PRU	
	With statement	Without statement	With statement	Without statement	With statement	Without statement	With statement	Without statement
Number in North Somerset*	260	2,180	350	1,450	25.2%	0	16	19
% pupils in North Somerset	1.8%	14.6%	2.8%	11.4%	100	0	45.7%	54.3%
% pupils in S West	1.8%	15.5%	2.5%	11.4%	96.4%	3.6%	19.8%	80.2%
% pupils in England	1.6%	15.9%	2.4%	13.0%	97.8%	2.2%	16.8%	83.2%

** In 2003 there were 920 pupils with statements of SEN*

A breakdown of the numbers of pupils by SEN status and year and gender in North Somerset in 2004 is shown below, where S is a full statement of SEN. The level of pupils with SEN by school is shown in appendix 6.

	Total	with statements		without statements		A*-C	A*-G	passes	GCSE Value Added
LEA Average						54.8%	90.5%	4.2%	99.7
England Average						52.9%	88.8%	5.2%	
Backwell School	255	10	3.9%	7	2.7%	66%	97%	1%	101.7
Broadoak Community School	134	10	7.5%	28	20.9%	31%	83%	7%	96.2
Churchill Community School	255	4	1.6%	25	9.8%	67%	98%	1%	101.2
Clevedon Community School	209	4	1.9%	18	8.6%	58%	94%	3%	100.8
Gordano School	228	6	2.6%	13	5.7%	68%	96%	1%	100.3
Nailsea School	226	7	3.1%	43	19.0%	64%	92%	3%	100.7
Priory Community School	197	11	5.6%	4	2.0%	58%	91%	3%	98.4
Sidcot School	46	1	2.2%	7	15.2%	72%	80%	17%	100.8
St Katherine's School	171	7	4.1%	9	5.3%	53%	95%	2%	99.8
Worle School	236	9	3.8%	32	13.6%	52%	92%	2%	97.6
Wyvern Community School	177	13	7.3%	23	13.0%	22%	71%	15%	96.7
Special Schools									
Baytree School	6					NE	NE	NE	NE
Ravenswood School *	13					0%	31%	54%	104.3
Westhaven School	12					0%	25%	17%	108.0

Adapted from Secondary Schools (GCSE/GNVQ) Performance Tables 2003

	Number of Eligible Pupils					% Achieving Level 5 or Above						KS2-KS3 Value Added
	Total	SEN with statements		SEN without statements		English		Maths		Science		
		N	%	N	%	L5+	A/D	L5+	A/D	L5+	A/D	
LEA Average						75%		75%		75%		100.2
England Average						69%		71%		68%		
Backwell School	252	4	1.6%	20	7.9%	79%	13%	85%	4%	84%	3%	100.8
Broadoak Community School	154	5	3.2%	35	22.7%	62%	8%	58%	7%	61%	5%	98.3
Churchill Community School	288	4	1.4%	39	13.5%	82%	5%	84%	3%	85%	3%	100.8
Clevedon Community School	223	2	0.9%	18	8.1%	75%	4%	80%	4%	78%	4%	100.2
Gordano School	262	4	1.5%	8	3.1%	82%	2%	80%	3%	84%	2%	101.4
Nailsea School	238	3	1.3%	52	21.8%	69%	2%	84%	1%	80%	2%	99.7
Priory Community School	217	10	4.6%	25	11.5%	77%	4%	71%	3%	72%	3%	100.2
St Katherine's School	178	10	5.6%	49	27.5%	77%	7%	78%	3%	74%	4%	100.6
Worle School	297	9	3.0%	21	7.1%	78%	5%	74%	5%	76%	4%	99.9
Wyvern Community School	192	8	4.2%	22	11.5%	68%	8%	58%	9%	54%	6%	99.4
Special Schools												
Baytree School	7					0%	0%	0%	0%	0%	0%	100%
Ravenswood School *	16					0%	100	0%	100	0%	100	NA
Westhaven School	12					0%	0%	8%	0%	8%	8%	83%

Adapted from Secondary Schools (Key Stage 3) Performance Tables 2003

The secondary schools with the lowest educational attainment are Wyvern and Broadoak schools.

Most of the primary schools in North Somerset performed better than the average for England in key stage 2 test results for 2003 and the average rates overall for North Somerset are slightly higher than the national average as shown in the table below.

Primary schools – key stage 2 - % achieving level 4 or above		
	North Somerset	England

	2003	2002	2001	2003	2002	2001
English	76.5%	78.4	77.6	75%	75%	75%
Maths	74.1%	74.8	76.3	73%	73%	71%
Science	89.3%	89.6	90.7	87%	86%	87%
DfES Performance Tables						

The percentage of pupils achieving level 4 or above in key stage 2 tests in individual primary or junior schools is shown in appendix 9. Primary or junior schools with the lowest educational attainment in all subjects at key stage 2 tests are:

- Oldmixon Primary
- St Barnabas C of E
- St Katharine's C of E
- Becket Primary
- Walliscote Primary
- Court de Wyck C of E
- Bournville Junior
- Kingshill C of E
- Milton Junior
- Locking Primary
- Dundry C of E

Children's performance and attendance at school is affected by the social and economic environment from which they are drawn, and the schools with most difficulties are serving children from the most disadvantaged areas of the borough. This has implications for the range of education and other activities needed at these schools, particularly those to meet the needs of families who are experiencing temporary crises or who are extremely vulnerable.

8 BIBLIOGRAPHY

- Audit Commission (1999). *Children in Mind: Child and adolescent mental health services*. The Stationery Office.
- Blanch et al (1994). *Parents with severe mental illness and their children*. Journal of Mental Health Administration, 21(4).
- Emerson E (2002). *Self-reported strengths and difficulties of children and adolescents with and without developmental disabilities*. Lancaster University.
- Falcoy A (1997). *Parental psychiatric disorder and child maltreatment*. National Children's Bureau.
- Fonagy P et al (2000). *A review of the outcomes of all treatments of psychiatric disorder in childhood*. Department of Health.
- The Foundation for People with Learning Disabilities (2002). *Count Us In*. The Mental Health Foundation.
- Gopfert M et al (1996). *Parental Psychiatric Disorder: Distressed parents and their families*. Cambridge University Press.
- Green R (2002). *Mentally Ill Parents and Children's Welfare*. NSPCC Information Briefings.
- Hagell A (2002). *Bright Futures: The Mental Health of Young Offenders*. The Mental Health Foundation.
- Index of Multiple Deprivation (2000). Department of the Environment, Transport and the Regions.
- Kurtz Z (1996). *Treating children well*. The Mental Health Foundation.
- Maughan B, Brock A, and Ladva G (2004). *The health of children and young people – chapter 12*. Office for National Statistics.
- Meltzer H, Gill B, Petticrew M and Hinds K (1995). *OPCS surveys of psychiatric morbidity in Great Britain*. The Stationery Office.
- Meltzer H, Gatward R, Goodman R and Ford T (2000a). *Mental health of children and adolescents in Great Britain*. Office for National Statistics.
- Meltzer H, Singleton N, Bumpstead R, O'Brien M and Lee A (2000b). *Psychiatric morbidity among adults living in private households*. Office for National Statistics.
- Meltzer H, Gatward R, Corbin T Goodman R and Ford T (2003a). *Persistence, onset, risk factors and outcomes of childhood mental disorders*. Office for National Statistics.
- Meltzer H, Gatward R, Corbin T, Goodman R and Ford T (2003b). *The mental health of young people looked after by local authorities in England*. Office for National Statistics.
- NHS Health Advisory Service (1995). *Together We Stand: The commissioning role and management of child and adolescent mental health services*. HMSO
- Pithouse A (2003) *A National Strategy for Child and Adolescent Mental Health Services in Wales: New Challenges and New Thinking?* Research, Policy and Planning.
- Richardson J (2002). *Bright Futures: The Mental Health Needs of Looked After Children*. The Mental Health Foundation.
- Social Trends 32. *Families with dependent children headed by lone parents*. Office for National Statistics.
- Stephens J (2002). *Bright Futures: The Mental Health Needs of Homeless Young People*. The Mental Health Foundation.

List of Appendices but likely to include:

Appendix 1 Children's population by ward

Appendix 2 Households with dependent children (WDC) with no adult in employment

Appendix 3 Dependent children by housing tenure

Appendix 4 Lone parent households WDC

Appendix 5 Child vulnerability factors by ward

Appendix 6 Special educational needs in North Somerset

Appendix 7 Free school meals and absences

Appendix 8 Secondary schools GCSE/GNVQ results 2004

Appendix 9 % pupils achieving level 4+ in KS2

Children's and young people's population by ward

Ward Name	All people	People aged 0 - 4	People aged 5 - 7	People aged 8 - 9	People aged 10 - 14	People aged 15	People aged 16 - 17	People aged 18 - 19	0-19 Population	Percentage 0-19 Pop
Backwell	5455	249	176	138	402	69	123	105	1262	23%
Banwell and Winscombe	8691	386	274	217	576	122	252	179	2006	23%
Blagdon and Churchill	3890	188	146	114	276	50	85	74	933	24%
Clevedon Central	3076	181	104	81	219	41	68	60	754	25%
Clevedon East	3442	203	138	97	228	40	88	60	854	25%
Clevedon North	2547	84	46	27	62	18	27	39	303	12%
Clevedon South	3294	228	121	82	232	43	81	78	865	26%
Clevedon Walton	2837	100	75	57	136	25	41	40	474	17%
Clevedon West	3306	209	128	85	190	33	104	75	824	25%
Clevedon Yeo	3455	258	190	97	309	43	112	85	1094	32%
Congresbury	3447	159	112	98	241	59	94	81	844	24%
Easton-in-Gordano	2881	107	61	57	146	22	62	88	543	19%
Gordano	2603	113	69	47	147	33	59	55	523	20%
Hutton and Locking	5839	307	200	136	323	67	119	92	1244	21%
Kewstoke	3248	202	122	87	217	34	85	70	817	25%
Nailsea East	6963	352	252	189	589	120	233	171	1906	27%
Nailsea North and West	9583	445	316	211	634	139	268	213	2226	23%
Pill	3433	209	127	82	209	30	65	62	784	23%
Portishead Central	1518	103	51	32	89	17	32	25	349	23%
Portishead Coast	2808	119	63	45	139	29	60	56	511	18%
Portishead East	3326	258	122	69	188	40	76	68	821	25%
Portishead Redcliffe Bay	2975	137	102	77	166	26	41	41	590	20%
Portishead South and Weston	3129	187	107	85	197	45	72	72	765	24%
Portishead West	3374	212	150	115	267	42	94	69	949	28%
Weston-super-Mare Central	5986	279	149	98	236	46	111	128	1047	17%
Weston-super-Mare Clarence and Uphill	8988	389	231	148	401	87	208	170	1634	18%
Weston-super-Mare East	9570	687	352	203	543	106	213	174	2278	24%
Weston-super-Mare Milton and Worle	9396	449	284	215	542	103	236	179	2008	21%
Weston-super-Mare North Worle	9933	786	447	294	780	148	263	230	2948	30%
Weston-super-Mare South	10416	771	520	319	891	157	309	258	3225	31%
Weston-super-Mare South Worle	9081	629	405	244	614	110	215	192	2409	27%
Weston-super-Mare West	8388	310	145	112	267	73	115	150	1172	14%
Winford	2826	125	98	76	200	43	67	61	670	24%
Wraxall and Long Ashton	6556	340	214	157	400	79	153	123	1466	22%
Wrington	3128	175	114	70	223	36	71	51	740	24%
Yatton	9176	532	375	273	644	113	247	172	2356	26%
NSC	188564	10468	6586	4534	11923	2288	4549	3846	44194	23%

Adapted from 2001 Census Table KS02 Age Structure

Household by tenure by ward (not available separately for households with dependent children)

Ward Name	All households	Owned	Owned with loan	Shared ownership	Rented from: Council	Rented from: Social Landlord	Rented from: Private landlord	Rented from: Other	Total of Rented	% rented of all households
Backwell	2,189	973	908	3	122	11	114	58	305	14%
Banwell and Winscombe	3,675	1,588	1,452	26	206	81	208	114	609	17%
Blagdon and Churchill	1,520	564	623	3	87	22	140	81	330	22%
Clevedon Central	1,308	345	541	9	162	93	121	37	413	32%
Clevedon East	1,437	462	659	3	128	31	103	51	313	22%
Clevedon North	1,221	459	398	10	3	97	206	48	354	29%
Clevedon South	1,421	367	812	22	45	20	126	29	220	15%
Clevedon Walton	1,134	604	444	-	3	14	48	21	86	8%
Clevedon West	1,396	472	731	14	77	5	75	22	179	13%
Clevedon Yeo	1,354	322	800	26	82	6	92	26	206	15%
Congresbury	1,368	531	591	4	109	32	51	50	242	18%
Easton-in-Gordano	1,192	615	429	-	7	13	81	47	148	12%
Gordano	1,079	486	454	4	45	-	58	32	135	13%
Hutton and Locking	2,518	1,159	985	10	105	16	110	133	364	14%
Kewstoke	1,254	374	703	4	44	3	86	40	173	14%
Nailsea East	2,663	867	1,568	13	64	19	100	32	215	8%
Nailsea North and West	4,094	1,580	1,833	15	315	84	147	120	666	16%
Pill	1,459	413	605	7	282	40	63	49	434	30%
Portishead Central	694	263	259	16	49	22	54	31	156	22%
Portishead Coast	1,194	584	479	-	25	37	48	21	131	11%
Portishead East	1,394	397	824	8	76	4	59	26	165	12%
Portishead Redcliffe Bay	1,308	572	616	5	49	3	41	22	115	9%
Portishead South and Weston	1,320	427	594	14	144	48	50	43	285	22%
Portishead West	1,316	437	652	5	133	31	34	24	222	17%
Weston-super-Mare Central	2,983	873	719	24	100	113	1,009	145	1,367	46%
Weston-super-Mare Clarence and Uphill	3,961	1,720	1,441	19	23	121	528	109	781	20%
Weston-super-Mare East	4,265	1,326	1,960	36	313	103	385	142	943	22%
Weston-super-Mare Milton and Worle	4,195	1,896	1,689	29	247	46	185	103	581	14%
Weston-super-Mare North Worle	3,917	890	2,424	65	132	59	278	69	538	14%
Weston-super-Mare South	4,421	686	1,222	24	1,844	133	219	293	2,489	56%
Weston-super-Mare South Worle	3,833	1,172	1,908	56	218	112	266	101	697	18%
Weston-super-Mare West	4,140	1,505	1,349	12	44	109	984	137	1,274	31%
Winford	1,114	526	468	3	41	-	55	21	117	11%
Wraxall and Long Ashton	2,740	1,128	1,119	14	195	41	146	97	479	17%
Wrington	1,284	538	505	19	58	-	115	49	222	17%
Yatton	3,623	1,200	1,826	41	207	105	151	93	556	15%
NSC	79,985	28,321	34,590	566	5,783	1,673	6,536	2,516	16,508	21%
England	20,451,427	5,969,670	7,950,759	133,693	2,702,482	1,238,246	1,798,864	657,713	6,397,305	31%

Adapted from 2001 Census Table KS18 Housing Tenure

Child Vulnerability factors by ward (weighted as equal)

Ward Name	Factor 1 LAC	Factor 2 LLD	Factor 3 Physical illness	Factor 4 Youth Offending (data unreliable)	Factor 5 Homeless	Factor 6 Ill health	Factor 7 Unemployment	Factor 8 Housing Tenure	Factor 9 Lone parent	Overall
Backwell	27.41%	29%	29%		14%	29%	14%	14%	25%	23%
Banwell and Winscombe	16.33%	29%	34%		17%	34%	14%	17%	20%	25%
Blagdon and Churchill	52.63%	37%	28%		22%	28%	8%	22%	15%	26%
Clevedon Central	0.00%	37%	34%		32%	34%	15%	32%	25%	27%
Clevedon East	13.92%	39%	32%		22%	32%	23%	22%	35%	23%
Clevedon North	0.00%	10%	33%		29%	33%	6%	29%	10%	20%
Clevedon South	28.15%	14%	27%		15%	27%	19%	15%	30%	17%
Clevedon Walton	0.00%	11%	30%		8%	30%	3%	8%	5%	14%
Clevedon West	0.00%	17%	30%		13%	30%	8%	13%	20%	20%
Clevedon Yeo	29.54%	27%	25%		15%	25%	22%	15%	35%	24%
Congresbury	14.62%	41%	31%		18%	31%	12%	18%	20%	17%
Easton-in-Gordano	0.00%	10%	25%		12%	25%	3%	12%	5%	13%
Gordano	0.00%	11%	33%		13%	33%	7%	13%	10%	20%
Hutton and Locking	31.77%	32%	38%		14%	38%	10%	14%	15%	23%
Kewstoke	31.92%	35%	29%		14%	29%	12%	14%	15%	19%
Nailsea East	7.51%	29%	25%		8%	25%	8%	8%	20%	21%
Nailsea North and West	29.31%	38%	33%		16%	33%	12%	16%	25%	26%
Pill	0.00%	41%	32%		30%	32%	27%	30%	30%	25%
Portishead Central	0.00%	35%	34%		22%	34%	9%	22%	25%	19%
Portishead Coast	16.72%	13%	30%		11%	30%	4%	11%	10%	17%
Portishead East	14.35%	32%	24%		12%	24%	12%	12%	20%	16%
Portishead Redcliffe Bay	0.00%	15%	30%		9%	30%	4%	9%	10%	21%
Portishead South and Weston	30.30%	36%	33%		22%	33%	18%	22%	30%	27%
Portishead West	30.40%	40%	29%		17%	29%	13%	17%	25%	30%
Weston-super-Mare Central	20.11%	20%	40%		46%	40%	27%	46%	35%	30%
Weston-super-Mare Clarence and Uphill	45.44%	15%	37%		20%	37%	13%	20%	20%	28%
Weston-super-Mare East	23.45%	38%	35%		22%	35%	23%	22%	35%	27%
Weston-super-Mare Milton and Worle	23.84%	31%	39%		14%	39%	13%	14%	20%	25%
Weston-super-Mare North Worle	25.53%	48%	29%		14%	29%	19%	14%	35%	45%
Weston-super-Mare South	108.57%	65%	46%		56%	46%	61%	56%	60%	47%
Weston-super-Mare South Worle	26.09%	55%	34%		18%	34%	28%	18%	40%	29%
Weston-super-Mare West	43.48%	12%	37%		31%	37%	12%	31%	15%	24%
Winford	35.91%	22%	29%		11%	29%	11%	11%	15%	21%
Wraxall and Long Ashton	43.80%	19%	29%		17%	29%	10%	17%	15%	24%
Wrington	62.31%	25%	27%		17%	27%	11%	17%	15%	24%
Yatton	5.52%	54%	30%		15%	30%	12%	15%	25%	25%
NSC	30.01%	36%	33%		21%	33%	17%	21%	25%	29%

Special Needs in Schools

School	Number of pupils on roll	Total with Statements or School Action Plus Categorisation	% of Number on Roll
All Saints, East Clevedon C of E Primary School	117	1	0.9%
Ashcombe Primary School	348	6	1.7%
Backwell C E Junior School	227	6	2.6%
Backwell School	1647	35	2.1%
Barwell Primary School	181	2	1.1%
Baytree School	58	46	79.3%
Becket Primary School	233	6	2.6%
Birdwell Primary School	176	2	1.1%
Blagdon Primary School	99	3	3.0%
Bournville Infant School	125	3	2.4%
Bournville Junior School	190	12	6.3%
Broadoak Community School	763	41	5.4%
Burrington C E Primary School	73	1	1.4%
Castle Batch Primary School	428	29	6.8%
Christ Church C E Primary School	207	6	2.9%
Churchill Primary School	195	3	1.5%
Churchill Community School and Sixth Form Centre	1633	33	2.0%
Clevedon Community School	1282	19	1.5%
Corpus Christi R C Primary School	217	4	1.8%
Court de Wyck Primary School	120	8	6.7%
Crockerne C of E Primary School (Pill)	248	9	3.6%
Dundry C E Primary School	90	1	1.1%
Flax Bourton C E Primary School	70	5	7.1%
Glebe Infant School	99	3	3.0%
Golden Valley Primary School	410	6	1.5%
Gordano School	1657	22	1.3%
Grove Junior School	354	5	1.4%
Hannah More Infant School	211	4	1.9%
Heron's Moor Community Primary School	254	6	2.4%
High Down Infant School	222	2	0.9%
High Down Junior School	327	5	1.5%
Hillside First School	148	2	1.4%
Hutton C E Primary School	207	6	2.9%
Kewstoke Primary School	106	1	0.9%
Kingshill C E Primary School	155	5	3.2%
Locking Primary School	276	3	1.1%
Mary Elton Primary School	408	9	2.2%
Mead Vale Primary School	418	8	1.9%
Mendip Green First School	522	23	4.4%
Milton Infant School	173	6	3.5%
Milton Junior School	233	9	3.9%
Nailsea School	1420	33	2.3%
Northleaze Primary School	179	1	0.6%
Oldmixon Primary School	207	5	2.4%
Portishead Primary School	293	1	0.3%
Priory Community School	1153	57	4.9%
Ravenswood School	110	102	92.7%
Sandford Primary School	148	3	2.0%
St Andrew's Junior School	164	2	1.2%
St Anne's C E Primary School	158	6	3.8%
St Barnabas C E Primary School	96	8	8.3%
St Francis R C Primary School	205	4	2.0%
St John the Evangelist School	279	3	1.1%
St Joseph's R C Primary School	205	5	2.4%

St Katharine's C of E Primary School	79	1	1.3%
St Katherine's School	1018	35	3.4%
St Mark's Primary School	407	5	1.2%
St Martin's C E Junior School	606	18	3.0%
St Mary's C E Primary School	94	1	1.1%
St Nicholas Chantry C E Primary School	316	8	2.5%
St Peter's C E Primary School	352	5	1.4%
Tickenham Primary School	85	1	1.2%
Uphill Primary School	319	1	0.3%
Walliscote Primary School	366	12	3.3%
West Leigh Infant School	123	4	3.3%
Westhaven School	66	61	92.4%
Windwhistle Primary School	365	18	4.9%
Winford C E Primary School	110	1	0.9%
Winscombe Woodborough Primary School	194	7	3.6%
Worle School	1489	72	4.8%
Worlebury St Paul's C of E First School	114	1	0.9%
Wraxall C E Primary School	94	3	3.2%
Wrington C E Primary School	195	3	1.5%
Wyvern Community School	931	57	6.1%
Yatton C of E VC Infant School	241	3	1.2%
Yatton C of E VC Junior School	342	9	2.6%
Yeo Moor Infant School	175	3	1.7%
Yeo Moor Junior School	241	1	0.4%
All Schools	27846	966	3.5%

Free School Meals and Absences

Primary Schools	FSM	Absence (2003/4)
All Saints Primary School	7.0%	4.2%
Ashcombe Primary	24.5%	5.3%
Backwell C of E Junior	3.1%	4.3%
Banwell Primary School	22.9%	6.6%
Becket Primary	22.8%	6.6%
Birdwell Primary	7.2%	5.4%
Blagdon Primary	5.2%	5.5%
Bournville Infants School	53.7%	8.4%
Bournville Junior School	43.0%	7.0%
Burrington CE Primary School	1.4%	3.4%
Castle Batch Primary	7.8%	5.8%
Christ Church V.C. Primary	20.2%	6.1%
Churchill CE VC Primary	2.5%	5.3%
Corpus Christi R.C.V.A.	15.8%	5.3%
Court-De-Wyck V.C Primary	12.8%	6.8%
Crockerne CE Primary (Pill)	13.8%	6.0%
Dundry CEVC Primary School	6.5%	4.3%
Flax Bourton Primary	2.8%	5.6%
Glebe Infant School	15.2%	7.1%
Golden Valley Primary School	1.7%	5.1%
Grove Junior School	5.6%	4.1%
Hannah More Infants School	6.6%	4.4%
Hérons' Moor Primary School	9.4%	6.9%
High Down Infants	3.2%	4.9%
High Down Junior School	6.7%	4.2%
Hillside First School	11.3%	6.3%
Hutton C/E Primary	4.4%	5.5%
Kewstoke Primary	2.9%	2.5%
Kingshill Primary School	13.2%	6.7%
Locking County Primary School	19.8%	6.4%
Mary Elton Primary	8.3%	5.4%
Mead Vale Primary School	19.2%	5.3%
Mendip Green First School	16.2%	5.7%
Milton Infants' School	11.0%	7.9%
Milton Junior School	15.5%	6.7%
Northleaze V.C. Primary School	2.8%	3.2%
Oldmixon Primary	33.3%	6.1%
Portishead Primary School	3.0%	4.6%
Sandford Primary School	6.0%	6.6%
St Andrew's C.E. Junior School	8.4%	4.5%
St Anne's Primary	11.8%	3.8%
St Barnabas C of E Primary	9.7%	7.7%
St Francis' Catholic Primary	2.9%	4.0%
St John the Evangelist Prim.	5.0%	5.0%
St Joseph's RC Primary	4.4%	4.0%
St Katharine's C of E Primary	9.2%	5.8%
St Mark's School, Worle	7.1%	5.5%
St Martin's CE Junior School	10.0%	6.2%
St Mary's C E Primary	5.1%	5.6%
St Nicholas' Chantry Primary	9.0%	5.4%
St Peter's C of E Primary	5.3%	4.9%
Tickenham Church of England	0.0%	4.7%
Uphill Primary School	6.2%	6.9%
Walliscote Primary	29.9%	6.8%
West Leigh Infants	2.5%	3.5%
Windwhistle School	38.1%	7.8%
Winford Primary School	2.7%	5.0%
Winscombe Woodborough Primary	4.1%	6.2%
Worlebury St Pauls CEVA School	2.6%	5.2%
Wraxall CEVA Primary School	9.7%	3.9%
Wrington CE Primary	1.6%	5.9%
Yatton Infant School	3.3%	4.6%
Yatton Junior School	7.4%	4.0%
Yeo Moor Infant School	10.9%	5.2%
Yeo Moor Junior School	12.3%	5.4%
Total	11.5%	5.5%

Secondary & Special Schools	FSM	Absence (2003/4)
Backwell School	4%	12.7%
Broadoak Community School	14%	9.8%
Churchill Community School	6%	8.4%
Clevedon Community School	5%	10.1%
Gordano School	5%	7.0%
Nailsea School	3%	8.0%
Priory Community School	8%	8.9%
St Katherine's School	11%	5.8%
Worle School	10%	7.8%
Wyvern Community School	22%	6.1%
Total	8%	8.2%

Appendix 8 Secondary schools GCSE/GNVQ results 2004

School and College Achievement and Attainment Tables 2004

Cohort Information and Results for students aged 15 at start of the school year: North Somerset

	<u>Cohort Information</u>					<u>Results for students aged 15</u>			
	Number of students aged 15	with SEN, with statements		with SEN, without statements		% in age group obtaining the equivalent of :		% in age group with at least an entry level qualif.	Average total point score per 15 year old
		Number	%	Number	%	Level 2 (5 or more grades A*-C)	Level 1 (5 or more grades A*-G)		
LEA Average			4.3%		9.4%	55.0%	89.9%	96.7%	347.8
England Average			4.0%		11.9%	53.7%	88.8%	95.9%	340.4
Backwell School	252	7	2.8%	3	1.2%	73%	98%	99%	388.2
Broadoak Community School	167	4	2.4%	36	21.6%	41%	82%	93%	287.8
Churchill Community School and...	259	8	3.1%	35	13.5%	58%	97%	99%	380.9
Clevedon Community School	219	10	4.6%	14	6.4%	54%	89%	96%	355.2
Gordano School	265	4	1.5%	15	5.7%	70%	95%	99%	374.6
Nailsea School	243	7	2.9%	27	11.1%	67%	95%	98%	398.1
Priory Community School	211	9	4.3%		0.0%	42%	87%	96%	311.2
Rathbone Key Stage 4	12	5	41.7%	7	58.3%	-	-	-	-
Sidcot School	54		0.0%	1	1.9%	74%	80%	89%	329.1
St Katherine's School	177	5	2.8%	21	11.9%	58%	86%	95%	364.5
Worle Community School	293	6	2.0%	40	13.7%	48%	93%	98%	340.3
Wyvern Community School	184	12	6.5%	22	12.0%	35%	78%	95%	268.3
Special Schools									
Baytree School	2					NE	NE	NE	NE
Ravenswood School	10					0%	0%	30%	13.8
Westhaven School	14					0%	43%	100%	124.6

Primary Schools with Level 4+

ACHIEVEMENT AND ATTAINMENT TABLES 2004: KEY STAGE 2 TEST RESULTS

Key Stage 2 Test Results: North Somerset

Eligible pupils achieving Level 4 or above, and percentage absent or working at the level of the test but unable to access it

	Pupils eligible for Key Stage 2 assessment					English			Mathematics			Science			Average point score
	total	With SEN				L4+	L5	A/T	L4+	L5	A/T	L4+	L5	A/T	
		with statements	without statements												
LEA Average			3.3%		17.2%	79%	30%		77%	32%		89%	47%		27.9
England Average			3.4%		18.3%	78%	27%		74%	31%		86%	43%		27.5
All Saints East Clevedon Churc...	16	0	0.0%	2	12.5%	100%	44%	0%	88%	50%	0%	94%	50%	0%	29.5
Ashcombe Primary School	45	1	2.2%	6	13.3%	73%	20%	0%	80%	31%	0%	89%	49%	0%	27.6
Backwell Church of England Jun...	68	3	4.4%	18	26.5%	88%	63%	3%	88%	57%	3%	97%	74%	0%	30.4
Banwell Primary School	23	1	4.3%	5	21.7%	74%	22%	0%	70%	30%	0%	100%	39%	0%	27.4
Becket Primary School	36	1	2.8%	10	27.8%	42%	6%	11%	47%	17%	11%	67%	19%	8%	25.0
Birdwell Primary School	14	0	0.0%	3	21.4%	86%	43%	0%	79%	57%	0%	86%	64%	0%	29.1
Blagdon Primary School	14	1	7.1%	2	14.3%	93%	36%	0%	79%	57%	0%	93%	64%	0%	29.0
Bournville Junior School	48	4	8.3%	8	16.7%	50%	2%	2%	42%	6%	2%	65%	13%	2%	24.1
Burrington Church of England V...	7	≤	≤	≤	≤	≤	≤	≤	≤	≤	≤	≤	≤	≤	≤
Castle Batch Community Primary...	60	2	3.3%	10	16.7%	83%	15%	2%	88%	37%	2%	93%	55%	2%	28.4
Christ Church Church of Englan...	29	2	6.9%	10	34.5%	76%	17%	0%	72%	28%	0%	97%	52%	0%	27.7
Churchill Church of England Pr...	29	0	0.0%	6	20.7%	93%	52%	0%	97%	52%	0%	93%	59%	7%	30.0
Corpus Christi Catholic Primar...	30	1	3.3%	6	20.0%	80%	20%	0%	80%	33%	0%	87%	33%	0%	27.5
Court-de-Wyck Church of Englan...	27	3	11.1%	12	44.4%	48%	19%	0%	52%	22%	0%	70%	33%	0%	24.3
Crockerne Church of England Pr...	51	3	5.9%	10	19.6%	59%	8%	2%	59%	24%	2%	71%	22%	6%	25.5
Dundry Church of England Prima...	15	0	0.0%	0	0.0%	47%	0%	0%	33%	0%	0%	80%	7%	0%	24.2
Flax Bourton Church of England...	10	≤	≤	≤	≤	≤	≤	≤	≤	≤	≤	≤	≤	≤	≤
Golden Valley Primary School	59	2	3.4%	11	18.6%	86%	34%	0%	95%	46%	0%	95%	71%	0%	29.5
Grove Junior School	102	3	2.9%	8	7.8%	83%	26%	1%	82%	36%	2%	95%	47%	0%	28.2
Herons Moor Community Primary ...	13	0	0.0%	6	46.2%	46%	8%	0%	77%	23%	0%	77%	15%	0%	25.2
High Down Junior School	95	0	0.0%	24	25.3%	94%	32%	0%	85%	37%	0%	92%	48%	0%	28.7

Hutton Church of England Prima...	25	0	0.0%	4	16.0%	80%	28%	4%	84%	24%	0%	96%	64%	0%	28.4
Kewstoke Primary School	16	0	0.0%	0	0.0%	88%	25%	0%	100%	56%	0%	100%	63%	0%	29.5
Kingshill CofE Primary School	23	1	4.3%	5	21.7%	70%	4%	4%	78%	30%	4%	96%	52%	0%	27.5
Locking Primary School	32	2	6.3%	5	15.6%	59%	9%	3%	59%	22%	0%	75%	16%	0%	25.2
Mary Elton Primary School	56	0	0.0%	8	14.3%	68%	29%	7%	73%	34%	7%	88%	46%	5%	28.0
Mead Vale Community Primary Sc...	54	0	0.0%	7	13.0%	87%	46%	2%	94%	63%	2%	96%	69%	2%	30.2
Milton Junior School	51	0	0.0%	13	25.5%	63%	20%	0%	59%	22%	2%	78%	39%	0%	26.1
Northleaze Church of England P...	17	0	0.0%	1	5.9%	100%	35%	0%	94%	41%	0%	100%	53%	0%	29.5
Oldmixon Primary School	26	0	0.0%	7	26.9%	65%	15%	0%	65%	15%	4%	85%	38%	0%	26.0
Portishead Primary School	31	0	0.0%	8	25.8%	77%	32%	0%	74%	32%	3%	90%	32%	0%	27.7
Sandford Primary School	24	0	0.0%	7	29.2%	75%	17%	0%	67%	8%	0%	96%	29%	0%	26.7
St Andrew's Church of England ...	50	2	4.0%	6	12.0%	80%	22%	8%	70%	20%	4%	90%	56%	0%	27.8
St Anne's Church of England Pr...	27	0	0.0%	6	22.2%	85%	44%	0%	74%	33%	4%	81%	33%	0%	28.0
St Barnabas Church of England ...	20	1	5.0%	4	20.0%	50%	5%	0%	65%	20%	0%	80%	25%	0%	25.8
St Francis Catholic Primary Sc...	33	1	3.0%	1	3.0%	94%	42%	0%	97%	52%	0%	100%	79%	0%	30.3
St John the Evangelist Volunta...	40	1	2.5%	1	2.5%	98%	53%	0%	90%	38%	0%	98%	58%	0%	29.7
St Joseph's Catholic Primary S...	31	0	0.0%	3	9.7%	100%	61%	0%	94%	55%	0%	94%	74%	0%	30.5
St Katharine's Church of Engla...	16	0	0.0%	7	43.8%	88%	25%	0%	100%	25%	0%	100%	69%	0%	29.1
St Mark's Voluntary Aided Ecum...	49	0	0.0%	3	6.1%	86%	27%	4%	80%	35%	2%	92%	51%	8%	28.7
St Martin's Church of England ...	197	3	1.5%	26	13.2%	88%	42%	4%	77%	32%	1%	92%	48%	2%	28.6
St Mary's Church of England Vo...	9	≤	≤	≤	≤	≤	≤	≤	≤	≤	≤	≤	≤	≤	≤
St Nicholas Chantry Church of ...	42	1	2.4%	3	7.1%	88%	50%	2%	88%	29%	5%	90%	33%	0%	28.6
St Peter's Church of England P...	49	0	0.0%	7	14.3%	88%	29%	2%	88%	31%	0%	96%	67%	0%	29.0
Tickenham Church of England Pr...	12	0	0.0%	5	41.7%	92%	25%	0%	83%	17%	0%	100%	58%	0%	28.5
Uphill Primary School	47	0	0.0%	2	4.3%	87%	17%	0%	70%	28%	2%	91%	38%	0%	27.6
Walliscote Primary School	56	1	1.8%	11	19.6%	79%	27%	2%	61%	21%	2%	77%	29%	2%	26.4
Windwhistle Primary School	59	4	6.8%	15	25.4%	85%	29%	0%	61%	14%	0%	83%	41%	0%	26.7

Winford Church of England Prim...	21	3	14.3%	3	14.3%	67%	48%	0%	86%	38%	0%	86%	29%	0%	27.6
Winscombe Woodborough Primary ...	35	2	5.7%	4	11.4%	83%	37%	3%	71%	37%	3%	94%	63%	6%	29.0
Wraxall Church of England Volu...	7	≤	≤	≤	≤	≤	≤	≤	≤	≤	≤	≤	≤	≤	≤
Wrinton Church of England Pri...	28	1	3.6%	1	3.6%	93%	46%	4%	93%	36%	4%	96%	43%	4%	29.4
Yatton Church of England Junio...	84	3	3.6%	12	14.3%	81%	40%	1%	81%	35%	0%	95%	55%	0%	28.6
Yeo Moor Junior School	81	1	1.2%	21	25.9%	79%	30%	1%	75%	32%	1%	90%	49%	0%	28.0
Special Schools															
Baytree School	4					≤	≤	≤	≤	≤	≤	≤	≤	≤	≤
Ravenswood School*	8					≤	≤	≤	≤	≤	≤	≤	≤	≤	≤
Westhaven School	3					≤	≤	≤	≤	≤	≤	≤	≤	≤	≤

< = less than 11 eligible pupils – no requirement to publish results