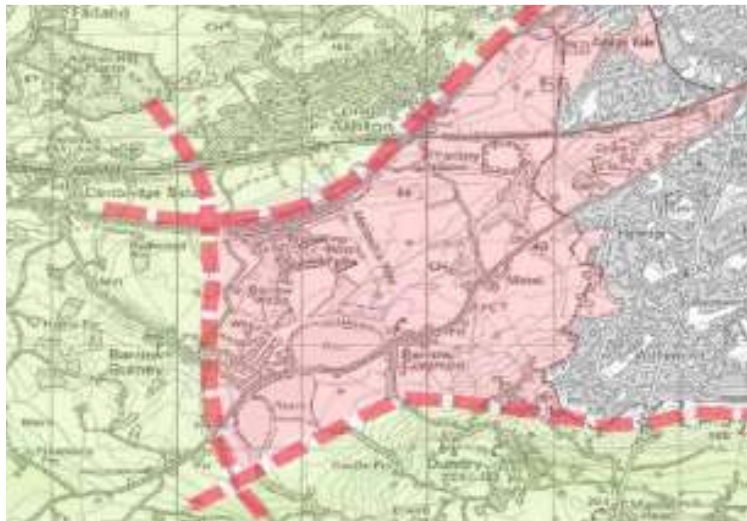




Ashton Park

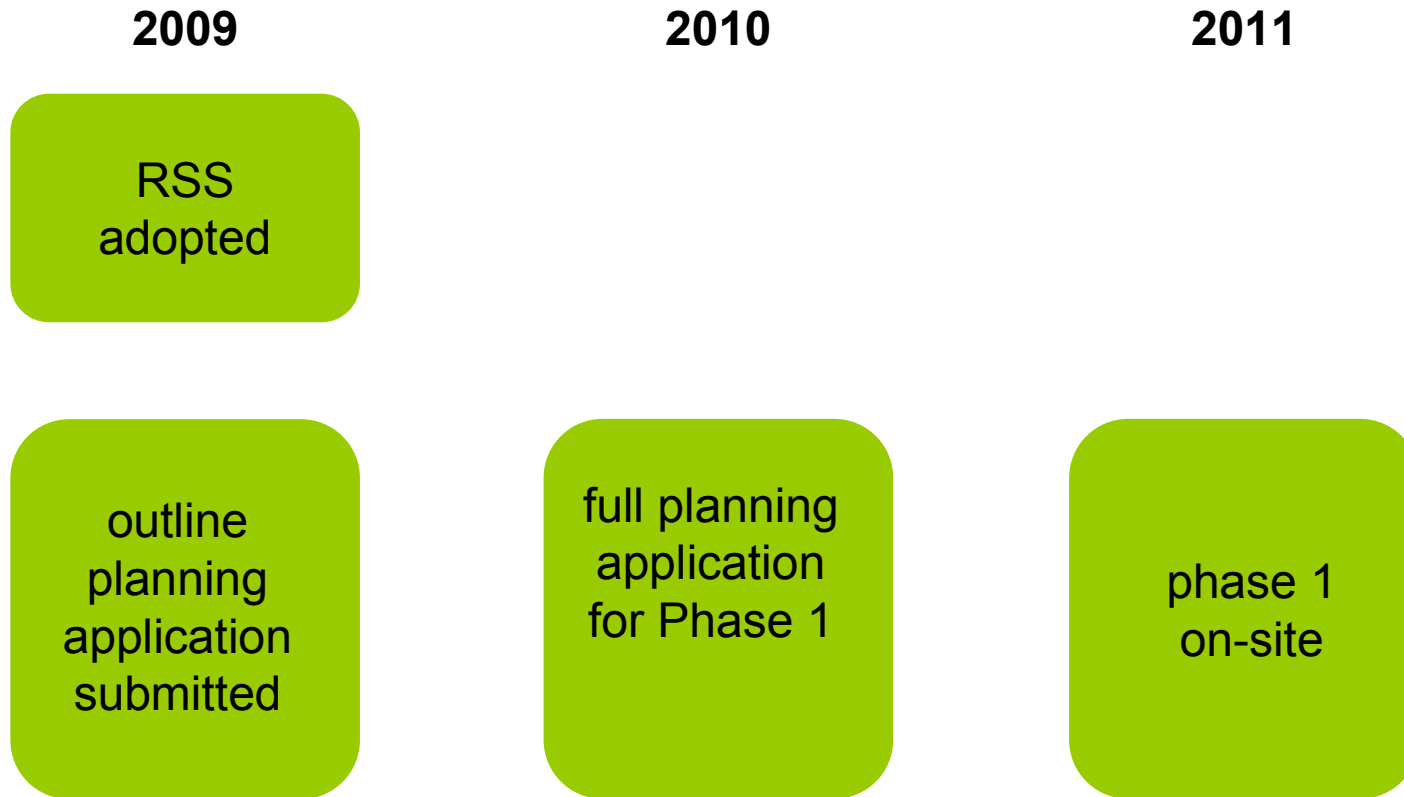
the story so far



- a new part of Bristol
- joined to the city to the south west
- development of green and brown land currently in the green belt
- to provide around 10,500 houses with strategic and community infrastructure
- by 2026



planning and implementation timescales

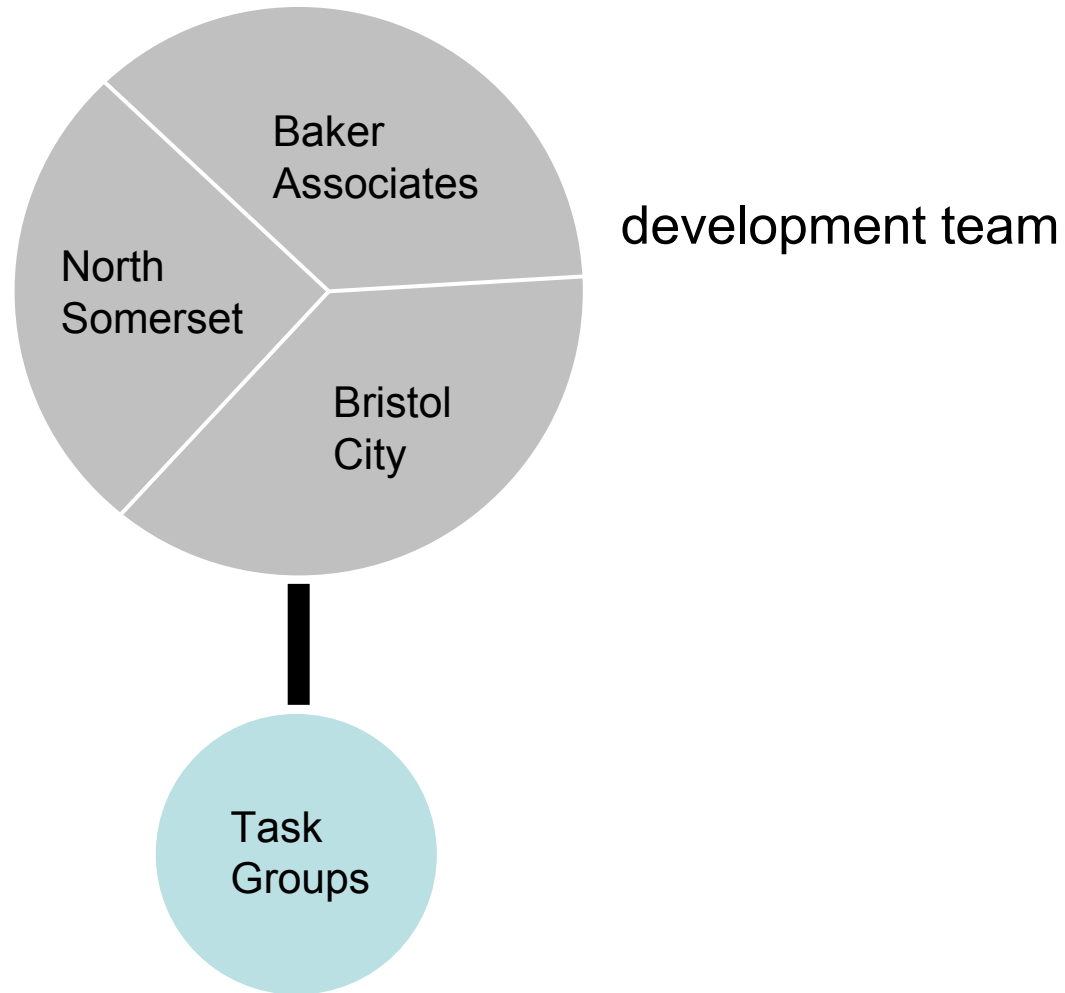


working with stakeholders

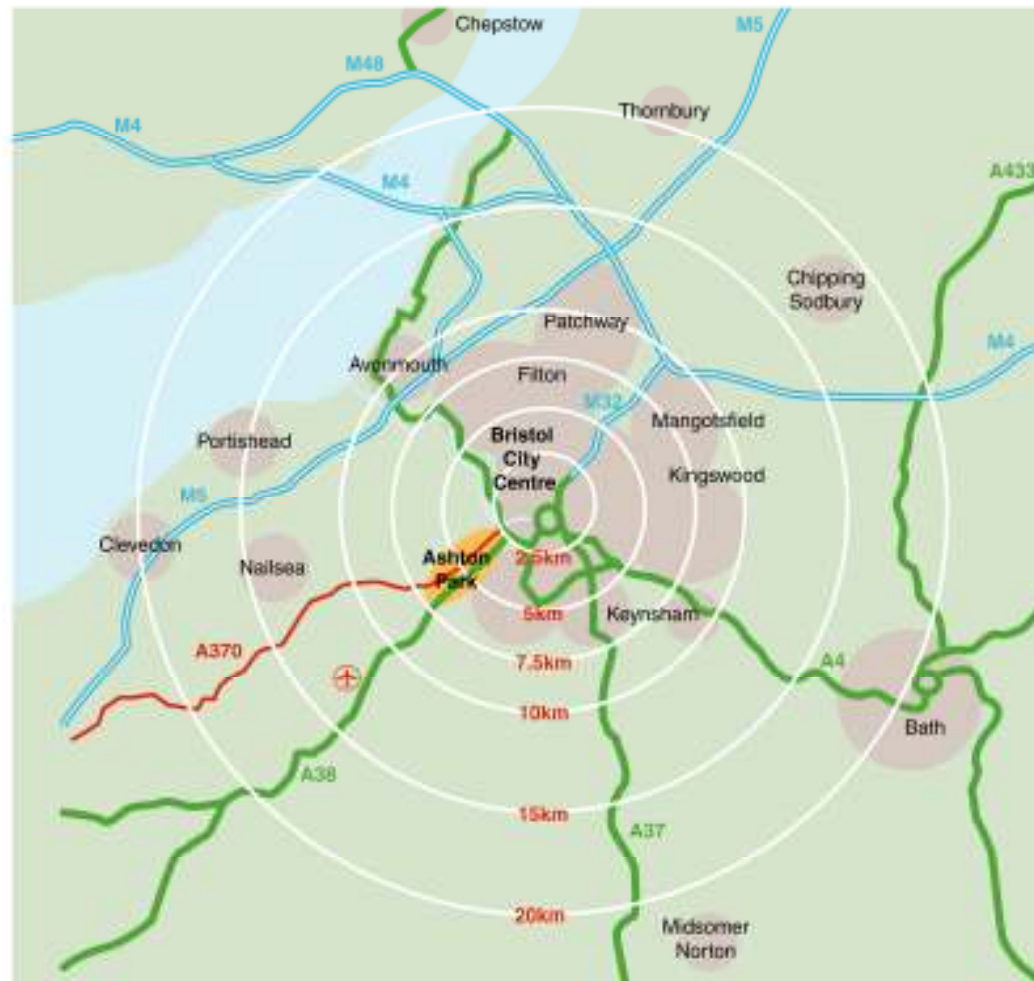


- 'Planning Together' Workshops
- detailed work with statutory bodies and service providers
- employment workshop
- Parish Councils
- nearby developers
- young people through 'Common Purpose'
- programme of public consultation starting in February 2009

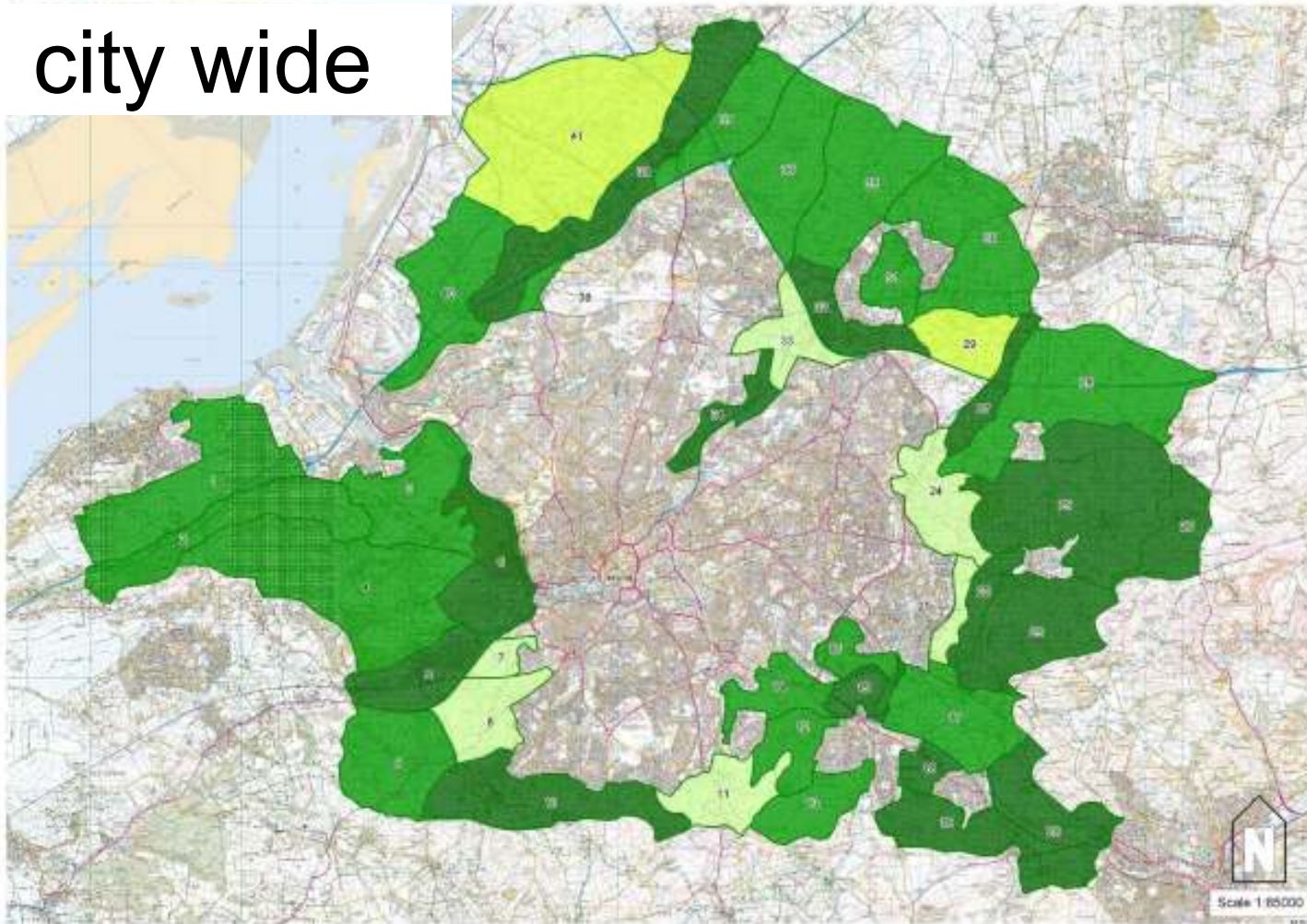
working with the planning authorities



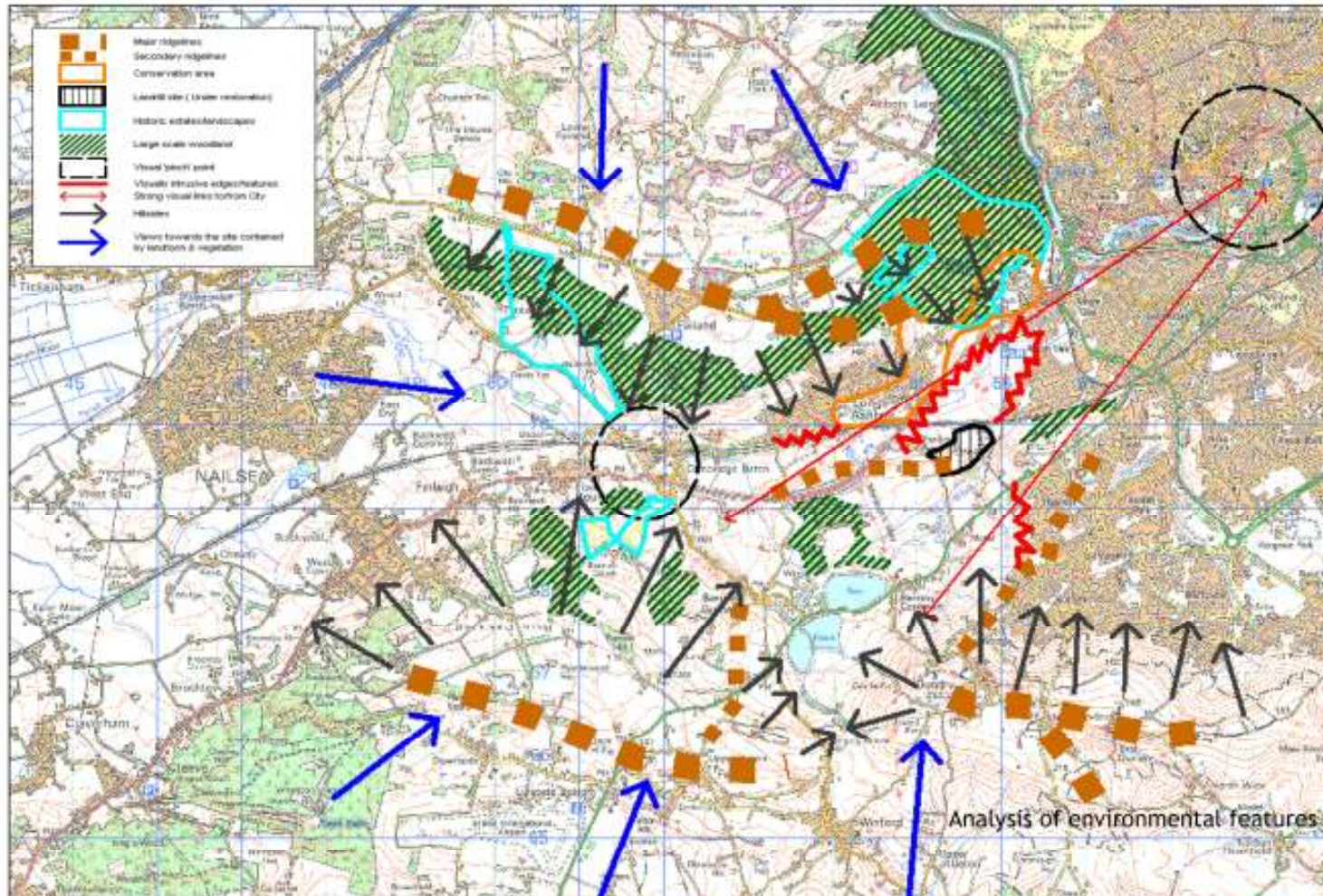
sub region



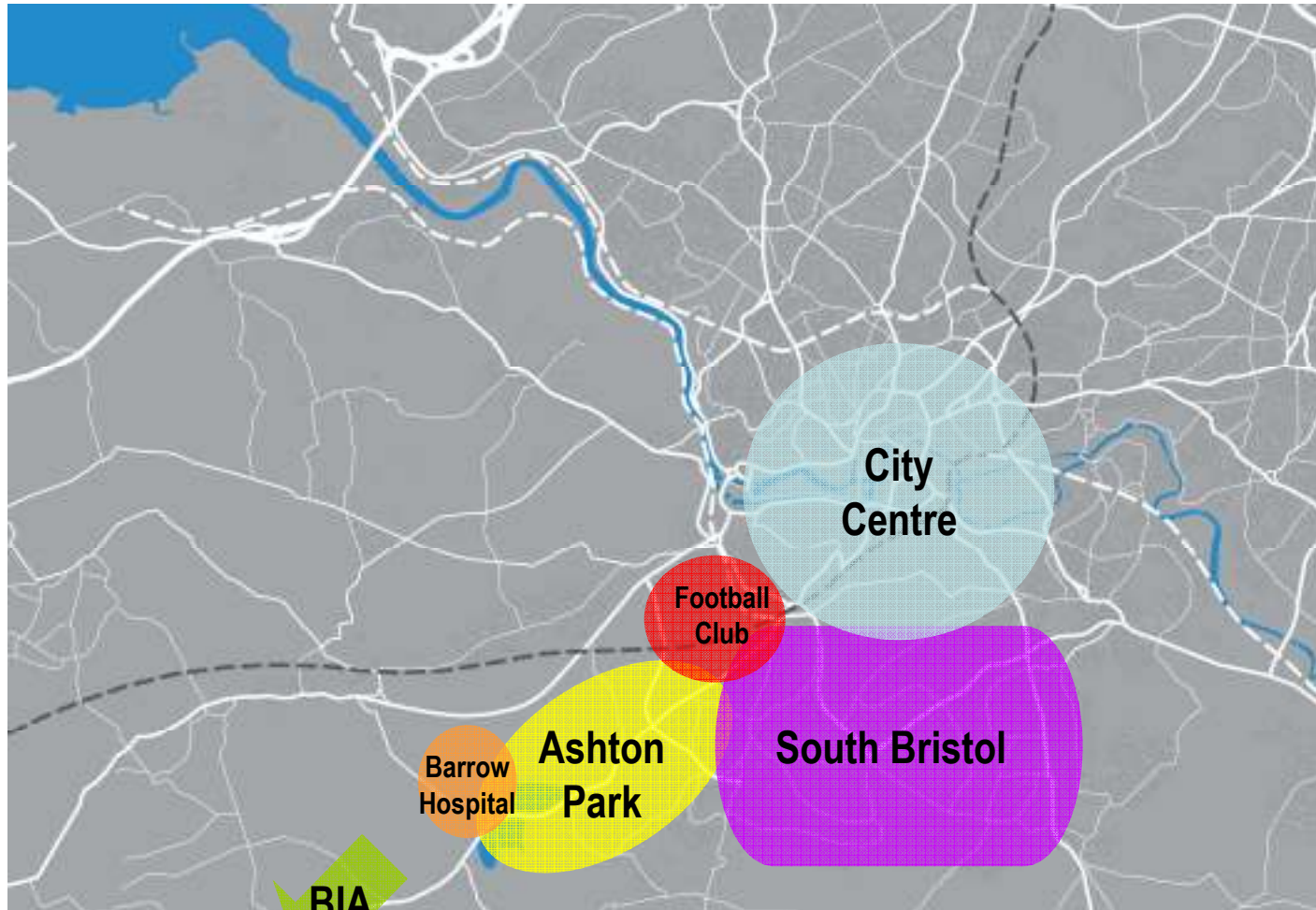
city wide



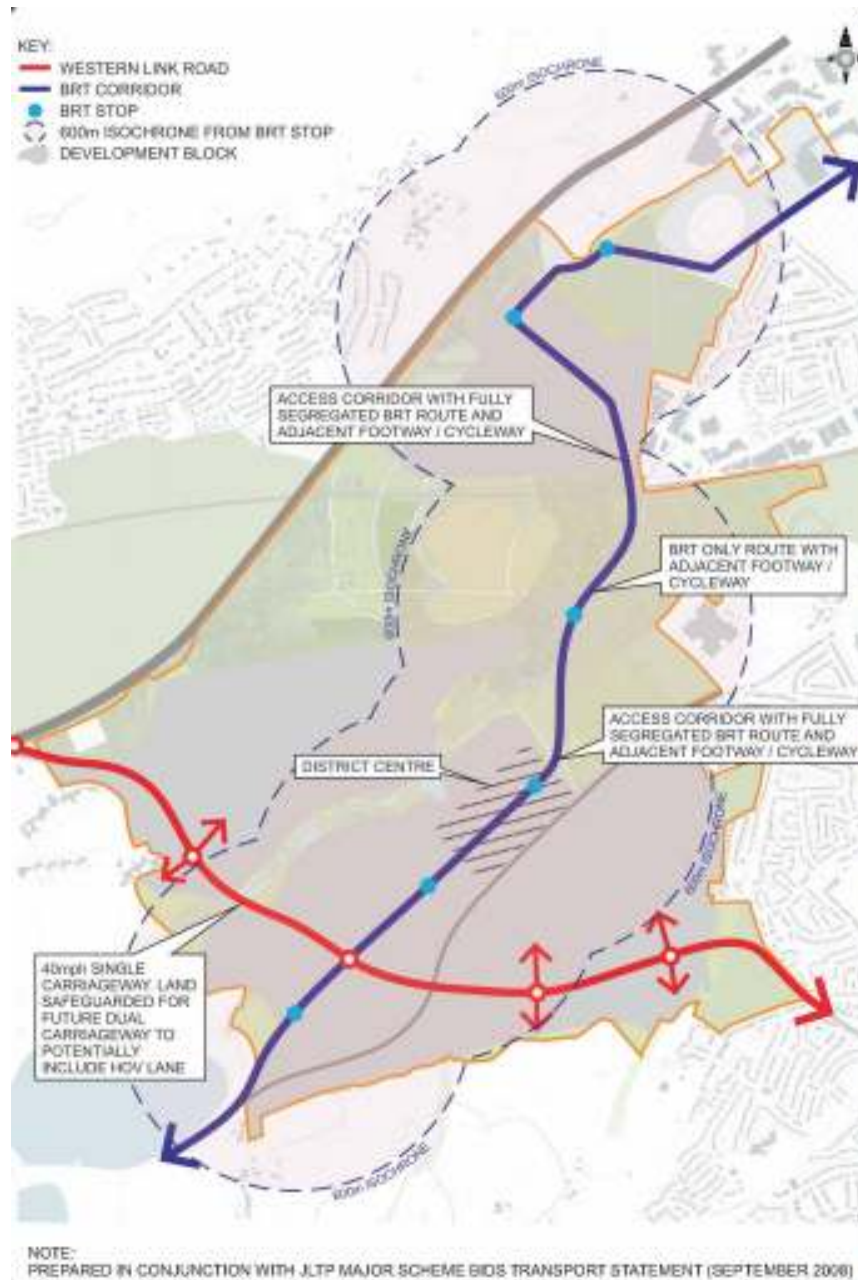
local



fit of Ashton Park with changes in south/south west Bristol



movement



green infrastructure



issues and tensions

- city district – complementarity and connectivity with south Bristol
- housing numbers – RSS urban extension and district figures
- transport – complementarity and connectivity with south Bristol
- employment content – market, planning and economic development

emerging masterplan





Ashton Park

The story so far

