

Major Transport Schemes Update

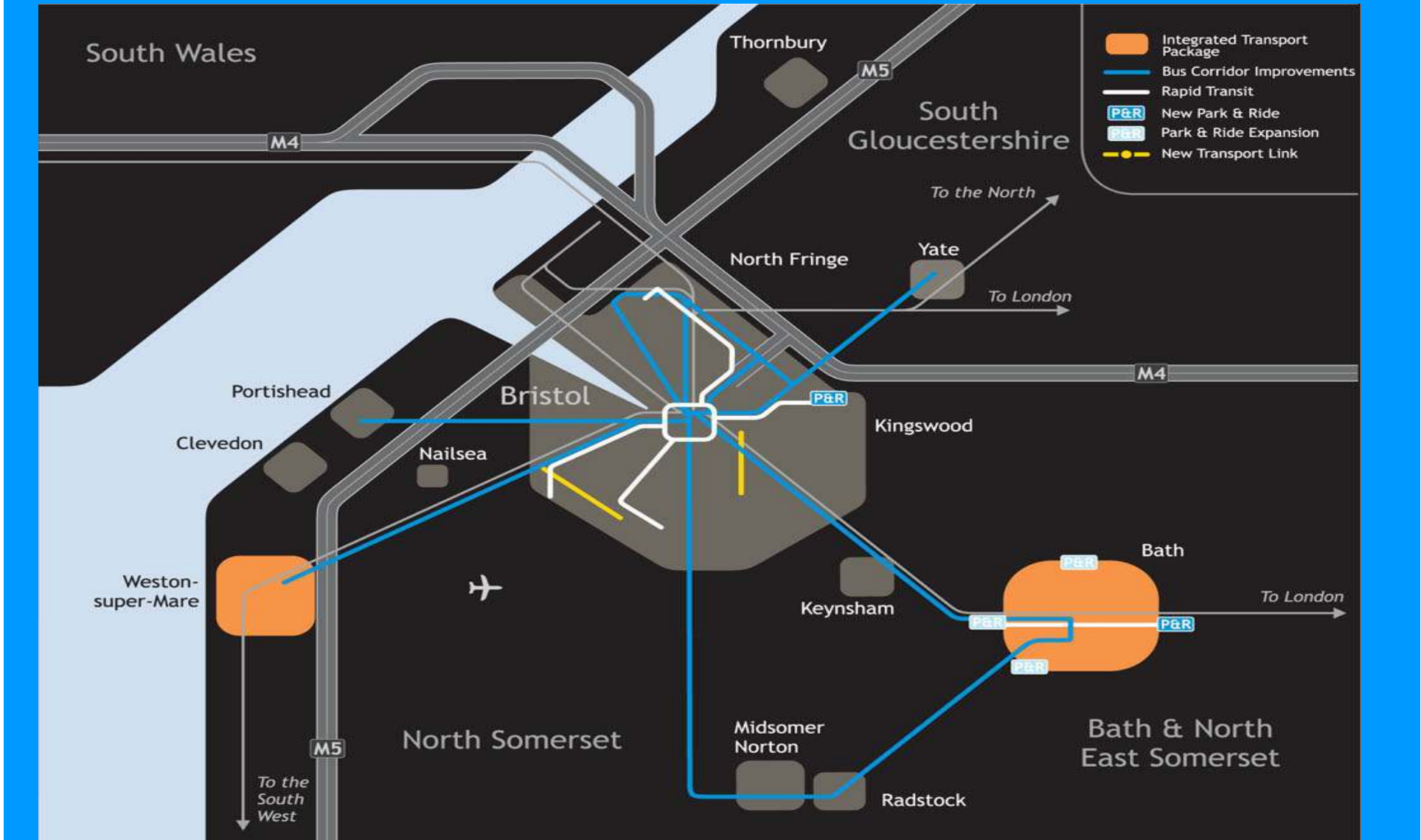
*Planning Together
Workshop*

26th November 2008

**Bath & North East
Somerset Council**



Major Transport Projects



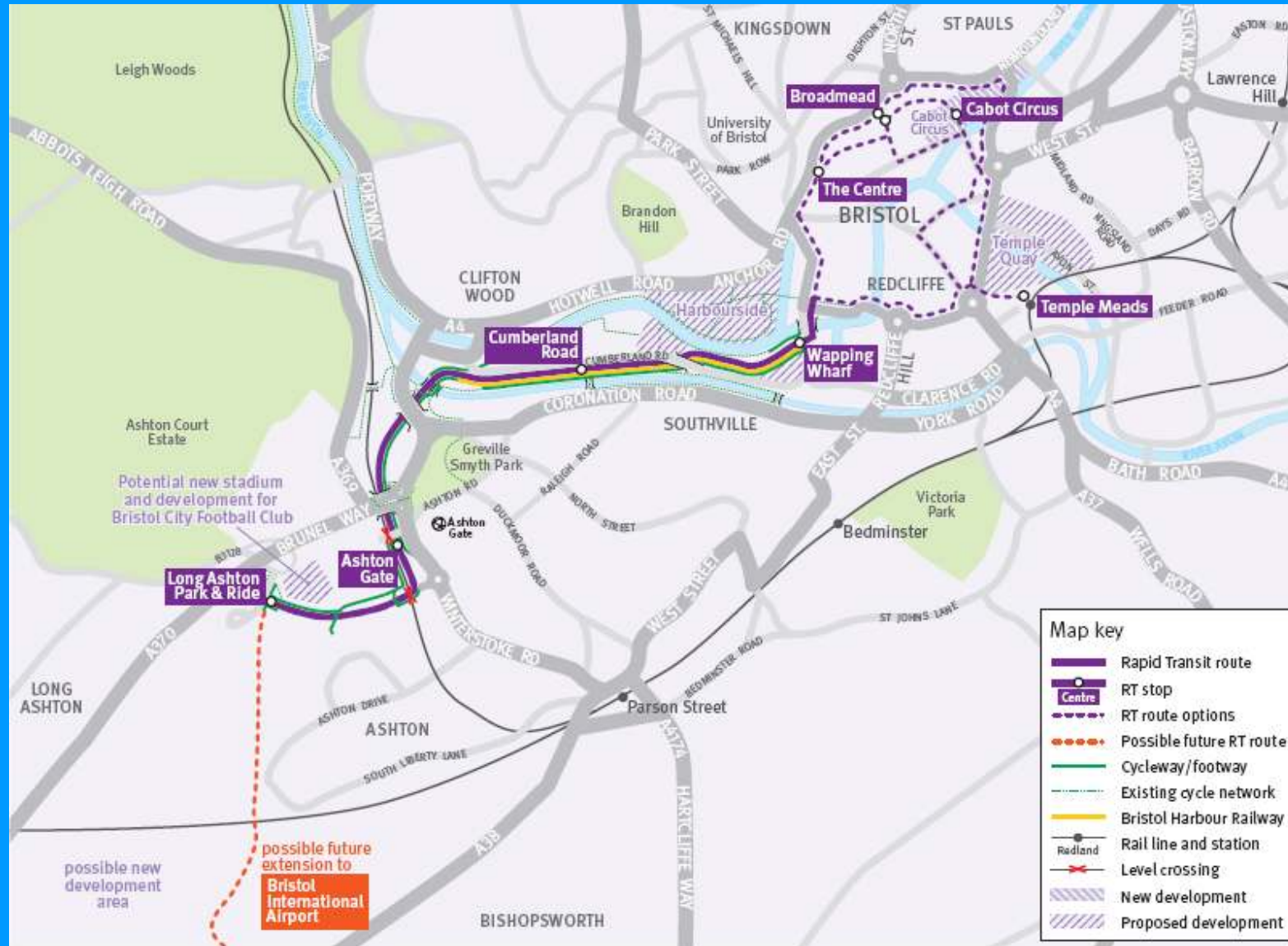
South Bristol Link and Rapid Transit

- ❑ Tackle Congestion
- ❑ Improve Access
- ❑ South Bristol Regeneration
- ❑ Sub-Regional Growth

Rapid Transit

- ❑ Vision for Rapid Transit
 - ❑ Rapid, reliable, high quality
 - ❑ Segregated
 - ❑ Parallel walking & cycle facilities
- ❑ 2 corridors serving S and SW Bristol:
 - ❑ Line 2 Temple Meads–Ashton Vale
 - ❑ Line 3 Hengrove – North Fringe
- ❑ Possible extension to BIA in future

Rapid Transit Ashton Vale to City



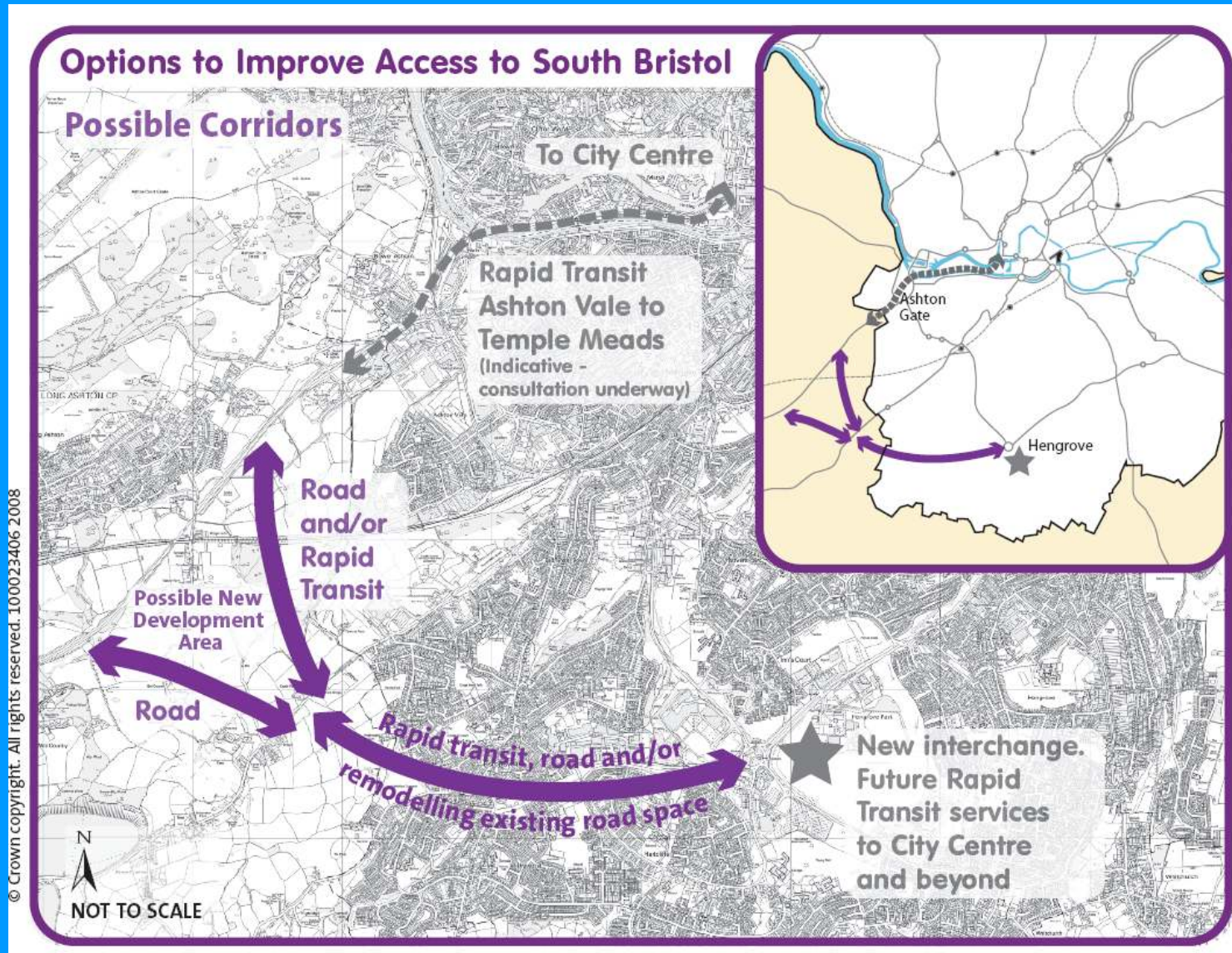
South Bristol Link

- ❑ Project has a long history
 - ❑ GBSTS
 - ❑ Safeguarded routes

- ❑ Route and preferred option not decided

- ❑ Options under consideration:
 - ❑ Single Carriageway Road
 - ❑ Rapid Transit
 - ❑ Traffic management
 - ❑ Combinations
 - ❑ All would include walking and cycling facilities

Rapid Transit Ashton Vale to City



What happens next?

- ❑ Public Engagement – Ongoing
 - ❑ Rapid Transit to Dec'08
 - ❑ South Bristol Link to Jan'09

- ❑ Bid to government for funding
 - ❑ Rapid Transit (AV–City) – early 2009
 - ❑ South Bristol Link – Autumn 2009

- ❑ Construction
 - ❑ RT Line (AV–City) – 2011 to 2013
 - ❑ SBL 2013 to 2015