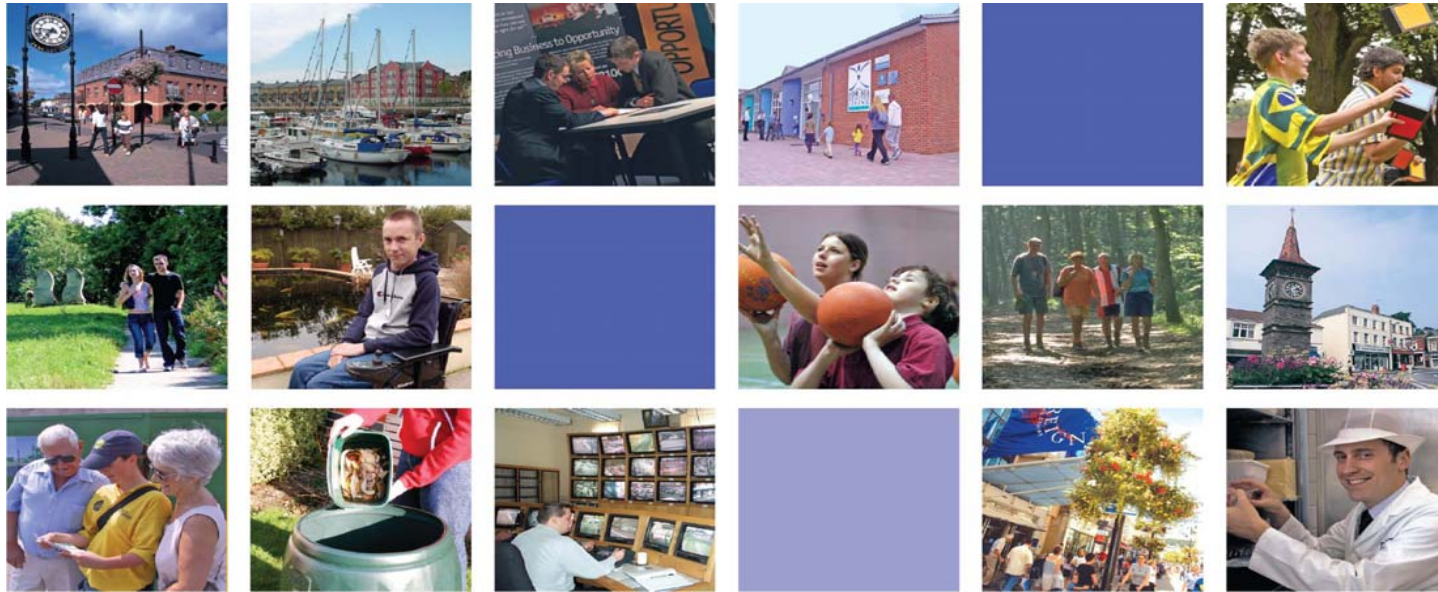


partnership



Improving our communities

Local Area Agreement for North Somerset
2008 - 2011



Priority	Indicator(s), including those from national indicator set (designated targets shown with a *)	Baseline	2008/09 Improvement Target	2009/10 Improvement Target	2010/11 Improvement Target	Lead Partner
Children & Young People	* Emotional health of children (NI 50) (including further improvement to comprehensive CAMHS)	2008/09 66.5%	N/A	70%	71.4%	North Somerset Council Craig Bolt Assistant Director
	* Obesity among primary school age children in Year 6 (NI 56)	2007 13.85%	14.9%	17%	16%	North Somerset Primary Care Trust Dali Sidebottom Service Development Manager
	* Stability of placements of looked after children: number of moves (NI 62)	2006/07 15.8% of looked after children with 3 or more placements during the year.	15%	14%	12%	North Somerset Council Malcolm Lane Performance & Planning Officer
	*Take up of 14-19 learning diplomas (NI 90)	0 as this is a new indicator. Number of active Diploma Aggregation Service accounts where the centre of learning is recorded as being within the local authority	130 0.9%	650 4.3%	1000 6.7%	North Somerset Council Paul Jacobs Head of School Improvement

Priority	Indicator(s), including those from national indicator set (designated targets shown with a *)	Baseline	2008/09 Improvement Target	2009/10 Improvement Target	2010/11 Improvement Target	Lead Partner
Children & Young People	* Participation of 17 years olds in education or training (NI 91)	September 2007 83%	84.5%	86%	88%	North Somerset Council Paul Jacobs Head of School Improvement
	* Under 18 conception rate (NI 112)	2006 22.6 per 1,000 females aged 15-17 years old.	A reduction of 44.1% from 1998 baseline (19.9 per 1,000 females aged 15-17 years old)	A reduction of 50.0% from 1998 baseline (17.8 per 1,000 females aged 15-17 years old)	A reduction of 50.0% from 1998 baseline (17.8 per 1,000 females aged 15-17 years old)	North Somerset Primary Care Trust Dali Sidebottom Service Development Manager
	<i>Achievement of at least 78 points across the Early Years Foundation Stage with at least 6 in each of the scales in Personal Social and Emotional Development & Communication, Language and Literacy</i> (NI 72) (STATUTORY)	2007/08 (academic year 2006/7) 40.7	52.7	54.0		North Somerset Council Paul Jacobs Head of School Improvement
	<i>Achievement at level 4 or above in both English and Maths at Key Stage 2 (Threshold)</i> (NI 73) (STATUTORY)	2007/08 (academic year 2006/7) 75	80	81		North Somerset Council Paul Jacobs Head of School Improvement

Children & Young People

Priority	Indicator(s), including those from national indicator set (designated targets shown with a *)	Baseline	2008/09 Improvement Target	2009/10 Improvement Target	2010/11 Improvement Target	Lead Partner
	<i>Achievement at level 5 or above in both English and Maths at Key Stage 3 (Threshold) (NI 74) (STATUTORY)</i>	2007/08 (academic year 2006/7) 72	80	N/A	N/A	North Somerset Council Paul Jacobs Head of School Improvement
	<i>Achievement of 5 or more A*-C grades at GCSE or equivalent including English and Maths (Threshold) (NI 75) (STATUTORY)</i>	2007/08 (academic year 2006/7) 48.3	55.5	59.7		North Somerset Council Paul Jacobs Head of School Improvement
	<i>Achievement at level 5 or above in Science at Key Stage 3 (NI 83) (STATUTORY)</i>	2007/08 (academic year 2006/7) 77	84	N/A	N/A	North Somerset Council Paul Jacobs Head of School Improvement
	<i>Secondary school persistent absence rate (NI 87) (STATUTORY)</i>	2007/08 (academic year 2006/7) 5.60	5.40	5.40		North Somerset Council Paul Jacobs Head of School Improvement
	<i>Narrowing the gap between the lowest achieving 20% in the Early Years Foundation Stage Profile and the rest (NI 92) (STATUTORY)</i>	2007/08 (academic year 2006/7) 33.6	29.9	29.55		North Somerset Council Paul Jacobs Head of School Improvement

Priority	Indicator(s), including those from national indicator set (designated targets shown with a *)	Baseline	2008/09 Improvement Target	2009/10 Improvement Target	2010/11 Improvement Target	Lead Partner
Children & Young People	<i>Progression by 2 levels in English between Key Stage 1 and Key Stage 2 (NI 93) (STATUTORY)</i>	2007/08 (academic year 2006/7) 85.2	89	88		North Somerset Council Paul Jacobs Head of School Improvement
	<i>Progression by 2 levels in Maths between Key Stage 1 and Key Stage 2 (NI 94) (STATUTORY)</i>	2007/08 (academic year 2006/7) 78.3	86	85		North Somerset Council Paul Jacobs Head of School Improvement
	<i>Progression by 2 levels in English between Key Stage 2 and Key Stage 3 (NI 95) (STATUTORY)</i>	2007/08 (academic year 2006/7) 24.5	38	N/A	N/A	North Somerset Council Paul Jacobs Head of School Improvement
	<i>Progression by 2 levels in Maths between Key Stage 2 and Key Stage 3 (NI 96) (STATUTORY)</i>	2007/08 (academic year 2006/7) 61.6	70	N/A	N/A	North Somerset Council Paul Jacobs Head of School Improvement
	<i>Progression by 2 levels in English between Key Stage 3 and Key Stage 4 (NI 97) (STATUTORY)</i>	2007/08 (academic year 2006/7) 56.8	62.0	N/A	N/A	North Somerset Council Paul Jacobs Head of School Improvement

Priority	Indicator(s), including those from national indicator set (designated targets shown with a *)	Baseline	2008/09 Improvement Target	2009/10 Improvement Target	2010/11 Improvement Target	Lead Partner
Children & Young People	<i>Progression by 2 levels in Maths between Key Stage 3 and Key Stage 4 (NI 98) (STATUTORY)</i>	2007/08 (academic year 2006/7) 28.6	36.5	N/A	N/A	North Somerset Council Paul Jacobs Head of School Improvement
	<i>Children in care reaching level 4 in English at Key Stage 2 (NI 99) (STATUTORY)</i>	2007/08 (academic year 2006/7) 12.5	50	7.0		North Somerset Council Paul Jacobs Head of School Improvement
	<i>Children in care reaching level 4 in Maths at Key Stage 2 (NI 100) (STATUTORY)</i>	2007/08 (academic year 2006/7) 25	63	7.0		North Somerset Council Paul Jacobs Head of School Improvement
	<i>Children in care achieving 5 A*-C GCSEs (or equivalent) at Key Stage 4 (including English and Maths) (NI 101) (STATUTORY)</i>	2007/08 (academic year 2006/7) 8.3	9.1	6.3		North Somerset Council Paul Jacobs Head of School Improvement
	Number of Sure Start Children's Centres (NI 109) (Local target)	67% (10 designated out of 15)	67% (10 designated out of 15)	100% (15 designated out of 15)	100% (15 designated out of 15)	North Somerset Council Jenie Eastman Early years & Childcare manager

Priority	Indicator(s), including those from national indicator set (designated targets shown with a *)	Baseline	2008/09 Improvement Target	2009/10 Improvement Target	2010/11 Improvement Target	Lead Partner
Children & Young People	Percentage of Schools providing access to extended services (NI 88) <i>(Local target)</i>	28%	54%	85%	90%	North Somerset Council Jenie Eastman Early years & Childcare manager
	Young people's participation in positive activities (NI 110) <i>(Local target)</i>	2008/09 70.3%	N/A	72.7%	75.0%	North Somerset Council Craig Bolt Assistant Director
	Substance misuse by young people (NI 115) <i>(Local target)</i>	21% of young people reporting frequent misuse of drugs/volatile substances or alcohol or both.	22%	22%	21%	North Somerset Council Malcolm Lane Performance & Planning Officer
	Young offenders engagement in suitable education, training or employment (NI 45) <i>(Local target)</i>	75.8% of young offenders actively engaged in education, training or employment.	78.8%	82%	85.2%	North Somerset Council Mike Rees Youth Offending Team Manager
	Transport accessibility <i>(Local target)</i>	2008/09 52.5%	N/A	54.8%	57.0%	North Somerset Council Craig Bolt Assistant Director

Children & Young People

Priority	Indicator(s), including those from national indicator set (designated targets shown with a *)	Baseline	2008/09 Improvement Target	2009/10 Improvement Target	2010/11 Improvement Target	Lead Partner
Children & Young People	Reduce the percentage of 16-18 year olds not in education, employment and training. (NEET) (Existing PRG target)	Nov 2006	Without stretch 4.7% (247 young people)	Without stretch 4.5% (241 young people)	Without stretch 4.4% (236 young people)	Connexions Nicola Burcham
			With stretch 4.5% (241 young people)	With stretch 4.3% (227 young people)	With stretch 4.2% (221 young people)	
	Increase the percentage of 16 year -18 year olds achieving 5 A*-C GCSEs, (or equivalent level qualification) including English & Maths (Existing PRG target)	2006 47.3% of 2293 pupils (1,085 pupils)	Without stretch March 2009 49.3% (1,130 pupils)	Without stretch March 2010 50.3% (1,153 pupils)	No target set – existing reward target	North Somerset Council / Learning and Skills Council Paul Jacobs Head of School Improvement
			With stretch March 2009 50.1% (1,149 pupils)	With stretch March 2010 51.75% (1,187 pupils)	No target set – existing reward target	
	Half days missed through absence – Primary aged pupils (Existing PRG target)	2005/06 Baseline 5.53%	Without stretch 4.5% (250,942 half days)	Without stretch 4.4% (245,366 half days)	No target set – existing reward target	North Somerset Council Sara Griffiths Principal Education Welfare Officer
			With stretch 4.3 (239,789 half days)	With stretch 4.2% (234,213 half days)	No target set – existing reward target	

Priority	Indicator(s), including those from national indicator set (designated targets shown with a *)	Baseline	2008/09 Improvement Target	2009/10 Improvement Target	2010/11 Improvement Target	Lead Partner
Children & Young People	Half days missed through absence – Secondary aged pupils (Existing PRG target)	2005/06 Baseline 8.68 %	Without stretch 7.0% (350,295 half days)	Without stretch 6.9% (345,291 half days)	No target set – existing reward target	
			With stretch 6.7% (335,283 half days)	With stretch 6.6% (330,279 half days)	No target set – existing reward target	
	Increase the number of schools validated to the new National Healthy Schools Programme (Existing PRG target)	September 2006 6.25%	Without stretch Sept 08 63.75% (51 schools)	Without stretch March 2010 80% (64 schools)	No target set – existing reward target	North Somerset Council / North Somerset Primary Care Trust Dali Sidebottom Service Development Manager Shaun Cheesman North Somerset Council
			With Stretch Sept 08 72.5% (58 schools)	With Stretch March 2010 94% (75 schools)	No target set – existing reward target	

Economic Development & Environment

Priority	Indicator(s), including those from national indicator set (designated targets shown with a *)	Baseline	2008/09 Improvement Target	2009/10 Improvement Target	2010/11 Improvement Target	Lead Partner
	*Number of affordable homes Delivered (gross) (NI 155)	2007/08 208 affordable housing completions within North Somerset (119 social rented, 89 intermediate/homebuy)	220 Cumulative 220 dwellings (150 social rented/70 intermediate/homebuy) (target on hold for refresh 2009/10)	150 Cumulative 370 dwellings (270 social rented/100 intermediate/homebuy) (target on hold for refresh 2009/10)	150 Cumulative 520 dwellings (390 social rented/130 intermediate/homebuy) (target on hold for refresh 2009/10)	North Somerset Council Michael Reep Planning Policy Manager
	* Net additional homes provided (NI 154)	2007/08 1415	1210 Cumulative 1210 (target on hold for refresh 2009/10)	1220 Cumulative 2430 (target on hold for refresh 2009/10)	1060 Cumulative 3490 (target on hold for refresh 2009/10)	North Somerset Council Michael Reep Planning Policy Manager
	* Supply of ready to develop housing sites (NI 159)	2007/08 6,208 dwellings	100% of the sites currently available	100% of the sites currently available	100% of the sites currently available	North Somerset Council Michael Reep Planning Policy Manager

Economic Development & Environment

Priority	Indicator(s), including those from national indicator set (designated targets shown with a *)	Baseline	2008/09 Improvement Target	2009/10 Improvement Target	2010/11 Improvement Target	Lead Partner
	* Congestion – average time per mile during the morning peak (NI 167)	2005/06 0 sub-regional figure	8 sub-regional figure	11 sub-regional figure	13 sub-regional figure	North Somerset Council Colin Medus Transport Planning Manager
	* Local bus passenger journeys originating in the authority area (NI 177)	2003/04 55,226 sub-regional figure	56,057 sub-regional figure	56,337 sub-regional figure	56,883 sub-regional figure	North Somerset Council Colin Medus Transport Planning Manager
	* Time taken to process Housing Benefit/Council Tax Benefit new claims and change events (NI 181)	21.3 days (Calculated by DWP using quarter 2 data from 2007/08)	16 days	14 days	12 days	North Somerset Council Richard Penska Assistant Director

Priority	Indicator(s), including those from national indicator set (designated targets shown with a *)	Baseline	2008/09 Improvement Target	2009/10 Improvement Target	2010/11 Improvement Target	Lead Partner
Economic Development & Environment	* Adapting to climate change (NI 188)	Level of preparation 0 as this is a new indicator	Level of preparation 1	Level of preparation 2	Level of preparation 3	Environment Agency & North Somerset Council Andy Hicklin Planning & Corporate Services Manager, Environment Agency Simon Gregory Development & Regeneration Team Leader, North Somerset Council
	* Municipal waste land filled (NI 193)	2006/07 66.42%	61.05%	59.33%	52.53%	North Somerset Council Ray Skipp Area Manager Waste Management
	* Reduction in per capita CO2, emissions in LA area (NI 186)	2005 = 6.4 tonnes CO2/capita	4% reduction from baseline	8% cumulative reduction from baseline	Aim to achieve 12.5% cumulative reduction from baseline (to 5.6 tonnes CO2 per capita)	North Somerset Council Karuna Tharmanathar Assistant Director

Priority	Indicator(s), including those from national indicator set (designated targets shown with a *)	Baseline	2008/09 Improvement Target	2009/10 Improvement Target	2010/11 Improvement Target	Lead Partner
Economic Development & Environment	Number of people resident in North Somerset and aged 19 or over (on 31 st July of the year in which results are given) who achieve at least a full first level 2 qualification or equivalent, as measured by the LSC through Individualised Learner Records. (Existing PRG target)	Academic year 2005-06 800 participation (Weston College)	Without stretch 1015	Without stretch 1145	No target set – existing reward target	Learning and Skills Council
			With stretch 1060	With stretch 1220	No target set – existing reward target	Sara Marshall Partnership Manager
	Increase the number of lone parents* and people on inactive benefits** helped by North Somerset Council into sustained employment of at least 16 hours per week for 13 consecutive weeks or more, as measured by partnership data. (Existing PRG target)	2005/06 baseline 45 people off inactive benefit and into sustainable jobs	Without stretch 50	Without stretch 52	No target set – existing reward target	North Somerset Council / JobCentre Plus
			With stretch 80	With stretch 82	No target set – existing reward target	Simon Gregory Economic Development & Regeneration Team Leader

Priority	Indicator(s), including those from national indicator set (designated targets shown with a *)	Baseline	2008/09 Improvement Target	2009/10 Improvement Target	2010/11 Improvement Target	Lead Partner
Adult health & well-being	* All age all cause mortality rate (NI 120)	1995/1997 Male: 862.3 Female: 533.8 (per 1,000 population)	Male:585 Female: 435 (per 1,000 population)	Male:567 Female: 426 (per 1,000 population)	Male:549 Female: 418 (per 1,000 population)	North Somerset Primary Care Trust Mary Hart Head of Health Improvement
	* Achieving independence for older people through rehabilitation/ intermediate care (NI 125) (Information for 07/08 on service users readmitted to hospital or going into care during their actual period of intermediate care service. Rate is about 10.5% in N Somerset but awaiting actual baseline data.)	Awaiting baseline data			+ 1.5% improvement on the baseline	North Somerset Council & North Somerset Primary Care Trust Paul Slade Assistant Director (Adult Care) Mary Hart Head of Health Improvement
	* The number of emergency bed days per head of weighted population (NI 134)	2006/07 127,544 days	126,603 days	125,970 days	125,340 days	North Somerset Primary Care Trust Mary Hart Head of Health Improvement

Priority	Indicator(s), including those from national indicator set (designated targets shown with a *)	Baseline	2008/09 Improvement Target	2009/10 Improvement Target	2010/11 Improvement Target	Lead Partner
Adult health & well-being	*Carers receiving needs assessment or review and a specific carers service (NI 135)	2007/08 29% of carers	32% of carers	35% of carers	38% of carers	North Somerset Council Paul Slade Assistant Director
	* People supported to live independently through social services (all ages) (NI 136)	2007/08 3152 per 100,000 population assisted directly through social services to live independently	3220	3485	3750	North Somerset Council Paul Slade Assistant Director (Adult Care)
	* Adults in contact with secondary mental health services in employment (NI 150)	Establish later in 2009	North Somerset commits to a statistically significant improvement calculated in accordance with the Target Negotiation Brief on data for year 2008/09 as the target for 2010/11 for indicator NI 150. The final target will be confirmed once the data for year 2008/09 is available			North Somerset Council Paul Slade Assistant Director (Adult Care)
	Percentage of vulnerable people achieving independent living (NI 141) (Local target)	2007/08 64%			72%	North Somerset Council Shaun Fitzpatrick Supporting People Manager

Adult health & well-being

Priority	Indicator(s), including those from national indicator set (designated targets shown with a *)	Baseline	2008/09 Improvement Target	2009/10 Improvement Target	2010/11 Improvement Target	Lead Partner
Adult health & well-being	End of life access to palliative care enabling people to choose to die at home (NI 129) <i>(Local target)</i> Proportion of deaths at home registered within calendar year:	2006 17.96%	18.0%	18.50%	20.26%	North Somerset Primary Care Trust Mary Hart Head of Health Improvement
	Reduce the absolute gap in all age all cause mortality between the most deprived quintile and least deprived quintile in North Somerset to the 2000-2002 levels. <i>(Local target)</i>	2004 - 06 225 (difference in number of people)	2007-09 217	2008-10 209	2009-11 200	North Somerset Primary Care Trust Mary Hart Head of Health Improvement
	Increase the proportion of adults in the general population of North Somerset achieving at least 30 minutes of moderate physical activity at least three times a week. (Existing PRG target)	2006 Sport England Active People Survey 34,300 active adults (21.6%)	Without stretch 34,300 active adults (21.6%)	Without stretch 34,300 active adults (21.6%)	No target set – existing reward target	North Somerset Council / North Somerset Primary Care Trust David Lawrence Assistant Director / Mary Hart Head of Health Improvement
		With stretch N/a	With stretch 40,653 active adults (25.6%) (4% increase on baseline) (+6,353)	No target set – existing reward target		

Priority	Indicator(s), including those from national indicator set (designated targets shown with a *)	Baseline	2008/09 Improvement Target	2009/10 Improvement Target	2010/11 Improvement Target	Lead Partner
Adult health & well-being	Increase the number of recorded obese individuals losing weight through a personalised weight management programme. (Existing PRG target)	Baseline 0 (2005-06)	Without stretch 0	Without stretch 0	No target set – existing reward target	North Somerset Primary Care Trust Mary Hart Head of Health Improvement
		Target is 80 people achieving a reduction in body weight of 5%+ and /or 5kg at 6 months	With stretch N/a	With stretch 80	No target set – existing reward target	
	Increase the number of adults (18-64) and older people (65+) including carers with self-directed support packages (Existing PRG target)	March 2006	Without stretch	Without stretch	No target set – existing reward target	North Somerset Council Margaret Newman Development & Planning Manager
		Direct Payments 104 people (7.28%)	Combined target 11.25%	Combined target 12.4%		
	Individual Budgets 0 people	With stretch Combined target 15%	With stretch Combined target 20%	No target set – existing reward target		

Priority	Indicator(s), including those from national indicator set (designated targets shown with a *)	Baseline	2008/09 Improvement Target	2009/10 Improvement Target	2010/11 Improvement Target	Lead Partner
Adult health & well-being	Increase the number of four week quitters through the local NHS Support to Stop Smoking Services from the 20% most deprived areas in North Somerset. (Existing PRG target)	Baseline 1092	Without stretch 1092	Without stretch 1092	No target set – existing reward target	North Somerset Primary Care Trust Mary Hart Head of Health Improvement
			With stretch N/a	With stretch 1262 (cumulative 2007 - 2010)	No target set – existing reward target	
	Increase the number of four week quitters through the local NHS Support to Stop Smoking Services from staff and users of mental health services identified either by inclusion in the GP register of those suffering from severe & enduring mental health problems or accessed through mental health user groups. (Existing PRG target)	Baseline 0	Without stretch N/a	Without stretch 0	No target set – existing reward target	
			With stretch N/a	With stretch 30 (cumulative 2007 – 2010)	No target set – existing reward target	

Priority	Indicator(s), including those from national indicator set (designated targets shown with a *)	Baseline	2008/09 Improvement Target	2009/10 Improvement Target	2010/11 Improvement Target	Lead Partner
Safer & Stronger Communities	<p>* Serious acquisitive crime rate (NI 16) N.B: A reduction in recorded SAC from a rate of 10.99 crimes per 1,000 population in 2007/08 based on mid-2006 population estimates (2214 offences) to a rate of 10.44 crimes per 1,000 population in 2010/11 based on mid-2009 population estimates, equivalent to a reduction of 5%</p>	<p>2007/08 2,214 (10.99 per 1,000 population)</p>	<p>2,176 (10.81 per 1,000 population) (-1.6% reduction)</p>	<p>2,139 (10.64 per 1,000 population) (-3.2% cumulative reduction)</p>	<p>2,103 (10.44 per 1,000 population) (-5% cumulative reduction)</p>	<p>Avon & Somerset Constabulary Stephen Baggs Performance Analyst</p>
	<p>* Assault with injury crime rate (NI 20)</p>	<p>2007/08 1442 crimes 7.16 crimes per 1,000 population</p>	<p>1392 crimes 6.91 crimes per 1,000 population (-3.33%) (cumulative)</p>	<p>1344 crimes 6.67 crimes per 1,000 population (-6.66%) (cumulative)</p>	<p>1298 crimes 6.44 crimes per 1,000 population (-10%) (cumulative)</p>	<p>Avon & Somerset Constabulary Stephen Baggs Performance Analyst</p>

Priority	Indicator(s), including those from national indicator set (designated targets shown with a *)	Baseline	2008/09 Improvement Target	2009/10 Improvement Target	2010/11 Improvement Target	Lead Partner
Safer & Stronger Communities	*Dealing with local concerns about anti-social behaviour and crime by the local council and police (NI 21)	2008/09 25.4%	N/A		+ 7% (32.4%) (on the final confirmed data from the audit commission)	North Somerset Council Jo Mercer Community Safety & Drug Action Team
	* Re-offending rate of prolific and priority offenders (NI 30)	22% The performance ceiling from J-TRACK as at 30/09/08			23% based on a ratio of 1.05	Crime & Disorder Reduction Partnership Kay Wozniak District Commander, Avon & Somerset Constabulary
	* Drug users in effective treatment (NI 40)	2007/08 616	641 (4% increase on baseline)	667 (4% increase on previous years target)	694 (4% increase on previous years target)	North Somerset Council Jo Mercer Community Safety & Drug Action Team Manager
	Alcohol-harm related hospital admission rates (NI 39) (Local target)	1499 per 100,000 population	1605 per 100,000 population	1914 per 100,000 population	2039 per 100,000 population	North Somerset Primary Care Trust Mary Hart Head of Health Improvement

Priority	Indicator(s), including those from national indicator set (designated targets shown with a *)	Baseline	2008/09 Improvement Target	2009/10 Improvement Target	2010/11 Improvement Target	Lead Partner
Safer & Stronger Communities	* Percentage of people who feel they can influence decisions in their locality within South Ward, Weston-super-Mare. (NI 4) (Local target)	2006 17.7			+3% (20.7%)	North Somerset Council Sara Brown South Ward Neighbourhood Manager
	* Overall/general satisfaction with local area within South Ward, Weston-super-Mare. (NI 5) (Local target)	2006 48.4			+3% (51.4%)	North Somerset Council Sara Brown South Ward Neighbourhood Manager
	Repeat incidents of domestic violence (NI 32) (Local target) For cases which have been to a MARAC in the previous 12 months and where a repeat is an incident recorded as a crime by the police	2007/08 22.6%	21.6%	20.6%	20%	North Somerset Council Jo Mercer Community Safety & Drug Action Team Manager Louise Branch Domestic Abuse Co- ordinator
	Increase the number of incidents of domestic violence reported annually to the Police. (Existing PRG target)	Baseline year 2005/06 891	Without stretch 935 (+5%)	Without stretch 980 (+10%)	No target set – existing reward target	North Somerset Council / Avon & Somerset Constabulary

Priority	Indicator(s), including those from national indicator set (designated targets shown with a *)	Baseline	2008/09 Improvement Target	2009/10 Improvement Target	2010/11 Improvement Target	Lead Partner
Safer & Stronger Communities			With Stretch 980 (+10%)	With Stretch 1042 (+17%)	No target set – existing reward target	
	Reduce the proportion of repeat incidents of domestic violence in the total number of incidents reported to the Police. (Existing PRG target)	Baseline year 2005/06 293 repeats out of 891 crimes = 32.9% repeat victimisation rate	Without stretch 31.8% (283 repeats)	Without stretch 30.8% (274 repeats)	No target set – existing reward target	North Somerset Council / Avon & Somerset Constabulary
			With Stretch 30.8% (274 repeats)	With Stretch 28.8% (257 repeats)	No target set – existing reward target	Jo Mercer Community Safety & Drug Action Team Manager
	Increase the number of people recorded as or reporting that they have engaged in formal volunteering on an average of at least two hours per week over the last year (Existing PRG target)	(2007) 10.84%	Without stretch Baseline + 0%	Without stretch Baseline + 0%	No target set – existing reward target	Voluntary Action North Somerset (VANS) / North Somerset Council
			With stretch Baseline + 2% (cumulative)	With stretch Baseline + 4% (cumulative)	No target set – existing reward target	Bob Snow Chief Executive VANS

Priority	Indicator(s), including those from national indicator set (designated targets shown with a *)	Baseline	2008/09 Improvement Target	2009/10 Improvement Target	2010/11 Improvement Target	Lead Partner
Safer & Stronger Communities	Reduction in recorded criminal damage offences (Existing PRG target)	Baseline 2005/6 3,666 offences	Without stretch	Without stretch	No target set – existing reward target	Avon & Somerset Constabulary Stephen Baggs Performance Analyst
		Projected 2006/07 without stretch 3,483 offences with stretch 3,299 offences	3,143 offences (-5%)	2,986 offences (-5%)		
	Reduce drug-related deaths by 1 deaths by 2010 (using 2003 – 2006 aggregated baseline) (Existing PRG target)	Baseline: 27 deaths reported as drug related between 2003 and 2006	Without stretch	Without stretch	No target set – existing reward target	North Somerset Council Jo Mercer Community Safety & Drug Action Team Manager
			With Stretch N/a	With Stretch reduction of 1 drug related death between 2007-2010: (26 deaths)	No target set – existing reward target	

Note: Indicators in *'italics'* are statutory DCSF education and early years targets
Indicators marked with an asterisk (*) are designated targets. All other indicators are local indicators including existing 2007 – 2010 reward targets