

Weston-super-Mare Seafront Enhancements

The Seafront Enhancement project in Weston-super-Mare is upgrading the resort's sea wall between Marine Lake and Royal Sands and giving the promenade a fresh new look.

The previous sea defences were not adequate and the scheme will give a major boost to tourism and businesses in the area as well as protecting 4,500 properties from sea-water flooding.

£29 million is being invested from Defra's Flood Defence Grant in Aid, from the South West Regional Development Agency's Civic Pride initiative, from the Wessex Regional Flood Defence Committee and the Joint Local Transport Plan.

North Somerset Council is working with Royal Haskoning, specialist coastal engineers, to design the works, EC Harris to oversee the project and Birse Coastal (part of the Balfour Beatty group) to construct the scheme. The Environment Agency is advising at all stages.

Internationally renowned sculptor, John Maine RA (Royal Academy), is designing public art, which includes natural and sculpted stone, that will be a feature of the new promenade.



In addition the council has been awarded £960,000 through the Government and the Commission for Architecture and the Built Environment's Sea Change initiative to create a series of cultural projects to compliment the seafront enhancements.

For more information

- Call in to the information centre on the seafront
- Log on to www.n-somerset.gov.uk/seafront
- Call Birse's Public Liaison Officer on **07976 539 684** or **01934 425 616**

Information about council services is available in large print, audio, easy read and other formats.

Help is available for people who require council information in languages other than English.

Contact 01934 638 333



18201 06/09

Seafront enhancements

Weston-super-Mare Seafront Enhancements

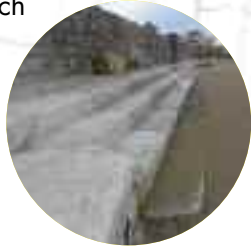


Completed work – Phase 1: Marine Lake

Marine Lake is a tidal lake with its own beach. The beach, causeway and sluice gates have been refurbished making it an ideal venue for families to paddle, sunbathe, enjoy an ice cream or take a stroll around the improved accessible walkway. Visitors can often find entertainment and rides at the lake.

Completed work – Phase 2: Installation of the scour protection apron (toe of the wall)

A 'toe' has been installed on the beach side of the sea wall between Knightstone Island and the Grand Pier. It is an integral part of the sea defences but also provides some attractive beach seating.



Phase 3: Splash wall, street furniture, roads and promenade

In this last phase the sea wall is being strengthened and a splash wall built between the promenade and road.

The roads and drainage are being improved, and the promenade will be transformed with new seating, litter bins, lighting and surfacing.

The splash wall will protect the town from flooding as well as providing extra seating. More crossing points will be built on the busy seafront road for pedestrians.



Key dates

This is a large project and the money has to be spent within a deadline so the project team has to work throughout the year to get everything finished.

The team is working hard to keep disruption to holidaymakers, residents and businesses to a minimum.

- **Phase 1 and 2 completed**
- **Phase 3**, began in September 2008 with drainage improvements and the construction of the splash wall between the Grand Pier and Marine Lake.
- Starting in the summer of 2009 the sea wall will be repaired and the paving of the promenade will begin.
- During the autumn and winter works on the road and promenade will continue together with a further length of splash wall south of the Pier and works to improve the Beach Lawns.
- The project will be completed in 2010.



Artist impression – John Maine